

**PROTECT & RESPECT
LIZARDS**

**WESTERN
FENCE LIZARD**



**SOUTHERN
ALLIGATOR LIZARD**



**WESTERN
SKINK**



**BLAINVILLE'S
HORNED LIZARD**



**CALIFORNIA
WHIPTAIL**





WESTERN FENCE LIZARD

Description: Brownish grey or black body with blotchy markings. Males have blue markings on their bellies (females sometimes have faint blue markings, but not always).

Size: 5 - 8 inches long (including tail).

Diet: Mostly small invertebrates (crickets, spiders, ticks, scorpions, etc.); occasionally small lizards, including its own species.

Fun fact: Western fence lizard blood contains a protein that kills the bacteria in ticks that causes Lyme disease.

SOUTHERN ALLIGATOR LIZARD

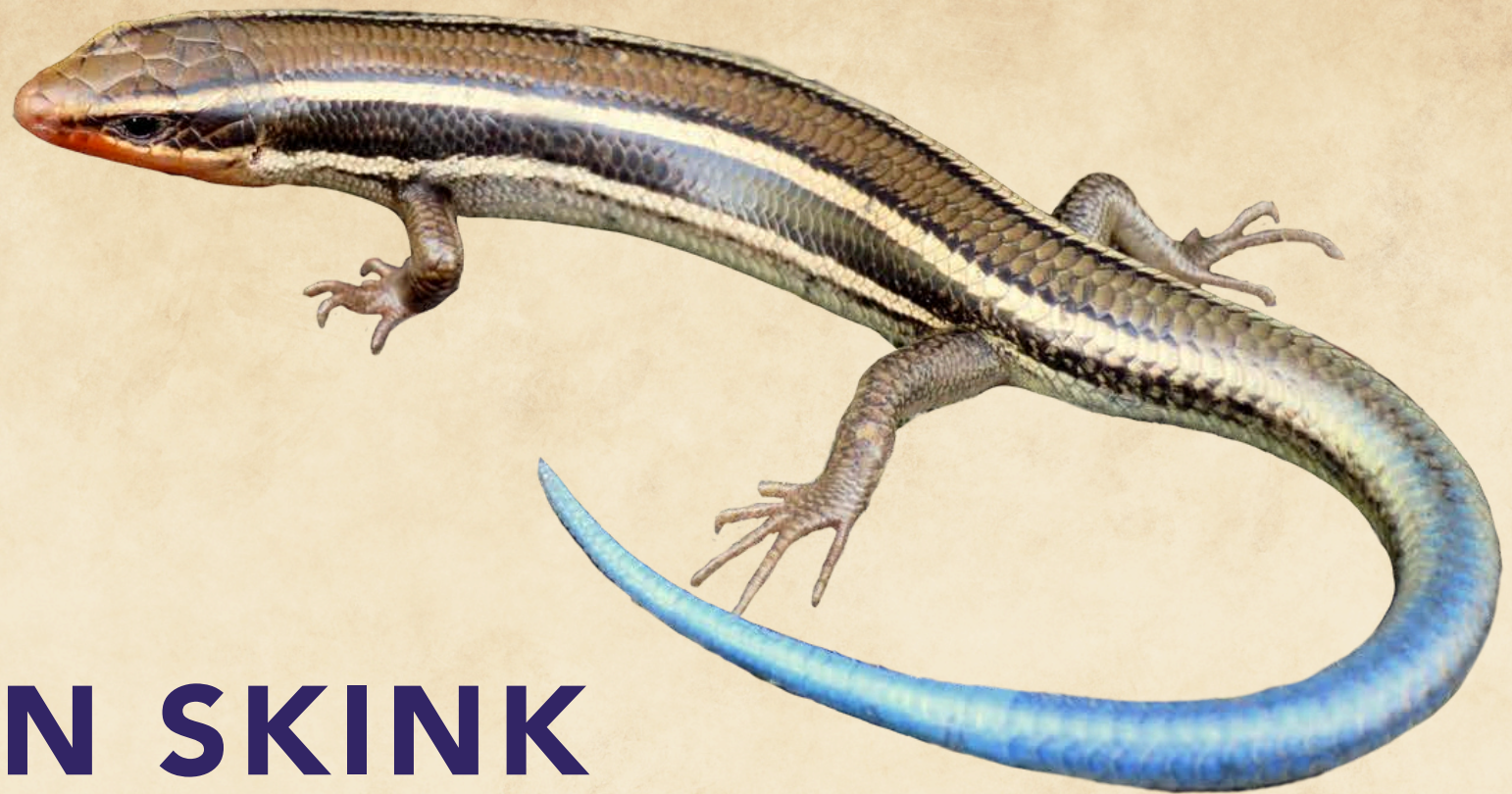
Description: Thick, elongated body with bony scales, short legs, and a large head with a powerful jaw.

Size: 8 - 16 inches long (including tail).

Diet: Mostly invertebrates; occasionally small mammals, other lizards, young birds, and bird eggs.

Fun fact: Unlike other lizards, alligator lizards do not typically bask out in the open and instead prefer sunny spots with nearby cover.





WESTERN SKINK

Description: Smooth, shiny body with alternating dark and light stripes running from the head down the length of the body. Juveniles have bright blue tails, which fade with age.

Size: 4 - 8 inches long (including tail).

Diet: Mostly small invertebrates (crickets, beetles, worms, etc.).

Fun fact: Western skinks are good burrowers that can quickly construct burrows several times their own body length.



CALIFORNIA WHIPTAIL

Description: Slim body with long, slender tail and pointed snout. Tan, gray, or brown back and sides with dark spots or mottled markings.

Size: 8 - 12 inches long (including tail).

Diet: Small invertebrates (spiders, scorpions, centipedes, termites, etc.) and small lizards.

Fun fact: The tail of a California whiptail can reach up to two times the length of the body.

BLAINVILLE'S HORNED LIZARD



Description: Flat, oval-shaped body, with pointed scales on the upper body and tail and a large crown of horns or spines on the head.

Size: 4 - 8 inches long (including tail).

Diet: Mostly ants; also other small invertebrates (spiders, beetles, termites, flies, grasshoppers, etc.).

Fun fact: This lizard inflates with air when threatened, making it larger and hard to swallow. As a last resort, it can spray intruders with blood from the corners of its eyes.