

PROTECT & RESPECT
MOTHS



**ACHEMON
SPHINX
MOTH**

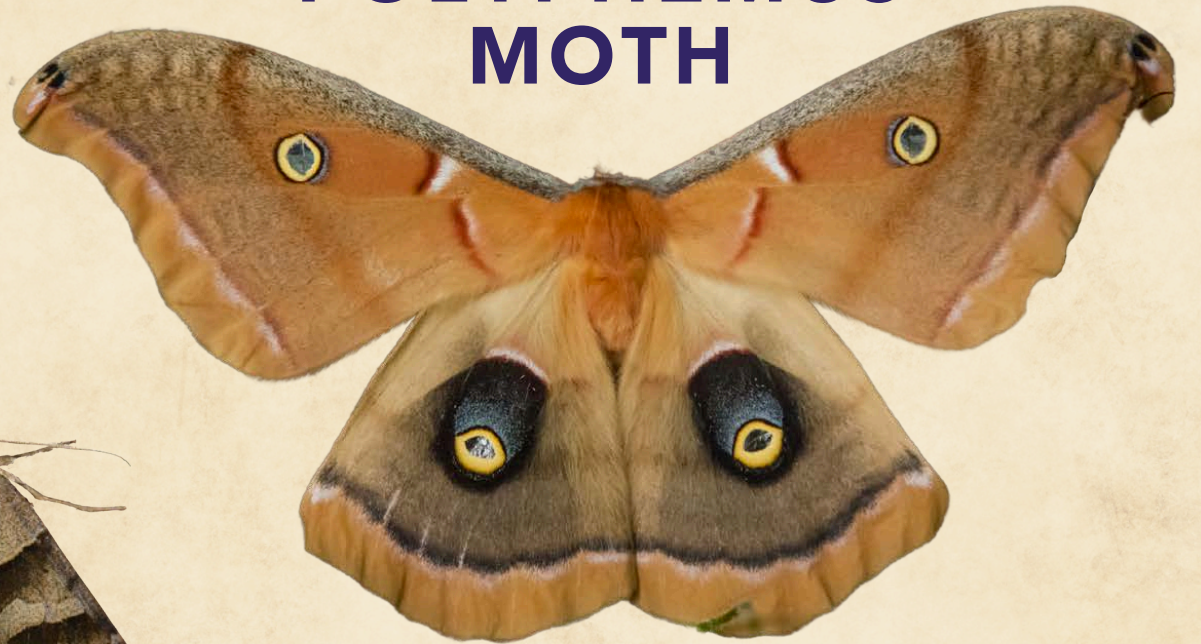
**WHITE-LINED
SPHINX MOTH**



**CALIFORNIA
OAK MOTH**



**POLYPHEMUS
MOTH**



**FORAGE
LOOPER
MOTH**



**AMERICAN
DUN-BAR MOTH**



**FOREST TENT
CATERPILLAR MOTH**



**CABBAGE
LOOPER MOTH**



ACHEMON SPHINX MOTH

*Eumorpha
achemon*



Description: Pinkish brown wings with black squares near the body of the moth and the tips of the wings.

Wingspan: 8.7 - 9.6 cm (3.4 - 3.8 in)

Diet: Flower nectar from Japanese honeysuckle, petunia, and mock orange.

Flight times: Night.

Fun fact: Sphinx moths have incredible color vision, which allows them to distinguish flower colors in the dark of night.



WHITE-LINED SPHINX MOTH

Hyles lineata

Description: Dark brown forewings with lighter brown borders, a tan stripe running through the center, and white lines on the veins. Hindwings are blackish brown with a pink stripe.

Wingspan: 6.3 - 9 cm (2.5 - 3.5 in)

Diet: Nectar from flowers, including columbines, honeysuckle, and clover.

Flight times: Dusk, dawn, night, and day.

Fun fact: This moth eats by hovering over flowers and sipping nectar with its long proboscis, much like a hummingbird.

CALIFORNIA OAK MOTH

*Phryganidia
californica*



Description: Tan or silvery-gray wings with distinct, prominent veins.

Wingspan: 2.5 - 3.5 cm (1 - 1.4 in)

Diet: Adults do not feed.

Flight times: Daytime.

Fun fact: As California oak caterpillars are maturing, they often slip off of their oak trees and land on the sidewalk, cars, and even people! They're not harmful; they just want to be able to climb back up the tree to continue maturing into moths.

Antheraea polyphemus

POLYPHEMUS MOTH



Description: Reddish brown wings with brown borders separated by black and white stripes. Eye-like oval shapes in yellow with black and blue rings on each of the forewings and hindwings.

Wingspan: 10 - 15 cm (3.9 - 5.9 in)

Diet: Adults do not eat.

Flight times: Dusk and night.

Fun fact: This moth is named after Polyphemus, the Cyclops in Homer's "The Odyssey."



FORAGE LOOPER

*Caenurgina
erechtea*

Description: Brown wings with black and lighter brown bands.

Wingspan: 3.2 - 4 cm (1.3 - 1.6 in)

Diet: Grasses, clover, and ragweed.

Flight times: Day and night.

Fun fact: These moths are so similar to another species, the clover looper (*Caenurgina crassiuscula*), that they cannot be reliably distinguished in photos.

FOREST TENT CATERPILLAR MOTH

*Malacosoma
disstria*



Description: Tan wings with a dark brown band stretching across the center of both forewings.

Wingspan: 2.5 - 3.8 cm (1 - 1.5 in)

Diet: Caterpillars eat aspen and other deciduous trees; adults do not feed.

Flight times: Night (after twilight for females).

Fun fact: When the larva of this moth hatch in the spring, they are so plentiful that they can eat the entire foliage of a tree.

AMERICAN DUN-BAR MOTH

*Cosmia
calami*



Description: Light brown or cream-colored wings with a darker brown band across the center of the forewings. Three black dots in the band on each wing.

Wingspan: 2.8 - 3.8 cm (1.1 - 1.5 in)

Diet: Caterpillars feed on other caterpillars, maple, birch, and elm.

Flight times: Night.

Fun fact: Caterpillars of this species are known for their tendency to eat other species' caterpillars.



CABBAGE LOOPER

Trichoplusia ni

Description: Mottled brownish or gray wings with a silvery marking resembling a "U" or figure eight on each front wing.

Wingspan: 3.3 - 3.8 cm (1.3 - 1.5 in)

Diet: Nectar from clover, goldenrod, sunflowers, and others. Caterpillars eat cole crops and are a significant agricultural pest.

Flight times: Night.

Fun fact: Looper moths are named for the "looping", crawling movement of their caterpillars.