

FISCAL YEAR 2024/2025

ANNUAL EXPENDITURE PLAN STATUS REPORT

A REVIEW OF MEASURE Q AND T
REVENUES AND EXPENDITURES



**Santa Clara Valley
Open Space Authority**
Published December 11, 2025



Report Design and Layout

Justina Tien
Fiscal Services Officer

Report Development and Contribution

Andrea Mackenzie, General Manager
Lea Rauscher, Assistant General Manager
Marc Landgraf, Assistant General Manager
Aaron Hébert, Natural Resources Manager
Charlotte Graham, Public Information Manager
Derek Neumann, Field Operations Manager
Elizabeth Loretto, Administrative Operations Manager
Lucas Shellhammer, Planning, Design & Construction Manager
Megan Dreger, Conservation & Strategic Partnerships Manager
Nick Perry, Long-Range Planning Manager



ALEX KENNETT

Director, District 1

MARGIE MATTHEWS,

Director, District 2

HELEN CHAPMAN

Chairperson, District 3

KATHY SUTHERLAND

Director, District 4

VICKI ALEXANDER

Vice Chairperson, District 5

LISANNA DOMINGUEZ

Director, District 6

DR. KALVIN GILL

Director, District 7

ANDREA MACKENZIE

General Manager

SCI CONSULTING GROUP

Parcel Tax Administrator

The Open Space Authority conserves the natural environment, supports agriculture and connects people to nature, by protecting open spaces, natural areas, and working farms and ranches for future generations.





Contents

About the Parcel Taxes	3
Annual Expenditure Plan Status Report.....	3
FY 2023/2024 EPOC Oversight Report.....	3
Annual Budget and Work Plan Development for the Parcel Tax Funds	7
Financial Summary for Fiscal Year 2024/2025	8
Revenues	8
Expenditures.....	8
Parcel Tax Funded Programs and Projects.....	15
Expenditure Plan Categories	15
Status and Expenditures by Project	26
How to Read the Project Status Pages	28
EXPENDITURE PLAN CATEGORY #1	29
EXPENDITURE PLAN CATEGORY #2	41
EXPENDITURE PLAN CATEGORY #3	51
Grant Program Funded by Measure Q and Measure T	93
Urban Grant Program Guidelines	94
Grant Disbursements and Balances as of June 30, 2025	95
Expenditure Plan Oversight Committee Costs	99
Administrative Costs	99
Index of Projects Funded by Measure Q and Measure T in Fiscal Year 2024/2025	i
Authority Board of Directors’ Response to EPOC Oversight Report Recommendations for Fiscal Year 2023/2024	iv
The Open Space, Wildlife Habitat, Clean Water and Increased Public Access Expenditure Plan.....	vi
2020 Expenditure Plan The Open Space, Wildlife Habitat, Clean Water and Increased Public Access Measure Expenditure Plan	xiv

(for printing purposes – this page intentionally left blank)



Caring for the Places You Love

So Nature Can Care for You.

(for printing purposes – this page intentionally left blank)

About the Parcel Taxes

Since its creation in 1993, the Authority has protected over 30,000 acres of open space and natural areas, preserving the natural beauty and health of the area, and protecting the region's agriculture, water resources, air quality, wildlife and scenic views for residents today and future generations. As the region continues to grow, protecting hillsides and open spaces become increasingly important to the community.

In November 2014, voters approved the Open Space, Wildlife Habitat, Clean Water, and Increased Public Access Measure (Measure Q), authorizing the Authority to levy a tax of \$24 per parcel annually for 15 years. The tax generates an estimated \$7,883,760 per year in revenue for the Authority to continue protecting and preserving new open space and agricultural areas, protecting and restoring natural areas that buffer our rivers, lakes, and streams, maintaining existing Open Space Preserves, constructing new trails and infrastructure on the Preserves, and increasing the number of environmental education experiences.

In 2020, Measure T, which renews Measure Q, was passed by 81% of the voters to secure funding for the Authority to continue protecting open spaces for future generations. The renewed measure commits to investing in nature in communities and providing Santa Clara Valley residents with more equitable access to nature while stewarding beautiful open spaces forever.

Annual Expenditure Plan Status Report

In order to ensure accountability, transparency and public oversight of all funds collected and allocated under Measure Q and in compliance with Government Code Sections 50075.1(d) and 50075.3, an annual report is provided to the Authority's Board of Directors on or before January 1 of each fiscal year. The purpose of the report is to explain (1) the amount of funds collected and expended under Measure Q and Measure T and (2) the status of the projects authorized to be funded by Measure Q and Measure T.

The Authority's fiscal year begins on July 1 and ends on June 30 of each year. The financial data summarized in the report is derived from the annual independent audit. The project status information is a compilation of the projects conducted in the same fiscal year. The *Expenditure Plan Status Report* is prepared by Open Space Authority staff and submitted to the Authority's Board of Directors.

The [Expenditure Plan Oversight Committee](#) (EPOC), appointed by the Board pursuant to the Expenditure Plan, also receives a copy of the *Status Report* as an informational item. The Committee reviews the *Status Report* alongside the independent financial audit to provide an independent review of all revenues and expenditures of Measure Q and Measure T Funds and submits an oversight report with their recommendations to the Board.

FY 2023/2024 EPOC Oversight Report

In July 2025, the EPOC presented the [Annual Expenditure Plan Oversight Committee Oversight Report for FY 2023/2024](#) to the Authority's Board of Directors. Their report summarized the findings of the EPOC and provided recommendations regarding the reporting of revenues and expenditures of Measure Q and Measure T for the 2023/2024 fiscal year.

On September 25, 2025, the Board reviewed and considered each recommendation set forth by the Committee and discussed the responses recommended by staff.

To see the complete response to the *Annual EPOC Oversight Report*, please refer to [Appendix B](#).

(for printing purposes – this page intentionally left blank)



REVENUES AND EXPENDITURES SUMMARY

(for printing purposes – this page intentionally left blank)

Annual Budget and Work Plan Development for the Parcel Tax Funds

The [Measure Q](#) and [Measure T](#) *Expenditure Plans* provide guidance to the Authority on the use of the parcel tax funds.

During the annual budget and work plan development process, staff proposes projects in service of the Authority’s mission which are aligned with the major project areas stated in the *Expenditure Plans*. Proposed projects are presented to the Authority’s Board during a publicly-noticed Board Workshop, where the Board reviews and discusses the projects and provides staff with clear direction on building a balanced and sustainable budget to support and deliver on the proposed projects.

The Administration and Budget Committee reviews and discusses the proposed budget in detail and staff then brings the proposed budget, along with any changes and recommendations, to the Board for approval. The Board reviews and approves the proposed budget and work plan in a publicly noticed meeting. The resulting *Budget and Annual Work Plan* becomes the guiding document for staff to record and track expenditures for approved projects and goals.

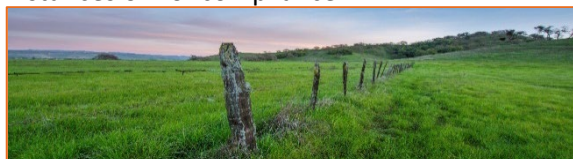
Through this well-established process, the Board provides direction and approval on the budget and work plan consistent with the Authority’s mission and *Expenditure Plans*, reviews quarterly reports of expenditures recorded, and receives the annual financial audit as presented by an independent auditor. The checks and balances put into place through this process also foster strong internal accounting controls to ensure revenues are used in the most effective and efficient manner possible, consistent with serving the public interest and in accordance with existing law and the *Expenditure Plans*.

Annual Independent Financial Audit

As required by the *Expenditure Plans*, an annual independent audit must be conducted to ensure the revenues received and expended by the Authority conforms to the guidelines stated in the Plans.

The independent financial audits for the Measure Q and Measure T funds are currently performed by Moss, Levy & Hartzheim, LLP. During the course of an audit, the independent auditor reviews sufficient and appropriate audit evidence to provide a basis for their opinion. The process includes a comprehensive review of all parcel tax revenues and expenditures as well as an evaluation of the internal controls and appropriateness of accounting policies used. The auditor also reviews and compares the actual revenues and expenditures to the original budget to ensure the Authority remained in compliance with the Board-approved budget.

Moss, Levy & Hartzheim, LLP obtained reasonable assurance that the Authority’s financial statements are free from material misstatement and internal controls present no material weaknesses. The audit of the parcel tax funds for fiscal year 2024/2025 disclosed no instances of noncompliance.



Major Project Areas Identified in the *Expenditure Plans*

- Preservation: Land Acquisition & Conservation Easements
- Public Access and Amenities: Construction & Capital Projects
- Environmental Education, Activities and Outreach
- Land and Agency Operations & Maintenance
- Natural Resource Management
- Urban Grant Program

Financial Summary for Fiscal Year 2024/2025

The following tables provide a summary of the financial information as presented in the Authority's independent financial audit conducted by Moss, Levy & Hartzheim, LLP for the fiscal year ended June 30, 2025. The complete audit can be found on the Authority's [website](#).

Revenues

As determined by SCI Consulting Group, the Authority's parcel tax administrator, the Authority collected \$8,038,260 in gross parcel tax levies from Measure T. The Santa Clara County Assessor's Office collects one percent (1%) of the gross revenue as a fee. As summarized in the financial audit, the Authority received and recorded a total of \$7.96 million in net parcel tax revenues in fiscal year 2024/2025.

Table 1: Parcel Tax Revenues	Measure Q	Measure T
Gross Parcel Tax Levies	-	\$8,038,260
SCC Assessor's Fee (1%)	-	(\$80,381)
TOTAL NET REVENUES	-	\$7,957,879

Expenditures

On June 13, 2024, the Authority's Board of Directors approved the annual budget for the Measure Q and Measure T funds for fiscal year 2024/2025.

The Authority originally budgeted Measure Q expenditures at \$2,977,000. Actual expenditures for all Measure Q expenses in FY 2024/2025 were \$1,811,096.

The Authority budgeted Measure T expenditures at \$8,442,064. Actual expenditures for all Measure T expenses in FY 2024/2025 were \$6,066,707.

The following table shows the summary breakdown of total expenditures by program as presented in the independent financial audit.

Table 2: Expenditures by Program	Measure Q	Measure T
Projects (Section II) -Capital Outlay -Conservation Initiatives and Grants -Planning -Field Operations and Maintenance -Community Engagement	\$1,042,292	\$4,363,170
Urban Grant Program (Section III)	\$768,804	\$26,364
Expenditure Plan Oversight Committee Costs (Section IV)	-	\$8,038
Administrative Costs (Section IV)	-	\$1,588,754
SCC Assessor's Fee (1%)*	-	\$80,381
TOTAL EXPENDITURES	\$1,811,096	\$6,066,707

*The Santa Clara County's Assessor's Office withholds 1% of the parcel tax revenues collected on behalf of the Authority. This fee is deducted from the first deposit in January 2025.

An expenditure is tracked using a project number and charged to an expense account in Acumatica, the Authority's accounting software. Expense accounts are grouped and reported under several major expense categories:

Payroll and Benefits include expenditures related to salaries, payroll taxes, and health benefits of full-time staff, part-time staff, and temporary staff.

Supplies and Consumables include goods and supplies purchased and intended for one-time and/or limited consumption. Examples include project-required supplies, postage, and printing expenses. Field operations-related supplies include safety supplies, fuel, supplies for disposing hazardous materials, vegetation management supplies, signs and fencing materials, and fire management supplies.

Expenses in this category also include mileage reimbursements to staff, as well as travel-related expenditures such as tolls, parking fees, and public transportation to offsite project meetings.

Outside Services include project expenditures related to professional services and consultancies rendered under a contract. Services may include:

- legal services
- design and content services
- community relations and media services
- resource management services such as site monitoring, wildlife management, vegetation management, fire management, public access maintenance, grazing program-related services, etc.
- planning services such as conservation planning, mapping and GIS support, CEQA, Environmental Site Assessment Phase One, etc.
- acquisition and construction-related services such as design and engineering services, surveys and investigations, appraisals, restoration and remediation, testing and inspections, etc.

Other Services and Fees capture miscellaneous fees and other expenses. Examples include business insurance, permitting fees, escrow fees, and brokerage fees. The Santa Clara County's Assessor's Office collector's fee (1%) is recorded under this category.

Equipment and Maintenance expenses include procurement and maintenance of tools, field and shop equipment, and fleet maintenance for vehicles used in field operations and maintenance of the Authority's preserves.

Facilities and Utilities cover all expenditures related to the maintenance of the public access facilities and buildings located on the Authority's preserves, as well as the water and electricity utility bills associated with the operations of the facilities.

Acquisitions capture the cost of acquiring fee title and conservation easements.

Authority Grant Programs disbursements are recorded and reported in this expense category line.



Of the total Measure Q-approved expenditures of \$1,811,096, Table 3 provides a breakdown by major expense category.

Table 3: Measure Q Expenditures by Major Expense Category	Budgeted Expenditures (\$)	Actual Expenditures (\$)	Percent of Total Budget (%)
Payroll and Benefits	\$0	\$0	0%
Supplies and Consumables	\$11,800	\$497	0%
Outside Services	\$1,329,700	\$923,732	31%
Other Services and Fees	\$85,500	\$17,954	1%
Equipment and Maintenance	\$0	\$108	0%
Facilities and Utilities	\$0	\$0	0%
Memberships and Library	\$0	\$0	0%
Acquisitions	\$1,550,000	\$100,000	3%
Authority Grant Programs	\$0	\$768,804	26%
TOTAL EXPENDITURES	\$2,977,000	\$1,811,096	61%

In Fiscal Year 2024/2025, the Authority utilized 61% of the approved Measure Q budget, as shown in the monochrome pie chart on the left. Of the actual expenditures, the colored pie chart on the right provides a visual breakdown of the \$1,811,096 spent by major expense category.

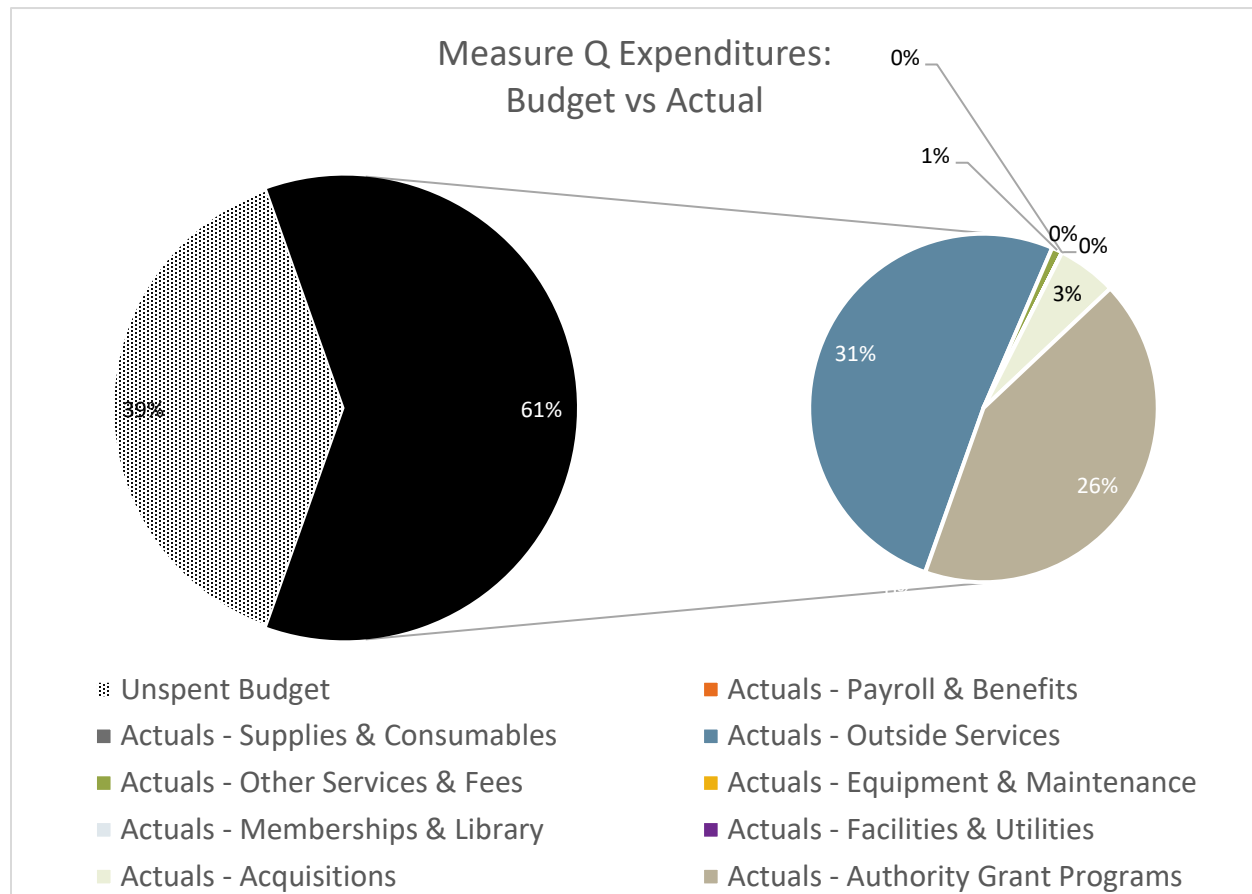


Figure 1

Of the total Measure T-approved expenditures of \$6,066,707, Table 4 provides a breakdown by major expense category.

Major Expense Category	Budgeted Expenditures (\$)	Actual Expenditures (\$)	Percent of Total Budget (%)
Payroll and Benefits	\$5,910,350	\$4,026,964	48%
Supplies and Consumables	\$367,900	\$357,682	4%
Outside Services	\$1,165,754	\$630,682	7%
Other Services and Fees	\$501,340	\$513,920	6%
Equipment and Maintenance	\$317,400	\$436,224	5%
Facilities and Utilities	\$79,320	\$74,101	1%
Memberships and Library	\$0	\$770	0%
Acquisitions	\$0	\$0	0%
Authority Grant Programs	\$100,000	\$26,364	0%
TOTAL EXPENDITURES	\$8,442,064	\$6,066,707	72%

In Fiscal Year 2024/2025, the Authority utilized 72% of the approved Measure T budget, as shown in the monochrome pie chart on the left. Of the actual expenditures, the colored pie chart on the right provides a visual breakdown of the \$6,066,707 spent by major expense category.

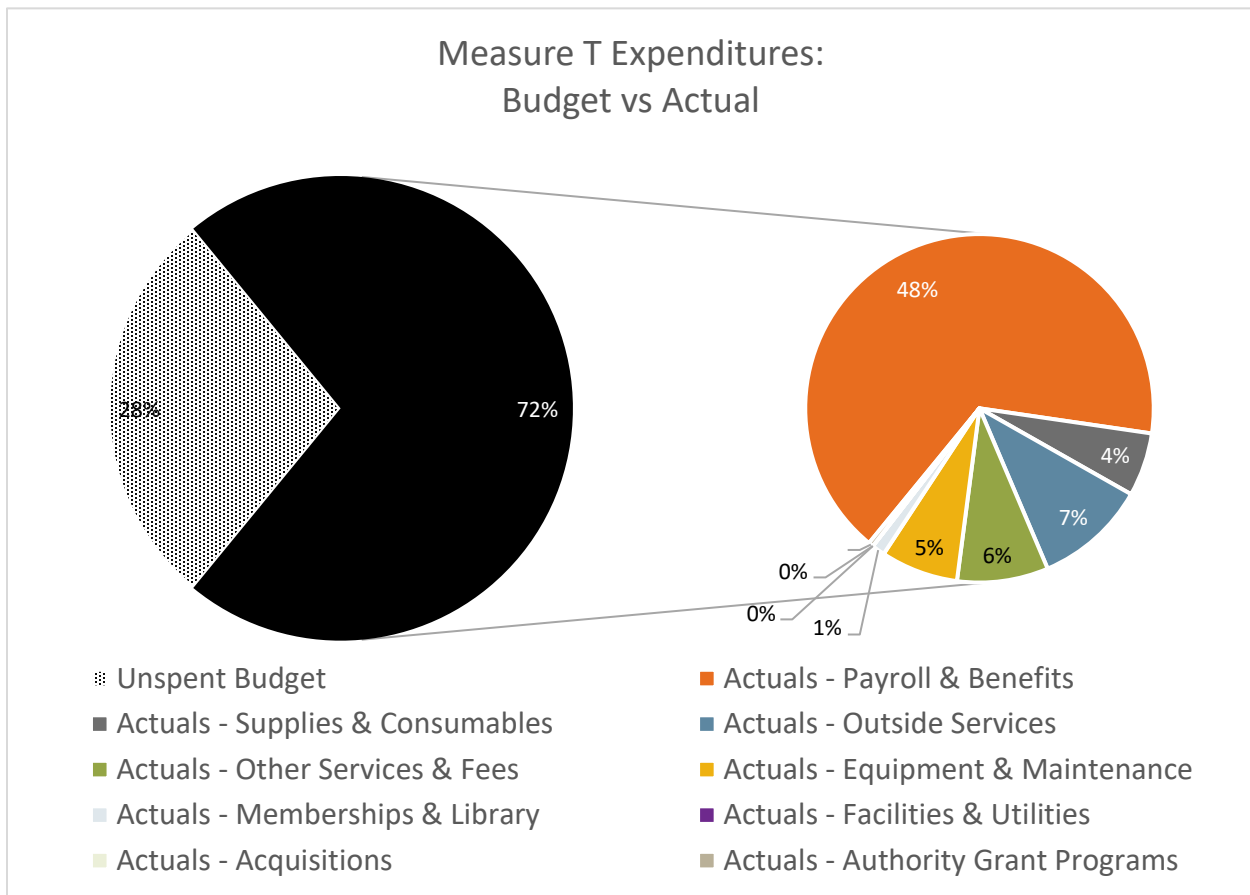


Figure 2

(for printing purposes – this page intentionally left blank)



Expenditure Plan Projects and Expenditures for Fiscal Year 2024/2025

(for printing purposes – this page intentionally left blank)

Parcel Tax Funded Programs and Projects

The *Measure Q Expenditure Plan* ([Appendix C](#)) and *Measure T Expenditure Plan* ([Appendix D](#)) state that the Open Space Authority will fund high priority projects distributed throughout the Santa Clara Valley Open Space Authority's jurisdiction. The projects were identified through a public process that informed conservation strategies and priorities for the Authority. The resulting vision plan developed by the Authority, the [Santa Clara Valley Greenprint](#), identifies critical open space, agricultural, and natural resource lands for protection and restoration.

Parcel tax revenues are used for:

- Funding the preservation of land including acquisitions and conservation easements.
- Paying for project costs including research, project-scoping, planning, construction, and maintenance.
- Paying for staff time associated with Measure Q and Measure T projects.
- Natural resource protection to protect and restore natural areas.
- Land operations and maintenance to maintain all of the Authority's existing and new preserves, trails and preserve-related infrastructure.
- The creation, development, delivery, and maintenance of existing and new environmental and agricultural education programs and initiatives.
- Funding the Urban Grant Program.

Expenditure Plan Categories

All projects funded by parcel tax revenues fall into at least one of the Expenditure Plan Categories (EPC) described in the *Expenditure Plans*. In Fiscal Year 2024/2025, the Authority expended a total of \$5,211,456 on eligible projects and disbursed \$795,167 to Urban Grant Program grantees.

Tables 5-8 on the following pages summarize the total costs spent in Fiscal Year 2024/2025 and the status of each project in each Expenditure Plan Category.

[Appendix A](#) is a complete index of all projects funded by Measure Q and Measure T funds in Fiscal Year 2024/2025. The table is sorted by project number and only lists project expenditures in service of the Expenditure Plan Categories. It does not include administrative fees and costs, committee costs, and grants disbursed under the Urban Grant Program.



EPC #1

**Protect Open Space, Redwood Forests,
Wildlife Habitat, Scenic Hillsides and
Agricultural Land**



Projects categorized under this program include acquisition of land and conservation easements from sellers in priority areas such as those in the Coyote Ridge, Upper Pajaro River, and Santa Cruz Mountains Conservation Focus Areas, as well as coordination of protection efforts through the development of policy frameworks, conservation strategies and tools, and resource management and use plans for open spaces, agricultural lands, and wildlife habitats.

In this reported fiscal year, the Authority expended \$1,516,667 on projects under this category.



Table 5: EPC #1 Projects

<i>Project Number</i>	<i>Project</i>	<i>MQ Funds Expended in FY 24/25</i>	<i>MT Funds Expended in FY 24/25</i>	<i>Status</i>	<i>% of EPC 1 Total Expenditures</i>
K-000188	Regional Project Reviews		211,441.78	Ongoing	14%
P-000014	Fuels Management Plan		809.13	In Progress - Delayed	0%
P-000019	Priority Land Acquisition Projects	33,535.00	263,961.57	Ongoing	20%
P-000024	Coyote Valley Conservation Strategy		28,120.77	Ongoing	2%
P-000112	Conservation Easement Monitoring		9,790.11	Ongoing	0%
P-000123	Natural Resource Policy and Planning		44,884.64	Ongoing	3%
P-000203	Tilton Ranch Acquisition		19,859.78	In Progress - Delayed	1%
P-000249	Coyote Valley Acquisitions	100,078.40	41,320.58	In Progress - On Track	9%
P-000250	Coyote Valley Conservation Areas Master Plan	433,109.43	327,166.03	In Progress - Delayed	50%
P-000356	Acquisition Strategy Document		2,589.74	On Hold	0%
<i>TOTAL EXPENDITURES FOR EPC 1</i>		<i>566,723</i>	<i>949,944</i>		

EPC #2

**Protect Land Around Creeks,
Rivers and Streams to
Prevent Pollution and
Improve Local Water Quality
and Supply**

Projects categorized under this program include coordinating efforts to protect local water supply and quality, and restoration and capital improvements.

In this reported fiscal year, the Authority expended \$362,780 on projects under this category.



Annual Expenditure Plan Status Report – FY 2024/2025

Table 6: EPC #2 Projects

<i>Project Number</i>	<i>Project</i>	<i>MQ Funds Expended in FY 24/25</i>	<i>MT Funds Expended in FY 24/25</i>	<i>Status</i>	<i>% of EPC 2 Total Expenditures</i>
P-000227	Blair Ranch Pond Habitat Enhancement (RC-07 & RC-10)	186,653.98	40,026.77	In Progress - On Track	62%
P-000251	Pajaro River Riparian Restoration		3,956.30	Completed	1%
P-000307	Spreckles Wetland Enhancement Project	24,307.73	8,641.08	In Progress - On Track	9%
P-000308	Fisher Creek Riparian Habitat Restoration (BEF-Funded)		2,616.69	In Progress - On Track	1%
P-000343	Fisher Creek Riparian Habitat Restoration (NFWF-Funded)		5,349.95	In Progress - On Track	1%
P-000344	Llagas Creek and Pajaro River Confluence Restoration Project		2,895.50	In Progress - Delayed	1%
P-000359	CVCAMP Restoration Pilot Project (stepping stone)	35,613.11	52,718.91	In Progress - On Track	24%
<i>TOTAL EXPENDITURES FOR EPC 2</i>		<i>246,575</i>	<i>116,205</i>		



EPC #3

Open, Improve and Maintain Parks, Open Space, and Trails

Projects categorized under this program include planning for and opening new open space preserves, designing and constructing new public access facilities on existing preserves, and providing science-based environmental education programs designed and created by Authority staff or through partnerships. This program also funds daily operation, management, and stewardship of the Authority's existing lands and public access facilities.

In this reported fiscal year, the Authority expended \$3,332,009 on projects under this category.



Table 7: EPC #3 Projects

<i>Project Number</i>	<i>Project</i>	<i>MQ Funds Expended in FY 24/25</i>	<i>MT Funds Expended in FY 24/25</i>	<i>Status</i>	<i>% of EPC 3 Total Expenditures</i>
K-000373	Habitat Stewardship Program		158,727.91	Ongoing	5%
K-000374	Agriculture Program		88,112.55	Ongoing	3%
P-000032	Coyote Valley Open Space Preserve Improved North Meadow Public Access	106,860.03	96,520.25	In Progress - On Track	6%
P-000035	Coyote Valley Open Space Preserve Equestrian Lot Improvements		39,906.32	Completed	1%
P-000036	Rancho Cañada del Oro Llagas Creek Bridge and Day Use Area	2,105.86	5,394.22	Completed	0%
P-000087	Coyote Valley Open Space Preserve Operations & Maintenance		448,194.90	Ongoing	13%
P-000088	Sierra Vista Open Space Preserve Operations & Maintenance		605,075.36	Ongoing	18%
P-000089	Coyote Ridge Open Space Preserve Operations & Maintenance		364,896.14	Ongoing	11%
P-000090	Rancho Cañada del Oro Open Space Preserve Operations & Maintenance		344,972.76	Ongoing	10%
P-000091	Diablo Foothills Open Space Preserve Operations & Maintenance		16,935.86	Ongoing	1%
P-000092	Little Uvas Open Space Preserve Operations & Maintenance		4,243.53	Ongoing	0%
P-000093	Palassou Ridge Open Space Preserve Operations & Maintenance		12,989.50	Ongoing	0%
P-000095	North Pajaro River Agricultural Preserve Operations & Maintenance		17,487.82	Ongoing	1%
P-000096	Santa Teresa Foothills Open Space Preserve Operations & Maintenance		5,657.76	Ongoing	0%
P-000097	Upper Uvas Open Space Preserve Operations & Maintenance		1,687.72	Ongoing	0%
P-000098	Mount Chual Open Space Preserve Operations & Maintenance		1,849.41	Ongoing	0%
P-000099	El Toro Open Space Preserve Operations & Maintenance		15,345.76	Ongoing	0%
P-000202	South Pajaro River AP Operations & Maintenance		14,604.66	Ongoing	0%
P-000247	Interp & Environmental Education Program		359,639.49	Ongoing	11%
P-000248	Volunteer Program		116,786.26	Ongoing	3%
P-000267	North Coyote Valley Conservation Area Operations & Maintenance		52,106.78	Ongoing	2%
P-000268	Tulare Meadows Operations & Maintenance		21,943.42	Ongoing	1%
P-000272	Fisher's Bend Agricultural Preserve Operations & Maintenance		616.89	Ongoing	0%

Annual Expenditure Plan Status Report – FY 2024/2025

<i>Project Number</i>	<i>Project</i>	<i>MQ Funds Expended in FY 24/25</i>	<i>MT Funds Expended in FY 24/25</i>	<i>Status</i>	<i>% of EPC 3 Total Expenditures</i>
P-000283	Parking Reservation System		250.84	Cancelled	0%
P-000309	COVA Operations and Maintenance		186,272.21	Ongoing	6%
P-000324	Rancho Cañada del Oro Open Space Preserve Regional Trail Planning	58,919.32	46,622.09	In Progress - On Track	3%
P-000336	Monarch Habitat Restoration Project		9,206.60	In Progress - On Track	0%
P-000346	Tilton House Complex Home Improvements	32,060.00	807.34	Completed	1%
P-000350	Croy Redwoods Operation & Maintenance		0	Ongoing	0%
P-000352	Coyote Valley Operation & Maintenance		36,549.38	Ongoing	1%
P-000353	2023 Winter Storms Emergency Response and Repairs		933.87	In Progress - On Track	0%
P-000354	Tilton Ranch Complex Master Planning	29,049.26	4,510.43	In Progress - On Track	1%
P-000357	Agricultural Strategic Plan		807.70	In Progress - On Track	0%
P-000377	Coyote Valley Open Space Preserve Repairs Unauthorized Vehicles		3,494.67	Completed	0%
P-000383	MOCR Native Plant Gateway Restoration		17,559.36	In Progress - On Track	1%
P-000384	El Toro Public Access		2,107.76	In Progress - On Track	0%
P-000385	Natural Resources GIS Monitoring Tools		196.84	In Progress - Delayed	0%
TOTAL EXPENDITURES FOR EPC 3		228,994	3,103,014		



EPC #4 Urban Open Space, Parks and Environmental Education Program

As structured by the *Expenditure Plan*, a grant program would be established, with monies set aside to assist municipalities, schools and applicable non-profit organizations, for projects within the cities of Milpitas, Santa Clara, San Jose, Campbell, Morgan Hill and urban County areas to create healthy and safe open space and park areas for their communities. Funds are made available through an annual grant allocation process that is subject to approval by the Authority's Governing Board of Directors.



*Clockwise starting from the left –
Veggielution's Farm to Table; Santa Clara Unified School District's Equitable Access Through Implementing Native Gardens (EATING); Acterra's You(th) be the Change; Santa Clara County Public Health Department's JUNTOS Initiative*



Table 8: EPC #4 Disbursements

Grant Number	Project	MQ Funds Disbursed in FY 24/25	MT Funds Disbursed in FY 24/25	Status	% of EPC 4 Total Disbursements
G-000046	Sacred Heart Community Service	2,840.00		CLOSED	0%
G-000050	Veggielution	14,729.59		CLOSED	2%
G-000051	Santa Clara Valley Audubon Society	3,523.56		Active	0%
G-000053	Guadalupe River Park Conservancy	17,405.60		Active	2%
G-000054	SCC Public Health Dept JUNTOS	24,558.61		CLOSED	3%
G-000060	Acterra: Action for a Healthy Planet	54,680.87		Active	7%
G-000061	Bay Area Ridge Trail Council	14,292.50		Active	2%
G-000063	Earth Island Institute - Bay Area Wilde	8,805.00		Active	1%
G-000064	Garden to Table Silicon Valley	16,886.59		Active	2%
G-000065	Green Foothills	54,805.55		CLOSED	7%
G-000066	Guadalupe River Park Conservancy	25,246.15		Active	3%
G-000067	San Jose Conservation Corps and Charter	42,038.74		Active	5%
G-000068	San Jose State University Research Foun	38,401.86		Active	5%
G-000069	Santa Clara Unified School District	30,924.86		Active	4%
G-000070	Saved By Nature	35,346.62		Active	4%
G-000071	Valley Verde	27,909.50		Active	4%
G-000072	Veggielution	18,014.85		Active	2%
G-000073	City of San Jose	45,000.00		Active	6%
G-000075	Children's Discovery Museum	88,393.20		Active	11%
G-000076	Santa Clara Unified School District	200,000.00		CLOSED	25%
G-000077	School of Arts and Culture	5,000.00		Active	1%
G-000078	Veggielution		26,363.76	Active	3%
TOTAL EXPENDITURES FOR EPC 4		768,804	26,364		

More information regarding the Urban Grant Program and disbursements recorded under this category is provided in Section III of this report.

Status and Expenditures by Project

As stated in the *Expenditure Plans*, Authority staff are required to file a report with the Board of Directors on the status of projects that received Measure Q and Measure T funds for the fiscal year being reported. To collect the necessary data, the Authority utilizes Acumatica, a financial ERP system, to track expenditures by Project IDs.

Beginning with Fiscal Year 2019/2020, the Authority began reporting the statuses of work plan projects to the Board of Directors on a quarterly basis.

In Fiscal Year 2024/2025, the Authority tracked and reported on over fifty individual projects. The project status pages provide an update for each project as of June 30, 2025.

Table 9: Status Definitions

Status	Description
Ongoing	Applicable to some program and preserve operation & maintenance project IDs. These Acumatica Project IDs track MQ-eligible expenditures but typically do not appear on the agency's Annual Work Plan since they do not have projected end dates
In Progress – On Track	The project is active and the declared milestones for the fiscal year have been completed
In Progress – Ahead of Schedule	The project is active and additional work has been completed beyond the declared milestones for the fiscal year
In Progress – Delayed	The project is active but some of the declared milestones for the fiscal year have not been completed
On Hold	The project has been placed on hold. Minimal work may have been performed during the fiscal year prior to being placed on hold
Completed	The project is completed

A project may be delayed or placed on hold for various reasons, including but not limited to: lack of funding sources, limited staff capacity, permitting delays, unforeseen environmental impacts, reprioritization, etc. The following projects have been placed on hold during the course of Fiscal Year 2024/2025:

Table 10: Projects Placed on Hold

Project Number	Project
P-000356	Acquisition Strategy Document

Due to the confidential nature of ongoing negotiations, expenses incurred for all current acquisition projects are reported under P-000019 (Priority Land Acquisition Projects). Descriptions and a breakdown of expenditures for acquisitions are only presented in the report after the close of escrow.

By June 30, 2025, the Authority completed the following projects by the end of the fiscal year:

Table 11: Completed Projects	
Project Number	Project
P-000035	Coyote Valley Open Space Preserve Equestrian Lot Improvements
P-000036	Rancho Cañada del Oro Llagas Creek Bridge and Day Use Area
P-000251	Pajaro River Riparian Restoration
P-000346	Tilton Ranch Complex Home Improvements
P-000377	Coyote Valley Open Space Preserve Repairs Unauthorized Vehicles

The project status pages are grouped and presented by EPC number.

How to Read the Project Status Pages

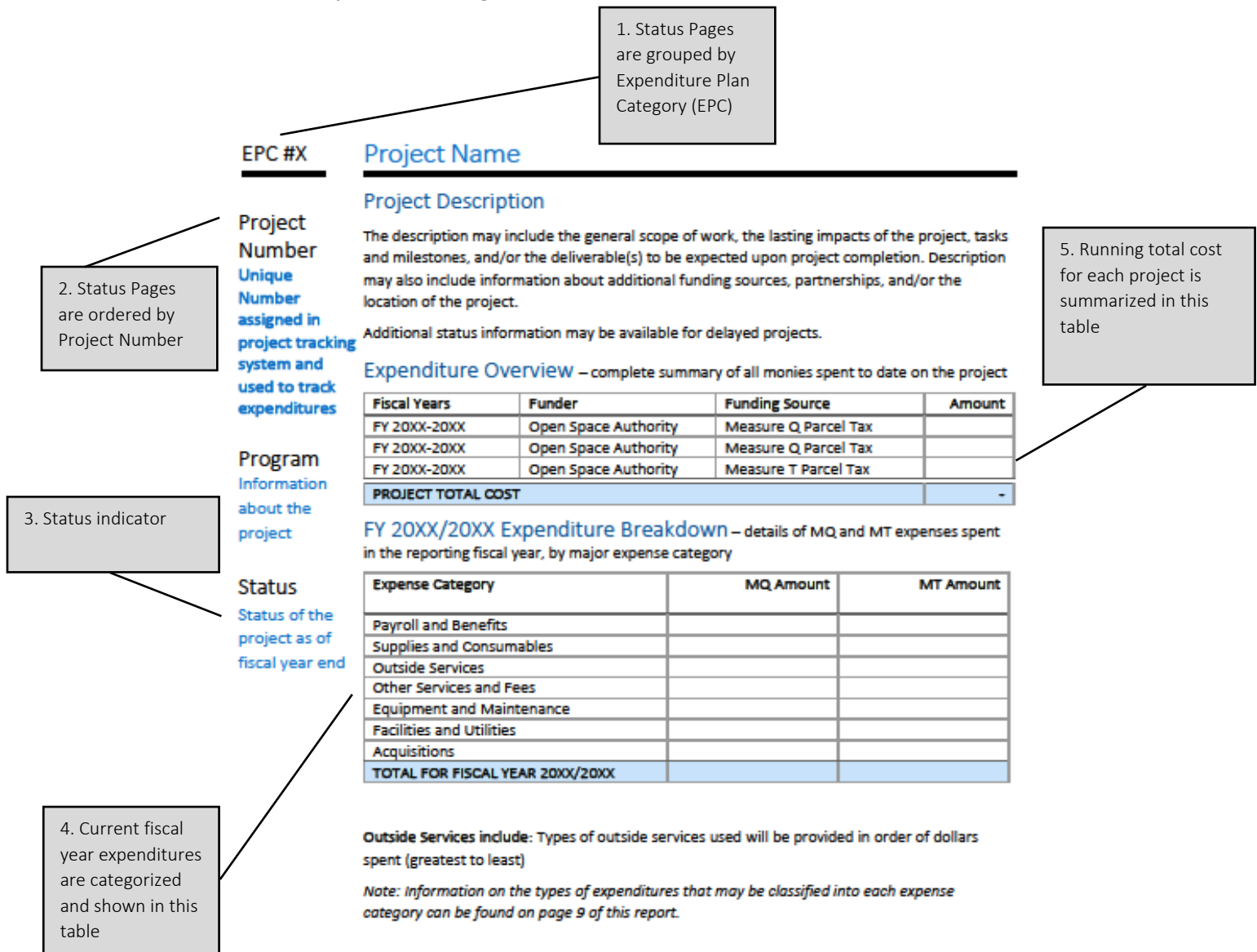


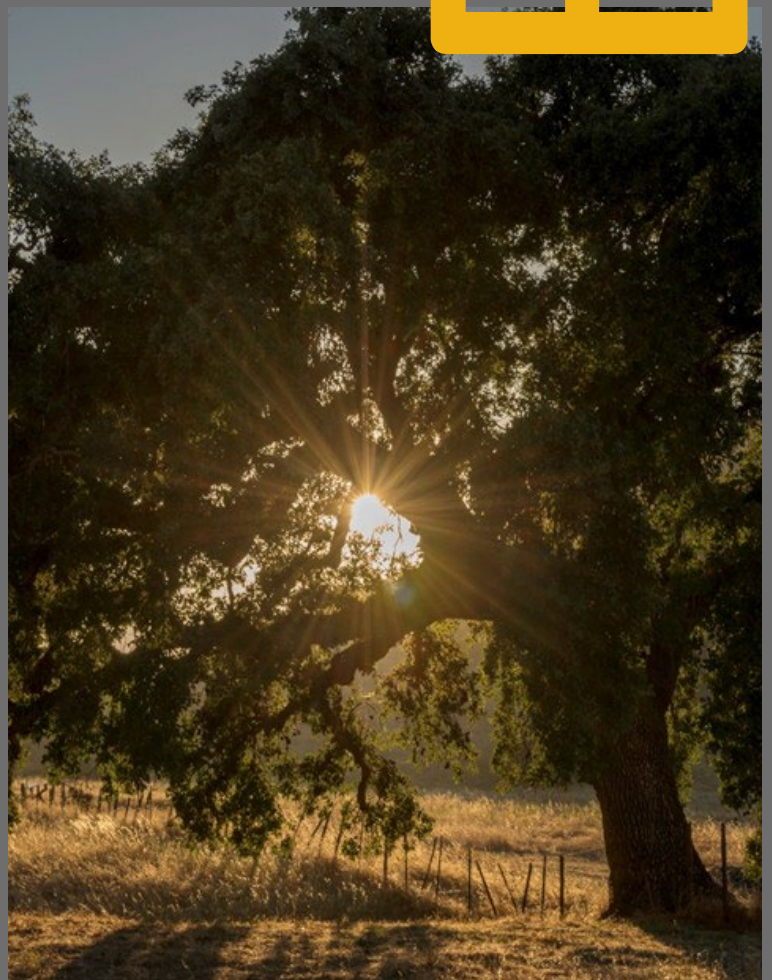
Figure 3

TO C P E



EXPENDITURE PLAN CATEGORY #1

The purpose of this program is to permanently protect new open space lands essential to completing connections in the region's park, open space and habitat systems as identified in the Authority's Santa Clara Valley Greenprint, the County Parks Acquisition Plan, Santa Clara Valley Habitat Plan, and other adopted plans.



(for printing purposes – this page intentionally left blank)

EPC #1

Regional Project Reviews

Project
Number
K-000188

Program
Conservation

Status
Ongoing

Project Description

As part of the Authority's conservation efforts in the region, the agency reviews regional plans, development projects and associated environmental impact reports and agency initiatives or policies that may have an effect on conservation within the Authority's jurisdictions. These projects may also alert Authority staff to a potential acquisition opportunity that needs to be reviewed. Work included under this project number encompasses reviewing the policy or project documents and developing a response or series of comments that needs to be submitted to the relevant agency such that they consider the Authority's position and potentially make a more informed decision. There are also times when these projects require legal review.

The Authority is respected in the conservation community, and the preparation of expert comments and technical narratives for the purpose of informing or guiding partner agency decision-making is a critical part of the Authority's mission-wide conservation work.

Expenditure Overview

Fiscal Years	Funder	Funding Source	Amount
FY 2015-2024	Open Space Authority	Measure Q Parcel Tax	\$98,221
FY 2015-2024	Open Space Authority	Measure T Parcel Tax	\$142,431
FY 2024-2025	Open Space Authority	Measure Q Parcel Tax	-
FY 2024-2025	Open Space Authority	Measure T Parcel Tax	\$211,442
PROJECT TOTAL COST			\$452,093

FY 2024/2025 Expenditure Breakdown

Expense Category	MQ Amount	MT Amount
Payroll and Benefits	-	\$116,898
Supplies and Consumables	-	-
Outside Services	-	\$94,544
Other Services and Fees	-	-
Equipment and Maintenance	-	-
Facilities and Utilities	-	-
Acquisitions	-	-
TOTAL FOR FISCAL YEAR 2024/2025	-	\$211,442

Outside Services include: Legal Services; Strategic Planning; Conservation Planning; Environmental Education Partnerships

Note: Information on the types of expenditures that may be classified into each expense category can be found on page 9 of this report.

EPC #1

Fuels Management Program

Project
Number
P-000014

Program
Resource
Management

Status
In Progress -
Delayed

Project Description

Staff is reviewing the needs and benefits of developing a wildfire management program that will serve to assess the Authority's lands for wildfire hazards, prevention and management. Work includes developing a wildlands fuel management policy and plan that will define fuel management goals and objectives, identify and prioritize fuel reduction treatments, and describe methods that reduce wildfire risk and achieve natural resource goals across Authority lands.

Awaiting Habitat Program Manager to assume responsibility of project. Position tentatively scheduled to be filled Jan 2026.

Expenditure Overview

Fiscal Years	Funder	Funding Source	Amount
FY 2015-2024	Open Space Authority	Measure Q Parcel Tax	\$21,188
FY 2015-2024	Open Space Authority	Measure T Parcel Tax	\$93,796
FY 2024-2025	Open Space Authority	Measure Q Parcel Tax	-
FY 2024-2025	Open Space Authority	Measure T Parcel Tax	\$809
PROJECT TOTAL COST			\$115,793

FY 2024/2025 Expenditure Breakdown

Expense Category	MQ Amount	MT Amount
Payroll and Benefits	-	\$809
Supplies and Consumables	-	-
Outside Services	-	-
Other Services and Fees	-	-
Equipment and Maintenance	-	-
Facilities and Utilities	-	-
Acquisitions	-	-
TOTAL FOR FISCAL YEAR 2024/2025	-	\$809

Outside Services include:

Note: Information on the types of expenditures that may be classified into each expense category can be found on page 9 of this report.

EPC #1

Priority Land Acquisition Projects

Project
Number
P-000019

Program
Acquisition

Status
Ongoing

Project Description

Work under this project includes protection of land in the Conservation Focus Areas as outlined in the Santa Clara Valley Greenprint through purchase of fee title, conservation easement, or other real property interest. Prior to pursuing protection of a property, scope of work includes conducting preliminary due diligence, engaging with willing sellers, and performing early analysis of site/local resources and internal evaluation to determine if a potential acquisition meets the Authority's criteria for purchase. Due to the confidential nature of ongoing negotiations, property names, property owner(s) information, and other details are withheld.

Expenditure Overview

Fiscal Years	Funder	Funding Source	Amount
FY 2015-2024	Open Space Authority	Measure Q Parcel Tax	\$1,079,368
FY 2015-2024	Open Space Authority	Measure T Parcel Tax	\$390,637
FY 2015-2024	County of Santa Clara	MOU for Acquisitions of Agricultural Conservation Easements	\$14,368
FY 2024-2025	Open Space Authority	Measure Q Parcel Tax	\$33,535
FY 2024-2025	Open Space Authority	Measure T Parcel Tax	\$263,962
FY 2024-2025	County of Santa Clara	MOU for Acquisitions of Agricultural Conservation Easements	\$10,075
PROJECT TOTAL COST			\$1,791,944

FY 2024/2025 Expenditure Breakdown

Expense Category	MQ Amount	MT Amount
Payroll and Benefits	-	\$86,756
Supplies and Consumables	-	-
Outside Services	\$33,535	\$177,206
Other Services and Fees	-	-
Equipment and Maintenance	-	-
Facilities and Utilities	-	-
Acquisitions	-	-
TOTAL FOR FISCAL YEAR 2024/2025	\$33,535	\$263,962

Outside Services include: Appraisals; Legal Services

Note: Information on the types of expenditures that may be classified into each expense category can be found on page 9 of this report.

EPC #1

Coyote Valley Conservation Strategy

Project
Number
P-000024

Program
Conservation

Status
Ongoing

Project Description

This project encompasses the larger conservation vision for the long term protection of Coyote Valley. Coyote Valley represents the last remaining contiguous block of undeveloped open land in Santa Clara County. It is a critical wildlife corridor between the Santa Cruz Mountains and the Diablo Range. It also contains some of the last remaining prime farms soils in the County.

The strategy includes cross-departmental work on a comprehensive plan to protect and maintain the multiple natural and agricultural benefits and environmental services, including wildlife connectivity in Coyote Valley across thousands of acres. Given the current development threats to the remaining vacant lands in Coyote Valley, this initiative has been a key focus of the Authority. This work requires extensive technical planning, policy review and coordination with a wide range of lawmakers and stakeholders. The work also includes taking initiative and hosting partner meetings to identify important steps and strategies to preserve this important landscape.

Expenditure Overview

Fiscal Years	Funder	Funding Source	Amount
FY 2015-2024	Open Space Authority	Measure Q Parcel Tax	\$519,864
FY 2015-2024	Open Space Authority	Measure T Parcel Tax	\$185,154
FY 2024-2025	Open Space Authority	Measure Q Parcel Tax	-
FY 2024-2025	Open Space Authority	Measure T Parcel Tax	\$28,121
PROJECT TOTAL COST			\$733,139

FY 2024/2025 Expenditure Breakdown

Expense Category	MQ Amount	MT Amount
Payroll and Benefits	-	\$28,121
Supplies and Consumables	-	-
Outside Services	-	-
Other Services and Fees	-	-
Equipment and Maintenance	-	-
Facilities and Utilities	-	-
Acquisitions	-	-
TOTAL FOR FISCAL YEAR 2024/2025	-	\$28,121

Outside Services include:

Note: Information on the types of expenditures that may be classified into each expense category can be found on page 9 of this report.

EPC #1

Conservation Easement Monitoring

Project
Number
P-000112

Program
Conservation

Status
Ongoing

Project Description

As of June 30, 2024, the Authority holds 17 conservation easements. Just before an easement is recorded, staff prepares a baseline report of existing conditions to record the uses and structures on the site. Each year, staff conducts annual monitoring and creates a report for each easement to document any changes that may have taken place and to ensure that the site is being managed in compliance with the terms of the easement.

Expenditure Overview

Fiscal Years	Funder	Funding Source	Amount
FY 2015-2024	Open Space Authority	Measure Q Parcel Tax	\$183,761
FY 2015-2024	Open Space Authority	Measure T Parcel Tax	\$24,104
FY 2024-2025	Open Space Authority	Measure Q Parcel Tax	-
FY 2024-2025	Open Space Authority	Measure T Parcel Tax	\$9,790
PROJECT TOTAL COST			\$217,656

FY 2024/2025 Expenditure Breakdown

Expense Category	MQ Amount	MT Amount
Payroll and Benefits	-	\$4,913
Supplies and Consumables	-	-
Outside Services	-	\$4,878
Other Services and Fees	-	-
Equipment and Maintenance	-	-
Facilities and Utilities	-	-
Acquisitions	-	-
TOTAL FOR FISCAL YEAR 2024/2025	-	\$9,790

Outside Services include: Legal Services

Note: Information on the types of expenditures that may be classified into each expense category can be found on page 9 of this report.

EPC #1

Natural Resource Policy and Planning

Project
Number
P-000123

Program
Resource
Management

Status
Ongoing

Project Description

An ongoing project that encompasses strategic planning coordination within the Authority and with regional partners to engage in current and state of the art resource management practices and projects on its preserves. Scope of work includes specialized training or discussion related to natural resource management practices and tools that are the subject of research or other current thought leadership. This assists the agency in staying current with best practices and with planning and developing new management projects that provide maximum benefits for its lands and efficiency for the field teams and others conducting the work. Work will also include coordination with field staff on resource management activities and day to day oversight of the resource management program.

Expenditure Overview

Fiscal Years	Funder	Funding Source	Amount
FY 2015-2024	Open Space Authority	Measure Q Parcel Tax	\$104,507
FY 2015-2024	Open Space Authority	Measure T Parcel Tax	\$133,705
FY 2024-2025	Open Space Authority	Measure Q Parcel Tax	-
FY 2024-2025	Open Space Authority	Measure T Parcel Tax	\$44,885
PROJECT TOTAL COST			\$283,097

FY 2024/2025 Expenditure Breakdown

Expense Category	MQ Amount	MT Amount
Payroll and Benefits	-	\$39,785
Supplies and Consumables	-	-
Outside Services	-	\$5,100
Other Services and Fees	-	-
Equipment and Maintenance	-	-
Facilities and Utilities	-	-
Acquisitions	-	-
TOTAL FOR FISCAL YEAR 2024/2025	-	\$44,885

Outside Services include: General Planning Services

Note: Information on the types of expenditures that may be classified into each expense category can be found on page 9 of this report.

EPC #1

Tilton Ranch Acquisition

Project
Number
P-000203

Program
Acquisition

Status
In Progress -
Delayed

Project Description

Tilton Ranch totals ~1,861 acres and spans from Coyote Valley Open Space Preserve to just north of the Morgan Hill city limits. After many years of negotiations between the former owner and the Authority in partnership with the Valley Habitat Agency, the Valley Habitat Agency purchased Tilton Ranch in October 2020. Through a funding agreement, the Authority contributed \$1,379,090, plus \$1,000,000 in grant funds from the Metropolitan Transportation Commission's Priority Conservation Area Program towards the acquisition of the main Tilton Ranch. The aim of this project is to transfer fee title of Tilton Ranch to the Authority with a conservation easement to be retained by the Habitat Agency so that it can be enrolled into the Santa Clara Valley Habitat Conservation Plan's Reserve system.

Document drafting has been delayed due to the change in the transaction structure whereby the Authority will be holding a Conservation Easement with public access rights instead of owning fee title to the property.

Expenditure Overview

Fiscal Years	Funder	Funding Source	Amount
FY 2015-2024	Open Space Authority	Measure Q Parcel Tax	\$3,550,757
FY 2015-2024	Open Space Authority	Measure T Parcel Tax	\$474,915
FY 2024-2025	Open Space Authority	Measure Q Parcel Tax	-
FY 2024-2025	Open Space Authority	Measure T Parcel Tax	\$19,860
PROJECT TOTAL COST			\$4,045,532

FY 2024/2025 Expenditure Breakdown

Expense Category	MQ Amount	MT Amount
Payroll and Benefits	-	\$9,018
Supplies and Consumables	-	-
Outside Services	-	\$10,842
Other Services and Fees	-	-
Equipment and Maintenance	-	-
Facilities and Utilities	-	-
Acquisitions	-	-
TOTAL FOR FISCAL YEAR 2024/2025	-	\$19,860

Outside Services include: Legal Services

Note: Information on the types of expenditures that may be classified into each expense category can be found on page 9 of this report.

EPC #1

Coyote Valley Acquisitions

Project
Number
P-000249

Program
Acquisition

Status
In Progress -
On Track

Project Description

Coordinate with POST and City of San Jose to permanently protect land in the North Coyote Valley as identified in the Landscape Linkage report and in support of the City's Measure T

Laguna Seca has transferred to the Authority as of 11/14/24. The \$6M grant from California Natural Resources Agency is expected to be closed out in Q3. The \$10M grant from State Parks has been closed out.

Mid-Coyote Valley Phase I closed escrow in March

Expenditure Overview

Fiscal Years	Funder	Funding Source	Amount
FY 2015-2024	Open Space Authority	Measure Q Parcel Tax	\$5,472,397
FY 2015-2024	Open Space Authority	Measure T Parcel Tax	\$53,892
FY 2024-2025	Open Space Authority	Measure Q Parcel Tax	\$100,078
FY 2024-2025	Open Space Authority	Measure T Parcel Tax	\$41,321
FY 2024-2025	California Natural Resources Agency	Urban Flood Protection Program	\$600,000
PROJECT TOTAL COST			\$6,267,688

FY 2024/2025 Expenditure Breakdown

Expense Category	MQ Amount	MT Amount
Payroll and Benefits	-	\$39,564
Supplies and Consumables	\$78	\$230
Outside Services	-	\$1,528
Other Services and Fees	-	-
Equipment and Maintenance	-	-
Facilities and Utilities	-	-
Acquisitions	\$100,000	-
TOTAL FOR FISCAL YEAR 2024/2025	\$100,078	\$41,321

Outside Services include: Legal Services

Note: Information on the types of expenditures that may be classified into each expense category can be found on page 9 of this report.

EPC #1

Coyote Valley Conservation Areas Master Plan

Project
Number
P-000250

Program
Conservation

Status
In Progress -
Delayed

Project Description

A master vision plan for Authority and partner-owned conservation lands in Coyote Valley as implementation to the 2017 Coyote Valley Landscape Linkage Report. The plan will set forth landscape scale strategies and site-specific implementation actions for integrating multi-benefit values and features with the goal of long-term conservation and ecological restoration.

New consultant team was onboarded in April. Visioning phase is nearly complete and conceptual alternatives phase is set to begin in August.

Expenditure Overview

Fiscal Years	Funder	Funding Source	Amount
FY 2015-2024	Open Space Authority	Measure Q Parcel Tax	\$1,642,240
FY 2015-2024	Open Space Authority	Measure T Parcel Tax	\$1,519,446
FY 2015-2024	CA Wildlife Conservation Board	Prop 68 CA Drought, Wate, Parks, Climate, Coastal Protection and Outdoor Access for All Fund	\$335,167
FY 2015-2024	Santa Clara County MOU	Santa Clara County MOU	\$83,171
FY 2015-2024	Anonymous	Private Grant	\$99,404
FY 2024-2025	State Coastal Conservancy	Local Assistance Program	\$7,314
FY 2024-2025	Open Space Authority	Measure Q Parcel Tax	\$433,109
FY 2024-2025	Open Space Authority	Measure T Parcel Tax	\$327,166
FY 2024-2025	CA Wildlife Conservation Board	Prop 68 CA Drought, Wate, Parks, Climate, Coastal Protection and Outdoor Access for All Fund	\$8,470
FY 2024-2025	Anonymous	Private Grant	\$596
FY 2024-2025	Department of Water Resources	Agreement 4600015348	\$106,296
FY 2024-2025	State Coastal Conservancy	Local Assistance Program	\$35,888
PROJECT TOTAL COST			\$4,598,267

FY 2024/2025 Expenditure Breakdown

Expense Category	MQ Amount	MT Amount
Payroll and Benefits	-	\$317,973
Supplies and Consumables	\$419	\$40
Outside Services	\$430,232	\$9,153
Other Services and Fees	\$2,350	-
Equipment and Maintenance	\$108	-
Facilities and Utilities	-	-
Acquisitions	-	-
TOTAL FOR FISCAL YEAR 2024/2025	\$433,109	\$327,166

Outside Services include: Long-Range Planning; Media Services; Conservation Planning; Site Monitoring; Environmental Review; Wildlife Mgmt

Note: Information on the types of expenditures that may be classified into each expense category can be found on page 9 of this report.

EPC #1

Acquisition Strategy Document

Project
Number
P-000356

Program
Conservation

Status
On Hold

Project Description

Develop updated criteria for evaluating land acquisitions and use these criteria to identify key lands for the Authority to acquire in fee or conservation easement to meet the Authority's goals, including identifying regional conservation priorities in which the Authority may play a unique role and key parcels necessary to support conservation, operational, and public access needs of the Authority's existing preserves.

Expenditure Overview

Fiscal Years	Funder	Funding Source	Amount
FY 2015-2024	Open Space Authority	Measure Q Parcel Tax	-
FY 2015-2024	Open Space Authority	Measure T Parcel Tax	\$11,840
FY 2024-2025	Open Space Authority	Measure Q Parcel Tax	-
FY 2024-2025	Open Space Authority	Measure T Parcel Tax	\$2,590
PROJECT TOTAL COST			\$14,430

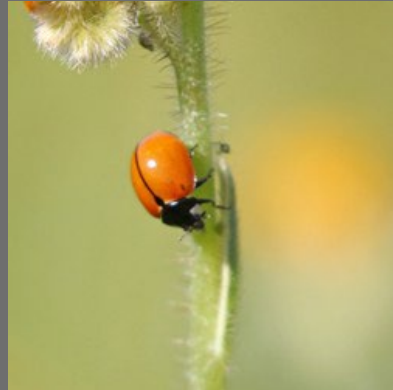
FY 2024/2025 Expenditure Breakdown

Expense Category	MQ Amount	MT Amount
Payroll and Benefits	-	\$2,590
Supplies and Consumables	-	-
Outside Services	-	-
Other Services and Fees	-	-
Equipment and Maintenance	-	-
Facilities and Utilities	-	-
Acquisitions	-	-
TOTAL FOR FISCAL YEAR 2024/2025	-	\$2,590

Outside Services include:

Note: Information on the types of expenditures that may be classified into each expense category can be found on page 9 of this report.

2 C P E



EXPENDITURE PLAN CATEGORY #2

The purpose of this program is to protect and restore natural areas that buffer our rivers, lakes and streams, including the Guadalupe River, Coyote Creek, Fisher Creek, Penitencia Creek, Upper Alameda Creek, Uvas Creek, Llagas Creek, Pacheco Creek, Pescadero Creek and the Pajaro River to protect water supply and water quality.



(for printing purposes – this page intentionally left blank)

EPC #2

Blair Ranch Pond Habitat Enhancement (RC-07 & RC-10)

Project
Number
P-000227

Program
Resource
Management

Status
In Progress -
On Track

Project Description

Enhance and restore at-risk breeding pond habitats to protect California red-legged frogs and enhance climate resiliency at Rancho Cañada del Oro Open Space Preserve

Contract was awarded to Triangle Land Restoration, monitoring consultants procured, project is underway. Construction will be complete in fall 2025, and post-construction planting, fencing, irrigation, and monitoring will begin shortly thereafter.

Expenditure Overview

Fiscal Years	Funder	Funding Source	Amount
FY 2015-2024	Open Space Authority	Measure Q Parcel Tax	\$228,756
FY 2015-2024	Open Space Authority	Measure T Parcel Tax	\$85,266
FY 2015-2024	Valley Water	2020 Safe, Clean Water Project D3 Grant Agreement	\$21,500
FY 2024-2025	Open Space Authority	Measure Q Parcel Tax	\$186,654
FY 2024-2025	Open Space Authority	Measure T Parcel Tax	\$40,027
PROJECT TOTAL COST			\$540,702

FY 2024/2025 Expenditure Breakdown

Expense Category	MQ Amount	MT Amount
Payroll and Benefits	-	\$38,575
Supplies and Consumables	-	-
Outside Services	\$186,184	\$1,452
Other Services and Fees	\$470	-
Equipment and Maintenance	-	-
Facilities and Utilities	-	-
Acquisitions	-	-
TOTAL FOR FISCAL YEAR 2024/2025	\$186,654	\$40,027

Outside Services include: Construction; Site Monitoring; General Planning Services; Project Mgmt Services

Note: Information on the types of expenditures that may be classified into each expense category can be found on page 9 of this report.

EPC #2

Pajaro River Riparian Restoration

Project
Number
P-000251

Program
Resource
Management

Status
Completed

Project Description

Restore stream habitat by reshaping stream bank, removing invasive species, and planting climate-smart riparian species along .75-mile of the Pajaro River on the Pajaro River Agricultural Preserve South Property to benefit wildlife habitat and water quality. Partner with Point Blue Conservation Science's Students and Teachers Restoring a Watershed (STRAW) program to provide outdoor environmental education opportunities for school kids.

The majority of these tasks are being performed by Triangle Land Restoration Consultants under contract with Valley Habitat Agency. The project is completed and is now in a long-term maintenance and monitoring phase.

Expenditure Overview

Fiscal Years	Funder	Funding Source	Amount
FY 2015-2024	Open Space Authority	Measure Q Parcel Tax	\$14,103
FY 2015-2024	Open Space Authority	Measure T Parcel Tax	\$46,489
FY 2024-2025	Open Space Authority	Measure Q Parcel Tax	-
FY 2024-2025	Open Space Authority	Measure T Parcel Tax	\$3,956
PROJECT TOTAL COST			\$64,548

FY 2024/2025 Expenditure Breakdown

Expense Category	MQ Amount	MT Amount
Payroll and Benefits	-	\$3,956
Supplies and Consumables	-	-
Outside Services	-	-
Other Services and Fees	-	-
Equipment and Maintenance	-	-
Facilities and Utilities	-	-
Acquisitions	-	-
TOTAL FOR FISCAL YEAR 2024/2025	-	\$3,956

Outside Services include:

Note: Information on the types of expenditures that may be classified into each expense category can be found on page 9 of this report.

EPC #2

Spreckles Wetland Enhancement Project

Project
Number
P-000307

Program
Resource
Management

Status
In Progress -
On Track

Project Description

The goal of the Spreckles Wetland Cleanup and Enhancement Project is to enhance habitat within Spreckles Wetland through the removal of trash, debris and invasive plant species; to enhance habitat through modification of the culvert to allow for water to spread out more extensively and increase the size of, and variability in water depth within, the wetland; and to monitor the results of these enhancements on native flora and fauna.

Phase II archaeological testing is complete. Debris removal will take place in FY 25-26.

Expenditure Overview

Fiscal Years	Funder	Funding Source	Amount
FY 2015-2024	Open Space Authority	Measure Q Parcel Tax	\$317
FY 2015-2024	Open Space Authority	Measure T Parcel Tax	\$23,400
FY 2015-2023	Bonneville Environmental Foundation	Grant	\$106,295
FY 2024-2025	Open Space Authority	Measure Q Parcel Tax	\$24,308
FY 2024-2025	Open Space Authority	Measure T Parcel Tax	\$8,641
FY 2024-2025	Bonneville Environmental Foundation	Grant	\$53,806
PROJECT TOTAL COST			\$216,767

FY 2024/2025 Expenditure Breakdown

Expense Category	MQ Amount	MT Amount
Payroll and Benefits	-	\$8,373
Supplies and Consumables	-	\$106
Outside Services	\$24,308	\$163
Other Services and Fees	-	-
Equipment and Maintenance	-	-
Facilities and Utilities	-	-
Acquisitions	-	-
TOTAL FOR FISCAL YEAR 2024/2025	\$24,308	\$8,641

Outside Services include: General Planning; Site Monitoring; Legal Services

Note: Information on the types of expenditures that may be classified into each expense category can be found on page 9 of this report.

EPC #2

Fisher Creek Riparian Restoration (BEF Funded)

Project
Number
P-000308

Program
Resource
Management

Status
In Progress -
On Track

Project Description

Install a wildlife-friendly fence around a half-mile section of Fisher Creek to exclude cattle on both sides of the creek and create a 50-foot wide protected riparian zone around Fisher Creek. Plant acorn and willow cuttings along the creek to enhance habitat, provide cover for wildlife, and protect water quality. Conduct maintenance and monitoring. Include school and volunteer groups for environmental education.

Final period of maintenance and monitoring will continue until January of 2026.

Expenditure Overview

Fiscal Years	Funder	Funding Source	Amount
FY 2015-2024	Open Space Authority	Measure Q Parcel Tax	\$214
FY 2015-2024	Open Space Authority	Measure T Parcel Tax	\$12,719
FY 2015-2024	Bonneville Environmental Foundation	Grant	\$109,959
FY 2024-2025	Open Space Authority	Measure Q Parcel Tax	-
FY 2024-2025	Open Space Authority	Measure T Parcel Tax	\$2,617
FY 2024-2025	Bonneville Environmental Foundation	Grant	\$6,738
PROJECT TOTAL COST			\$132,247

FY 2024/2025 Expenditure Breakdown

Expense Category	MQ Amount	MT Amount
Payroll and Benefits	-	\$2,617
Supplies and Consumables	-	-
Outside Services	-	-
Other Services and Fees	-	-
Equipment and Maintenance	-	-
Facilities and Utilities	-	-
Acquisitions	-	-
TOTAL FOR FISCAL YEAR 2024/2025	-	\$2,617

Outside Services include:

Note: Information on the types of expenditures that may be classified into each expense category can be found on page 9 of this report.

EPC #2

Fisher Creek Riparian Habitat Restoration (NFWF-Funded)

Project
Number
P-000343

Program
Resource
Management

Status
In Progress -
On Track

Project Description

Phase II of this project would build on the success of Phase I and target two additional locations along the bank of Fisher Creek for restoration, which includes removal of invasive plants, planting native species, and engaging with youth and community members.

All plantings have been completed, and FY24-25 monitoring and maintenance is complete. Maintenance and monitoring will continue until FY27-28

Expenditure Overview

Fiscal Years	Funder	Funding Source	Amount
FY 2015-2024	Open Space Authority	Measure Q Parcel Tax	-
FY 2015-2024	Open Space Authority	Measure T Parcel Tax	\$7,339
FY 2015-2024	National Fish and Wildlife Foundation	Impact-Directed Environmental Accounts	\$87,758
FY 2024-2025	Open Space Authority	Measure Q Parcel Tax	-
FY 2024-2025	Open Space Authority	Measure T Parcel Tax	\$5,350
FY 2024-2025	National Fish and Wildlife Foundation	Impact-Directed Environmental Accounts	\$91,708
PROJECT TOTAL COST			\$192,155

FY 2024/2025 Expenditure Breakdown

Expense Category	MQ Amount	MT Amount
Payroll and Benefits	-	\$5,350
Supplies and Consumables	-	-
Outside Services	-	-
Other Services and Fees	-	-
Equipment and Maintenance	-	-
Facilities and Utilities	-	-
Acquisitions	-	-
TOTAL FOR FISCAL YEAR 2024/2025	-	\$5,350

Outside Services include:

Note: Information on the types of expenditures that may be classified into each expense category can be found on page 9 of this report.

EPC #2

Llagas Creek and Pajaro River Confluence Restoration Project

Project
Number
P-000344

Program
Resource
Management

Status
In Progress -
Delayed

Project Description

The Project will plan and design an implementation project to enhance habitat conditions along lower Llagas Creek and the Pajaro River in collaboration with regional species conservation, land use, water quality, and flood protection priorities. The goals of the Project are to plan and design a project that will: (1) improve aquatic habitat and water quality along a mile of two major waterways; (2) create up to approximately 30 acres of floodplain and riparian wetland habitat; (3) maintain floodplain-compatible and regionally valuable agricultural land uses; (4) engage partners and the community in restoration; and (5) contribute to downstream water quality improvement and flood risk reduction.

Project kickoff meeting took place on 4/2/25, and baseline studies are underway. VHA is leading this project.

Expenditure Overview

Fiscal Years	Funder	Funding Source	Amount
FY 2015-2024	Open Space Authority	Measure Q Parcel Tax	-
FY 2015-2024	Open Space Authority	Measure T Parcel Tax	\$24,918
FY 2024-2025	Open Space Authority	Measure Q Parcel Tax	-
FY 2024-2025	Open Space Authority	Measure T Parcel Tax	\$2,896
PROJECT TOTAL COST			\$27,813

FY 2024/2025 Expenditure Breakdown

Expense Category	MQ Amount	MT Amount
Payroll and Benefits	-	\$2,896
Supplies and Consumables	-	-
Outside Services	-	-
Other Services and Fees	-	-
Equipment and Maintenance	-	-
Facilities and Utilities	-	-
Acquisitions	-	-
TOTAL FOR FISCAL YEAR 2024/2025	-	\$2,896

Outside Services include:

Note: Information on the types of expenditures that may be classified into each expense category can be found on page 9 of this report.

EPC #2

CVCAMP Restoration Pilot Project

Project
Number
P-000359

Program
Capital
Improvement

Status
In Progress -
On Track

Project Description

The "stepping stone" restoration project aims to increase the water retention period of North Laguna Seca through low-cost restoration actions that can be permitted easily and inform future, larger phases of restoration that are the focus of the Coyote Valley Master Planning Process.

Implementation of amended Phase I project is now complete. Future phase(s) will be planned and implemented in FY 25-26.

Expenditure Overview

Fiscal Years	Funder	Funding Source	Amount
FY 2015-2024	Open Space Authority	Measure Q Parcel Tax	\$27,257
FY 2015-2024	Open Space Authority	Measure T Parcel Tax	\$14,398
FY 2024-2025	Open Space Authority	Measure Q Parcel Tax	\$35,613
FY 2024-2025	Open Space Authority	Measure T Parcel Tax	\$52,719
PROJECT TOTAL COST			\$129,987

FY 2024/2025 Expenditure Breakdown

Expense Category	MQ Amount	MT Amount
Payroll and Benefits	-	\$51,228
Supplies and Consumables	-	\$49
Outside Services	\$34,407	\$1,443
Other Services and Fees	\$1,206	-
Equipment and Maintenance	-	-
Facilities and Utilities	-	-
Acquisitions	-	-
TOTAL FOR FISCAL YEAR 2024/2025	\$35,613	\$52,719

Outside Services include: Construction; Other Design/Engineering; General Planning; Environmental Review; Legal Services

Note: Information on the types of expenditures that may be classified into each expense category can be found on page 9 of this report.

(for printing purposes – this page intentionally left blank)

3 C P E



EXPENDITURE PLAN CATEGORY #3

The purpose of this program is to maintain existing open space preserves; safeguard the health of natural areas and wildlife habitat; reduce the risk of wildfires; provide more hiking and walking trails; and increase opportunities for environmental education experiences.



(for printing purposes – this page intentionally left blank)

EPC #3

Habitat Stewardship Program

Project
Number
K-000373

Program
Operations

Status
Ongoing

Project Description

The Natural Resources Department (NRS) monitors, stewards, and restores the physical resources and biological communities that support the resilient habitats and working landscapes on Authority lands. Habitat stewardship includes the Authority's conservation grazing, integrated pest management, fuels reduction, and restoration plantings. Habitat stewardship focuses on annual stewardship work, hands on restoration, and monitoring of the Authority's important habitats and working lands.

Expenditure Overview

Fiscal Years	Funder	Funding Source	Amount
FY 2015-2024	Open Space Authority	Measure Q Parcel Tax	-
FY 2015-2024	Open Space Authority	Measure T Parcel Tax	\$136,221
FY 2024-2025	Open Space Authority	Measure Q Parcel Tax	-
FY 2024-2025	Open Space Authority	Measure T Parcel Tax	\$158,728
PROJECT TOTAL COST			\$294,949

FY 2024/2025 Expenditure Breakdown

Expense Category	MQ Amount	MT Amount
Payroll and Benefits	-	\$142,509
Supplies and Consumables	-	\$289
Outside Services	-	\$3,275
Other Services and Fees	-	\$730
Equipment and Maintenance	-	\$11,925
Facilities and Utilities	-	-
Acquisitions	-	-
TOTAL FOR FISCAL YEAR 2024/2025	-	\$158,728

Outside Services include: General Planning; Site Monitoring; IPM Pest Control; Environmental Reviews

Note: Information on the types of expenditures that may be classified into each expense category can be found on page 9 of this report.

EPC #3

Agriculture Program

Project
Number
K-000374

Program
Operations

Status
Ongoing

Project Description

The Authority's Agricultural Program includes supporting farmers and growers on Authority properties, protecting agriculture throughout the region, and helping agriculture thrive in our region. Local food, healthy soils, corridors for wildlife, and habitat for pollinators are all important parts of the Authority's climate-smart Agricultural Program.

Expenditure Overview

Fiscal Years	Funder	Funding Source	Amount
FY 2015-2024	Open Space Authority	Measure Q Parcel Tax	-
FY 2015-2024	Open Space Authority	Measure T Parcel Tax	\$29,479
FY 2024-2025	Open Space Authority	Measure Q Parcel Tax	-
FY 2024-2025	Open Space Authority	Measure T Parcel Tax	\$88,113
PROJECT TOTAL COST			\$117,592

FY 2024/2025 Expenditure Breakdown

Expense Category	MQ Amount	MT Amount
Payroll and Benefits	-	\$81,765
Supplies and Consumables	-	\$487
Outside Services	-	\$5,811
Other Services and Fees	-	\$50
Equipment and Maintenance	-	-
Facilities and Utilities	-	-
Acquisitions	-	-
TOTAL FOR FISCAL YEAR 2024/2025	-	\$88,113

Outside Services include: Legal Services

Note: Information on the types of expenditures that may be classified into each expense category can be found on page 9 of this report.

EPC #3

Coyote Valley Open Space Preserve Improved North Meadow Public Access

Project
Number
P-000032

Program
Capital
Improvement

Status
In Progress -
On Track

Project Description

In 2010, the Authority established the 348-acre Coyote Valley Open Space Preserve. The Preserve was opened to the public on June 27, 2015 with public access improvements that included vehicle and equestrian parking areas, picnic areas, restroom facility and a 4 mile multi-use trail. This project will provide an ADA accessible trail and public amenity areas along the Heart's Delight Trail in the North Meadow.

Coordinating with Santa Clara County for HUD funding administration and environmental review under NEPA. Permitting initiated. Bid documents forthcoming, once permitting is complete.

Expenditure Overview

Fiscal Years	Funder	Funding Source	Amount
FY 2015-2024	Open Space Authority	Measure Q Parcel Tax	\$426,452
FY 2015-2024	Open Space Authority	Measure T Parcel Tax	\$27,468
FY 2015-2024	Valley Water	Safe, Clean Water and Natural Flood Protection Program	\$40,000
FY 2024-2025	Open Space Authority	Measure Q Parcel Tax	\$106,860
FY 2024-2025	Open Space Authority	Measure T Parcel Tax	\$96,520
PROJECT TOTAL COST			\$697,300

FY 2024/2025 Expenditure Breakdown

Expense Category	MQ Amount	MT Amount
Payroll and Benefits	-	\$94,207
Supplies and Consumables	-	-
Outside Services	\$93,513	\$2,313
Other Services and Fees	\$13,347	-
Equipment and Maintenance	-	-
Facilities and Utilities	-	-
Acquisitions	-	-
TOTAL FOR FISCAL YEAR 2024/2025	\$106,860	\$96,520

Outside Services include: Prime Design; CEQA; Prime Engineering; Design and Content Services; Legal Services

Note: Information on the types of expenditures that may be classified into each expense category can be found on page 9 of this report.

EPC #3

Coyote Valley Open Space Preserve Equestrian Lot Improvements

Project
Number
P-000035

Program
Capital
Improvement

Status
Completed

Project Description

Resolve seasonal drainage issues at Coyote Valley Open Space Preserve's equestrian parking lot surfacing to ensure year-round access for visitors.

Expenditure Overview

Fiscal Years	Funder	Funding Source	Amount
FY 2015-2024	Open Space Authority	Measure Q Parcel Tax	-
FY 2015-2024	Open Space Authority	Measure T Parcel Tax	\$2,116
FY 2024-2025	Open Space Authority	Measure Q Parcel Tax	-
FY 2024-2025	Open Space Authority	Measure T Parcel Tax	\$39,906
PROJECT TOTAL COST			\$42,022

FY 2024/2025 Expenditure Breakdown

Expense Category	MQ Amount	MT Amount
Payroll and Benefits	-	\$1,215
Supplies and Consumables	-	-
Outside Services	-	\$38,691
Other Services and Fees	-	-
Equipment and Maintenance	-	-
Facilities and Utilities	-	-
Acquisitions	-	-
TOTAL FOR FISCAL YEAR 2024/2025	-	\$39,906

Outside Services include: Construction

Note: Information on the types of expenditures that may be classified into each expense category can be found on page 9 of this report.

EPC #3

Rancho Cañada del Oro Llagas Creek Bridge and Day Use Area

Project
Number
P-000036

Program
Capital
Improvement

Status
Completed

Project Description

Development of a plan for a new ADA accessible interpretative day-use-area accessed via a pedestrian bridge crossing over Llagas Creek. Enhance public event and operational access to Blair Ranch area within the Rancho Cañada del Oro Open Space Preserve.

Expenditure Overview

Fiscal Years	Funder	Funding Source	Amount
FY 2015-2024	Open Space Authority	Measure Q Parcel Tax	\$575,732
FY 2015-2024	Open Space Authority	Measure T Parcel Tax	\$109,401
FY 2015-2023	CA Natural Resources Agency	2018 Parks Bond Act Per Capita Grant Program	\$1,120,020
FY 2024-2025	Open Space Authority	Measure Q Parcel Tax	\$2,106
FY 2024-2025	Open Space Authority	Measure T Parcel Tax	\$5,394
PROJECT TOTAL COST			\$1,812,653

FY 2024/2025 Expenditure Breakdown

Expense Category	MQ Amount	MT Amount
Payroll and Benefits	-	\$5,394
Supplies and Consumables	-	-
Outside Services	\$1,524	-
Other Services and Fees	\$582	-
Equipment and Maintenance	-	-
Facilities and Utilities	-	-
Acquisitions	-	-
TOTAL FOR FISCAL YEAR 2024/2025	\$2,106	\$5,394

Outside Services include: Surveys and Investigations

Note: Information on the types of expenditures that may be classified into each expense category can be found on page 9 of this report.

Coyote Valley Open Space Preserve Operations & Maintenance

Project
Number
P-000087

Program
Operations

Status
Ongoing

Project Description

The daily operation, management and stewardship of the Authority's lands and public access facilities includes trail and preserve maintenance, resource management such as grazing management, invasive plant management, site monitoring, resource and habitat enhancement, monitoring and maintaining capital structures, and careful stewardship and reporting for contract land management and mitigation.

Coyote Valley Open Space Preserve is located at the western edge of the Coyote Valley, which provides a greenbelt between San Jose and Morgan Hill. While only 20 miles from downtown San Jose, this 348-acre preserve offers a true rural and wilderness experience.

Coyote Valley Open Space Preserve is open to the public, with over 45,000 visitors annually. The following amenities are managed and maintained by the Authority:

- 4 miles of trail
- Staging area
- Picnic tables
- Park benches
- Restrooms
- Equestrian Lot

Expenditure Overview

Fiscal Years	Funder	Funding Source	Amount
FY 2015-2024	Open Space Authority	Measure Q Parcel Tax	\$568,256
FY 2015-2024	Open Space Authority	Measure T Parcel Tax	\$808,694
FY 2024-2025	Open Space Authority	Measure Q Parcel Tax	-
FY 2024-2025	Open Space Authority	Measure T Parcel Tax	\$448,195
PROJECT TOTAL COST			\$1,825,145

FY 2024/2025 Expenditure Breakdown

Expense Category	MQ Amount	MT Amount
Payroll and Benefits	-	\$256,743
Supplies and Consumables	-	\$99,589
Outside Services	-	\$31,846
Other Services and Fees	-	-
Equipment and Maintenance	-	\$43,856
Facilities and Utilities	-	\$16,161
Acquisitions	-	-
TOTAL FOR FISCAL YEAR 2024/2025	-	\$448,195

Outside Services include: Public Access Maintenance; Vegetation Mgmt; Grazing; Wildlife Mgmt

Note: Information on the types of expenditures that may be classified into each expense category can be found on page 9 of this report.

EPC #3

Sierra Vista Open Space Preserve Operations & Maintenance

Project
Number
P-000088

Program
Operations

Status
Ongoing

Project Description

The daily operation, management and stewardship of the Authority's lands and public access facilities includes trail and preserve maintenance, resource management such as grazing management, invasive plant management, site monitoring, resource and habitat enhancement, monitoring and maintaining capital structures, and careful stewardship and reporting for contract land management and mitigation.

This 1,611-acre preserve in the Eastern foothills of Santa Clara County offers sweeping views of the Valley and the opportunity to stroll through diverse landscapes including oak woodlands, rolling grassland, and chaparral communities. Perched above Alum Rock Park, the area provides watershed protection for Penitencia Creek and is home to a number of protected wildlife species including the California red-legged frog, California tiger salamander, American badger, and Western burrowing owl and other species such as golden eagle, mountain lion, bobcat, and gray fox.

Sierra Vista Open Space Preserve is open to the public, with over 100,000 visitors annually. The following amenities are managed and maintained by the Authority:

- 11.5 miles of trail
- Staging area
- Picnic tables
- Park benches
- Equestrian Lot

Expenditure Overview

Fiscal Years	Funder	Funding Source	Amount
FY 2015-2024	Open Space Authority	Measure Q Parcel Tax	\$1,707,772
FY 2015-2024	Open Space Authority	Measure T Parcel Tax	\$2,063,358
FY 2024-2025	Open Space Authority	Measure Q Parcel Tax	-
FY 2024-2025	Open Space Authority	Measure T Parcel Tax	\$605,075
PROJECT TOTAL COST			\$4,376,205

FY 2024/2025 Expenditure Breakdown

Expense Category	MQ Amount	MT Amount
Payroll and Benefits	-	\$516,744
Supplies and Consumables	-	\$60,773
Outside Services	-	\$3,218
Other Services and Fees	-	-
Equipment and Maintenance	-	\$20,314
Facilities and Utilities	-	\$4,026
Acquisitions	-	-
TOTAL FOR FISCAL YEAR 2024/2025	-	\$605,075

Outside Services include: Design and Content Services; Grazing; Wildlife Mgmt; Media Services

Note: Information on the types of expenditures that may be classified into each expense category can be found on page 9 of this report.

EPC #3

Maáyan 'Ooyákma Coyote Ridge Open Space Preserve Operations & Maintenance

Project
Number
P-000089

Program
Operations

Status
Ongoing

Project Description

The daily operation, management and stewardship of the Authority's lands and public access facilities includes trail and preserve maintenance, resource management such as grazing management, invasive plant management, site monitoring, resource and habitat enhancement, monitoring and maintaining capital structures, and careful stewardship and reporting for contract land management and mitigation.

The Coyote Ridge property is located in the Diablo Range foothills east of Hwy 101 in southern Santa Clara County. The 1,859-acre property boasts rare serpentine grassland, which is vital to the threatened Bay checkerspot butterfly and Metcalf Canyon jewelflower, and provides critical habitat for the California red-legged frog, California tiger salamander, Tule elk, Western burrowing owls, golden eagles, and many other raptors.

Coyote Ridge Open Space Preserve offers docent-led hikes.

Expenditure Overview

Fiscal Years	Funder	Funding Source	Amount
FY 2015-2024	Open Space Authority	Measure Q Parcel Tax	\$132,209
FY 2015-2024	Open Space Authority	Measure T Parcel Tax	\$580,811
FY 2024-2025	Open Space Authority	Measure Q Parcel Tax	-
FY 2024-2025	Open Space Authority	Measure T Parcel Tax	\$364,896
PROJECT TOTAL COST			\$1,077,916

FY 2024/2025 Expenditure Breakdown

Expense Category	MQ Amount	MT Amount
Payroll and Benefits	-	\$315,693
Supplies and Consumables	-	\$18,255
Outside Services	-	\$9,494
Other Services and Fees	-	\$2,293
Equipment and Maintenance	-	\$18,732
Facilities and Utilities	-	\$429
Acquisitions	-	-
TOTAL FOR FISCAL YEAR 2024/2025	-	\$364,896

Outside Services include: Public Access Maintenance; Vegetation Mgmt; Grazing

Note: Information on the types of expenditures that may be classified into each expense category can be found on page 9 of this report.

EPC #3

Rancho Cañada del Oro Open Space Preserve Operations & Maintenance

Project
Number
P-000090

Program
Operations

Status
Ongoing

Project Description

The daily operation, management and stewardship of the Authority's lands and public access facilities includes trail and preserve maintenance, resource management such as grazing management, invasive plant management, site monitoring, resource and habitat enhancement, monitoring and maintaining capital structures, and careful stewardship and reporting for contract land management and mitigation.

Rancho Cañada del Oro Open Space Preserve is in the foothills of the Santa Cruz Mountains in South Santa Clara County. A glistening creek runs along the Llagas Meadow and deer, bobcat, mountain lions, and other wildlife roam throughout the 4,774-acre preserve. In the spring months, wildflowers adorn the meadow and hillsides.

The preserve is open to the public, with over 35,000 visitors annually. The following amenities are managed and maintained by the Authority:

- 8.3 miles of trail
- Staging area
- Picnic tables
- Park benches
- Restrooms
- Equestrian Lot
- Overflow Parking Lot

Expenditure Overview

Fiscal Years	Funder	Funding Source	Amount
FY 2015-2024	Open Space Authority	Measure Q Parcel Tax	\$1,129,017
FY 2015-2024	Open Space Authority	Measure T Parcel Tax	\$813,459
FY 2024-2025	Open Space Authority	Measure Q Parcel Tax	-
FY 2024-2025	Open Space Authority	Measure T Parcel Tax	\$344,973
PROJECT TOTAL COST			\$2,287,449

FY 2024/2025 Expenditure Breakdown

Expense Category	MQ Amount	MT Amount
Payroll and Benefits	-	\$240,158
Supplies and Consumables	-	\$58,895
Outside Services	-	\$5,013
Other Services and Fees	-	-
Equipment and Maintenance	-	\$36,106
Facilities and Utilities	-	\$4,802
Acquisitions	-	-
TOTAL FOR FISCAL YEAR 2024/2025	-	\$344,973

Outside Services include: Vegetation Mgmt; Grazing

Note: Information on the types of expenditures that may be classified into each expense category can be found on page 9 of this report.

EPC #3

Diablo Foothills Preserve Operations & Maintenance

Project
Number
P-000091

Program
Operations

Status
Ongoing

Project Description

The daily operation, management and stewardship of the Authority's lands and public access facilities includes trail and preserve maintenance, resource management such as grazing management, invasive plant management, site monitoring, resource and habitat enhancement, monitoring and maintaining capital structures, and careful stewardship and reporting for contract land management and mitigation.

This 819-acre preserve has a half acre pond and several creeks that are part of the primary watershed for the Pajaro River, which flows toward Monterey Bay. The preserve also offers habitat for California red-legged frogs and California tiger salamanders, and features Coast Live Oak and annual grasslands.

Diablo Foothills Open Space Preserve offers docent-led hikes.

Expenditure Overview

Fiscal Years	Funder	Funding Source	Amount
FY 2015-2024	Open Space Authority	Measure Q Parcel Tax	\$163,589
FY 2015-2024	Open Space Authority	Measure T Parcel Tax	\$80,764
FY 2024-2025	Open Space Authority	Measure Q Parcel Tax	-
FY 2024-2025	Open Space Authority	Measure T Parcel Tax	\$16,936
PROJECT TOTAL COST			\$261,288

FY 2024/2025 Expenditure Breakdown

Expense Category	MQ Amount	MT Amount
Payroll and Benefits	-	\$13,227
Supplies and Consumables	-	\$3,641
Outside Services	-	-
Other Services and Fees	-	-
Equipment and Maintenance	-	\$67
Facilities and Utilities	-	-
Acquisitions	-	-
TOTAL FOR FISCAL YEAR 2024/2025	-	\$16,936

Outside Services include:

Note: Information on the types of expenditures that may be classified into each expense category can be found on page 9 of this report.

EPC #3

Little Uvas Preserve Operations & Maintenance

Project
Number
P-000092

Program
Operations

Status
Ongoing

Project Description

The daily operation, management and stewardship of the Authority's lands and public access facilities includes trail and preserve maintenance, resource management such as grazing management, invasive plant management, site monitoring, resource and habitat enhancement, monitoring and maintaining capital structures, and careful stewardship and reporting for contract land management and mitigation.

Located in the Southern Santa Cruz Mountains, Little Uvas Creek consists primarily of serpentine hardwoods and grasslands, grey pine, and oak woodland. A total of five perennial ponds are located on the 285-acre property.

Little Uvas Open Space Preserve offers docent-led hikes.

Expenditure Overview

Fiscal Years	Funder	Funding Source	Amount
FY 2015-2024	Open Space Authority	Measure Q Parcel Tax	\$36,106
FY 2015-2024	Open Space Authority	Measure T Parcel Tax	\$18,213
FY 2024-2025	Open Space Authority	Measure Q Parcel Tax	-
FY 2024-2025	Open Space Authority	Measure T Parcel Tax	\$4,244
PROJECT TOTAL COST			\$58,562

FY 2024/2025 Expenditure Breakdown

Expense Category	MQ Amount	MT Amount
Payroll and Benefits	-	\$4,209
Supplies and Consumables	-	\$34
Outside Services	-	-
Other Services and Fees	-	-
Equipment and Maintenance	-	-
Facilities and Utilities	-	-
Acquisitions	-	-
TOTAL FOR FISCAL YEAR 2024/2025	-	\$4,244

Outside Services include:

Note: Information on the types of expenditures that may be classified into each expense category can be found on page 9 of this report.

EPC #3

Palassou Ridge Preserve Operations & Maintenance

Project
Number
P-000093

Program
Operations

Status
Ongoing

Project Description

The daily operation, management and stewardship of the Authority's lands and public access facilities includes trail and preserve maintenance, resource management such as grazing management, invasive plant management, site monitoring, resource and habitat enhancement, monitoring and maintaining capital structures, and careful stewardship and reporting for contract land management and mitigation.

Palassou Ridge connects Coyote Lake-Harvey Bear Ranch County Park to Henry Coe State Park. This 3,524-acre preserve has deep, wooded canyons and rolling grassy hills as well as important habitat for California red-legged frogs and California tiger salamanders. The property contains a historic stone house and was a campsite for the Anza Expedition.

Palassou Ridge Open Space Preserve offers docent-led hikes.

Expenditure Overview

Fiscal Years	Funder	Funding Source	Amount
FY 2015-2024	Open Space Authority	Measure Q Parcel Tax	\$126,712
FY 2015-2024	Open Space Authority	Measure T Parcel Tax	\$37,725
FY 2024-2025	Open Space Authority	Measure Q Parcel Tax	-
FY 2024-2025	Open Space Authority	Measure T Parcel Tax	\$12,990
PROJECT TOTAL COST			\$177,427

FY 2024/2025 Expenditure Breakdown

Expense Category	MQ Amount	MT Amount
Payroll and Benefits	-	\$10,351
Supplies and Consumables	-	\$1,976
Outside Services	-	-
Other Services and Fees	-	-
Equipment and Maintenance	-	\$630
Facilities and Utilities	-	\$32
Acquisitions	-	-
TOTAL FOR FISCAL YEAR 2024/2025	-	\$12,990

Outside Services include:

Note: Information on the types of expenditures that may be classified into each expense category can be found on page 9 of this report.

EPC #3

North Pajaro River Agricultural Preserve Operations & Maintenance

Project
Number
P-000095

Program
Operations

Status
Ongoing

Project Description

The daily operation, management and stewardship of the Authority's lands and public access facilities includes trail and preserve maintenance, resource management such as grazing management, invasive plant management, site monitoring, resource and habitat enhancement, monitoring and maintaining capital structures, and careful stewardship and reporting for contract land management and mitigation.

The North Pajaro River Agricultural Preserve contains several historical structures. The 100-acre preserve is in agricultural production and is important to protecting the working lands and agricultural heritage of Santa Clara County. 21 acres of the preserve are in active restoration to provide a natural buffer along wetland areas and enhance native vegetation within a historic flood plain. The Pajaro River is a critical wildlife corridor connecting the Diablo and Santa Cruz Mountains and provides important riparian habitat.

North Pajaro River Agricultural Preserve does not offer public access at this time; however, frequent land stewards events are hosted by the Authority at this Preserve.

Expenditure Overview

Fiscal Years	Funder	Funding Source	Amount
FY 2015-2024	Open Space Authority	Measure Q Parcel Tax	\$201,810
FY 2015-2024	Open Space Authority	Measure T Parcel Tax	\$70,735
FY 2024-2025	Open Space Authority	Measure Q Parcel Tax	-
FY 2024-2025	Open Space Authority	Measure T Parcel Tax	\$17,488
PROJECT TOTAL COST			\$290,032

FY 2024/2025 Expenditure Breakdown

Expense Category	MQ Amount	MT Amount
Payroll and Benefits	-	\$13,891
Supplies and Consumables	-	\$1,522
Outside Services	-	-
Other Services and Fees	-	-
Equipment and Maintenance	-	\$2,075
Facilities and Utilities	-	-
Acquisitions	-	-
TOTAL FOR FISCAL YEAR 2024/2025	-	\$17,488

Outside Services include:

Note: Information on the types of expenditures that may be classified into each expense category can be found on page 9 of this report.

EPC #3

Santa Teresa Foothills Preserve Operations & Maintenance

Project
Number
P-000096

Program
Operations

Status
Ongoing

Project Description

The daily operation, management and stewardship of the Authority's lands and public access facilities includes trail and preserve maintenance, resource management such as grazing management, invasive plant management, site monitoring, resource and habitat enhancement, monitoring and maintaining capital structures, and careful stewardship and reporting for contract land management and mitigation.

Located on Santa Teresa Ridge in San Jose's Santa Teresa neighborhood, this 61-acre area is a gateway to 1,500 acres of open space land. It provides sweeping views across the Almaden Valley to downtown San Jose and the Mt. Hamilton Range.

Santa Teresa Foothills Open Space Preserve does not offer public access at this time.

Expenditure Overview

Fiscal Years	Funder	Funding Source	Amount
FY 2015-2024	Open Space Authority	Measure Q Parcel Tax	\$45,787
FY 2015-2024	Open Space Authority	Measure T Parcel Tax	\$14,692
FY 2024-2025	Open Space Authority	Measure Q Parcel Tax	-
FY 2024-2025	Open Space Authority	Measure T Parcel Tax	\$5,658
PROJECT TOTAL COST			\$66,137

FY 2024/2025 Expenditure Breakdown

Expense Category	MQ Amount	MT Amount
Payroll and Benefits	-	\$4,131
Supplies and Consumables	-	\$162
Outside Services	-	\$1,365
Other Services and Fees	-	-
Equipment and Maintenance	-	-
Facilities and Utilities	-	-
Acquisitions	-	-
TOTAL FOR FISCAL YEAR 2024/2025	-	\$5,658

Outside Services include: Legal Services

Note: Information on the types of expenditures that may be classified into each expense category can be found on page 9 of this report.

EPC #3

Upper Uvas Preserve Operations & Maintenance

Project
Number
P-000097

Program
Operations

Status
Ongoing

Project Description

The daily operation, management and stewardship of the Authority's lands and public access facilities includes trail and preserve maintenance, resource management such as grazing management, invasive plant management, site monitoring, resource and habitat enhancement, monitoring and maintaining capital structures, and careful stewardship and reporting for contract land management and mitigation.

Part of the Santa Cruz Mountains, the headwaters of Uvas Creek drain through the mountain's slopes, providing high-quality aquatic habitat and water supply. Douglas fir and Gray pines are also found on this 1,253-acre rugged terrain.

Upper Uvas Open Space Preserve does not offer public access at this time.

Expenditure Overview

Fiscal Years	Funder	Funding Source	Amount
FY 2015-2024	Open Space Authority	Measure Q Parcel Tax	\$24,868
FY 2015-2024	Open Space Authority	Measure T Parcel Tax	\$7,318
FY 2024-2025	Open Space Authority	Measure Q Parcel Tax	-
FY 2024-2025	Open Space Authority	Measure T Parcel Tax	\$1,688
PROJECT TOTAL COST			\$33,874

FY 2024/2025 Expenditure Breakdown

Expense Category	MQ Amount	MT Amount
Payroll and Benefits	-	\$1,688
Supplies and Consumables	-	-
Outside Services	-	-
Other Services and Fees	-	-
Equipment and Maintenance	-	-
Facilities and Utilities	-	-
Acquisitions	-	-
TOTAL FOR FISCAL YEAR 2024/2025	-	\$1,688

Outside Services include:

Note: Information on the types of expenditures that may be classified into each expense category can be found on page 9 of this report.

EPC #3

Mount Chual Preserve Operations & Maintenance

Project
Number
P-000098

Program
Operations

Status
Ongoing

Project Description

The daily operation, management and stewardship of the Authority's lands and public access facilities includes trail and preserve maintenance, resource management such as grazing management, invasive plant management, site monitoring, resource and habitat enhancement, monitoring and maintaining capital structures, and careful stewardship and reporting for contract land management and mitigation.

As the third highest peak in the Santa Cruz Mountains, this 632-acre preserve has panoramic views of the Diablo Range with chaparral and Bay Laurel plant communities. It also contains the headwaters for Llagas Creek which provides essential water supply and aquatic habitat for fish and amphibians.

Mount Chual Open Space Preserve does not offer public access at this time.

Expenditure Overview

Fiscal Years	Funder	Funding Source	Amount
FY 2015-2024	Open Space Authority	Measure Q Parcel Tax	\$29,671
FY 2015-2024	Open Space Authority	Measure T Parcel Tax	\$12,644
FY 2024-2025	Open Space Authority	Measure Q Parcel Tax	-
FY 2024-2025	Open Space Authority	Measure T Parcel Tax	\$1,849
PROJECT TOTAL COST			\$44,165

FY 2024/2025 Expenditure Breakdown

Expense Category	MQ Amount	MT Amount
Payroll and Benefits	-	\$1,676
Supplies and Consumables	-	\$173
Outside Services	-	-
Other Services and Fees	-	-
Equipment and Maintenance	-	-
Facilities and Utilities	-	-
Acquisitions	-	-
TOTAL FOR FISCAL YEAR 2024/2025	-	\$1,849

Outside Services include:

Note: Information on the types of expenditures that may be classified into each expense category can be found on page 9 of this report.

EPC #3

El Toro Preserve Operations & Maintenance

Project
Number
P-000099

Program
Operations

Status
Ongoing

Project Description

The daily operation, management and stewardship of the Authority's lands and public access facilities includes trail and preserve maintenance, resource management such as grazing management, invasive plant management, site monitoring, resource and habitat enhancement, monitoring and maintaining capital structures, and careful stewardship and reporting for contract land management and mitigation.

Nestled above Morgan Hill, in the Santa Cruz Mountains, this 58-acre hillside is home to Coast Live Oak, California bay woodlands, chaparral, and grasslands.

El Toro Open Space Preserve does not offer public access at this time.

Expenditure Overview

Fiscal Years	Funder	Funding Source	Amount
FY 2015-2024	Open Space Authority	Measure Q Parcel Tax	\$71,695
FY 2015-2024	Open Space Authority	Measure T Parcel Tax	\$10,714
FY 2024-2025	Open Space Authority	Measure Q Parcel Tax	-
FY 2024-2025	Open Space Authority	Measure T Parcel Tax	\$15,346
PROJECT TOTAL COST			\$97,755

FY 2024/2025 Expenditure Breakdown

Expense Category	MQ Amount	MT Amount
Payroll and Benefits	-	\$13,578
Supplies and Consumables	-	\$1,768
Outside Services	-	-
Other Services and Fees	-	-
Equipment and Maintenance	-	-
Facilities and Utilities	-	-
Acquisitions	-	-
TOTAL FOR FISCAL YEAR 2024/2025	-	\$15,346

Outside Services include:

Note: Information on the types of expenditures that may be classified into each expense category can be found on page 9 of this report.

EPC #3

South Pajaro River Agricultural Preserve Operations & Maintenance

Project
Number
P-000202

Program
Operations

Status
Ongoing

Project Description

The daily operation, management and stewardship of the Authority's lands and public access facilities includes trail and preserve maintenance, resource management such as grazing management, invasive plant management, site monitoring, resource and habitat enhancement, monitoring and maintaining capital structures, and careful stewardship and reporting for contract land management and mitigation.

The 184-acre preserve has been in continuous agricultural production since at least 1939 and is important to protecting the working lands and agricultural heritage of Santa Clara County. The Pajaro River is a critical wildlife corridor connecting the Diablo and Santa Cruz Mountains and provides important riparian habitat. 10 acres of the preserve is part of an active restoration to provide a natural buffer from agricultural practices along the north bank of the Pajaro River.

South Pajaro River Agricultural Preserve does not offer public access at this time; however, frequent land stewards events are hosted by the Authority at this Preserve.

Expenditure Overview

Fiscal Years	Funder	Funding Source	Amount
FY 2015-2024	Open Space Authority	Measure Q Parcel Tax	\$17,709
FY 2015-2024	Open Space Authority	Measure T Parcel Tax	\$60,024
FY 2024-2025	Open Space Authority	Measure Q Parcel Tax	-
FY 2024-2025	Open Space Authority	Measure T Parcel Tax	\$14,605
PROJECT TOTAL COST			\$92,338

FY 2024/2025 Expenditure Breakdown

Expense Category	MQ Amount	MT Amount
Payroll and Benefits	-	\$2,268
Supplies and Consumables	-	\$270
Outside Services	-	\$12,066
Other Services and Fees	-	-
Equipment and Maintenance	-	-
Facilities and Utilities	-	-
Acquisitions	-	-
TOTAL FOR FISCAL YEAR 2024/2025	-	\$14,605

Outside Services include: Agricultural Improvements

Note: Information on the types of expenditures that may be classified into each expense category can be found on page 9 of this report.

EPC #3

Interp & Environmental Education Program

Project
Number
P-000247

Program
Environmental
Education

Status
Ongoing

Project Description

The development, delivery and management of environmental education programs. This program aims to promote the protection of water, wildlife, and working lands through public education about the Authority's adaptive management of natural resources like watersheds, wildlife connectivity, and the protection of endangered species.

Expenditure Overview

Fiscal Years	Funder	Funding Source	Amount
FY 2015-2024	Open Space Authority	Measure Q Parcel Tax	\$572,145
FY 2015-2024	Open Space Authority	Measure T Parcel Tax	\$587,827
FY 2024-2025	Open Space Authority	Measure Q Parcel Tax	-
FY 2024-2025	Open Space Authority	Measure T Parcel Tax	\$359,639
PROJECT TOTAL COST			\$1,519,612

FY 2024/2025 Expenditure Breakdown

Expense Category	MQ Amount	MT Amount
Payroll and Benefits	-	\$214,971
Supplies and Consumables	-	\$2,884
Outside Services	-	\$48,906
Other Services and Fees	-	\$85,109
Equipment and Maintenance	-	-
Facilities and Utilities	-	\$7,769
Acquisitions	-	-
TOTAL FOR FISCAL YEAR 2024/2025	-	\$359,639

Outside Services include: Media Services; Environmental Education Partnerships

Note: Information on the types of expenditures that may be classified into each expense category can be found on page 9 of this report.

EPC #3

Volunteer Program

Project
Number
P-000248

Program
Community
Engagement

Status
Ongoing

Project Description

Volunteer programs, especially those that engage participants in projects on Authority preserve lands, build a deeper understanding of the region's natural systems, build strong relationships between the Authority and the communities where the projects occur, and build a sense of ownership of the resource improvements by the participants who contributed to those improvements. The Monthly Land Stewards Program is designed to augment Authority Field staff capacity by providing intensive work project assistance for priority projects, saving the Authority significant labor costs by achieving work results without hiring additional staff.

Preliminary implementation will include offering one event each month (weather permitting), planned in close coordination with the Authority's Field Operations staff who identify the highest priority needs on Authority lands.

Expenditure Overview

Fiscal Years	Funder	Funding Source	Amount
FY 2015-2024	Open Space Authority	Measure Q Parcel Tax	\$197,933
FY 2015-2024	Open Space Authority	Measure T Parcel Tax	\$282,673
FY 2024-2025	Open Space Authority	Measure Q Parcel Tax	-
FY 2024-2025	Open Space Authority	Measure T Parcel Tax	\$116,786
PROJECT TOTAL COST			\$597,392

FY 2024/2025 Expenditure Breakdown

Expense Category	MQ Amount	MT Amount
Payroll and Benefits	-	\$106,419
Supplies and Consumables	-	\$3,601
Outside Services	-	-
Other Services and Fees	-	\$6,766
Equipment and Maintenance	-	-
Facilities and Utilities	-	-
Acquisitions	-	-
TOTAL FOR FISCAL YEAR 2024/2025	-	\$116,786

Outside Services include:

Note: Information on the types of expenditures that may be classified into each expense category can be found on page 9 of this report.

EPC #3

North Coyote Valley Operations & Maintenance

Project
Number
P-000267

Program
Operations

Status
Ongoing

Project Description

The daily operation, management and stewardship of the Authority's lands and public access facilities includes trail and preserve maintenance, resource management such as grazing management, invasive plant management, site monitoring, resource and habitat enhancement, monitoring, and maintaining capital structures.

North Coyote Valley Conservation Area is located in the north west area of Coyote Valley and comprises of the Laguna Seca and upland habitat providing habitat for migratory birds and other wildlife species such as American badger, coyote, bobcat, etc.

North Coyote Valley Conservation Area offers docent-led hikes, land steward events, and public access events.

Expenditure Overview

Fiscal Years	Funder	Funding Source	Amount
FY 2015-2024	Open Space Authority	Measure Q Parcel Tax	\$193,496
FY 2015-2024	Open Space Authority	Measure T Parcel Tax	\$168,965
FY 2024-2025	Open Space Authority	Measure Q Parcel Tax	-
FY 2024-2025	Open Space Authority	Measure T Parcel Tax	\$52,107
PROJECT TOTAL COST			\$414,568

FY 2024/2025 Expenditure Breakdown

Expense Category	MQ Amount	MT Amount
Payroll and Benefits	-	\$41,109
Supplies and Consumables	-	\$10,862
Outside Services	-	-
Other Services and Fees	-	-
Equipment and Maintenance	-	\$136
Facilities and Utilities	-	-
Acquisitions	-	-
TOTAL FOR FISCAL YEAR 2024/2025	-	\$52,107

Outside Services include:

Note: Information on the types of expenditures that may be classified into each expense category can be found on page 9 of this report.

EPC #3

Tulare Meadows Operations & Maintenance

Project
Number
P-000268

Program
Operations

Status
Ongoing

Project Description

The daily operation, management and stewardship of the Authority's lands and public access facilities includes trail and preserve maintenance, resource management such as grazing management, invasive plant management, site monitoring, resource and habitat enhancement, monitoring, and maintaining capital structures.

Tulare Meadows is located in the north east area of Coyote Valley and encompasses an active agricultural operation as well as the maintenance of several structures.

Tulare Meadows offers land steward and public access events.

Expenditure Overview

Fiscal Years	Funder	Funding Source	Amount
FY 2015-2024	Open Space Authority	Measure Q Parcel Tax	\$82,266
FY 2015-2024	Open Space Authority	Measure T Parcel Tax	\$88,898
FY 2024-2025	Open Space Authority	Measure Q Parcel Tax	-
FY 2024-2025	Open Space Authority	Measure T Parcel Tax	\$21,943
PROJECT TOTAL COST			\$193,108

FY 2024/2025 Expenditure Breakdown

Expense Category	MQ Amount	MT Amount
Payroll and Benefits	-	\$16,141
Supplies and Consumables	-	\$4,938
Outside Services	-	\$637
Other Services and Fees	-	-
Equipment and Maintenance	-	\$68
Facilities and Utilities	-	\$161
Acquisitions	-	-
TOTAL FOR FISCAL YEAR 2024/2025	-	\$21,943

Outside Services include: Legal Services

Note: Information on the types of expenditures that may be classified into each expense category can be found on page 9 of this report.

EPC #3

Fisher's Bend Agricultural Preserve Operations & Maintenance

Project
Number
P-000272

Program
Operations

Status
Ongoing

Project Description

Fisher's Bend is located in the Mid-Coyote Valley and is currently under an active agriculture operation. A portion of Fisher Creek runs through the property and is actively managed for riparian and wetland restoration.

The Authority currently manages and monitor the agricultural lease, as well as provide routine patrol of the property to address trespass or trash issues.

Fisher's Bend Agricultural Preserve does not offer public access at this time; however, frequent land stewards events are hosted by the Authority at this Preserve.

Expenditure Overview

Fiscal Years	Funder	Funding Source	Amount
FY 2015-2024	Open Space Authority	Measure Q Parcel Tax	\$8,509
FY 2015-2024	Open Space Authority	Measure T Parcel Tax	\$71,901
FY 2024-2025	Open Space Authority	Measure Q Parcel Tax	-
FY 2024-2025	Open Space Authority	Measure T Parcel Tax	\$617
PROJECT TOTAL COST			\$81,027

FY 2024/2025 Expenditure Breakdown

Expense Category	MQ Amount	MT Amount
Payroll and Benefits	-	\$617
Supplies and Consumables	-	-
Outside Services	-	-
Other Services and Fees	-	-
Equipment and Maintenance	-	-
Facilities and Utilities	-	-
Acquisitions	-	-
TOTAL FOR FISCAL YEAR 2024/2025	-	\$617

Outside Services include:

Note: Information on the types of expenditures that may be classified into each expense category can be found on page 9 of this report.

EPC #3

Preserve Management System

Project
Number
P-000283

Program
Operations

Status
Cancelled

Project Description

Deploy a preserve management system for the Open Space Authority's staging areas, special access areas, and events to provide a one-stop location for visitors to obtain habitat passes, event reservations, and event parking passes

Software did not perform to expectations. Subscription with vendor terminated.

Expenditure Overview

Fiscal Years	Funder	Funding Source	Amount
FY 2015-2024	Open Space Authority	Measure Q Parcel Tax	\$3,078
FY 2015-2024	Open Space Authority	Measure T Parcel Tax	\$26,601
FY 2024-2025	Open Space Authority	Measure Q Parcel Tax	-
FY 2024-2025	Open Space Authority	Measure T Parcel Tax	\$251
PROJECT TOTAL COST			\$29,929

FY 2024/2025 Expenditure Breakdown

Expense Category	MQ Amount	MT Amount
Payroll and Benefits	-	\$251
Supplies and Consumables	-	-
Outside Services	-	-
Other Services and Fees	-	-
Equipment and Maintenance	-	-
Facilities and Utilities	-	-
Acquisitions	-	-
TOTAL FOR FISCAL YEAR 2024/2025	-	\$251

Outside Services include:

Note: Information on the types of expenditures that may be classified into each expense category can be found on page 9 of this report.

EPC #3

Coyote Valley Proper Properties (owned by POST) Operations and Maintenance

Project
Number
P-000309

Program
Operations

Status
Ongoing

Project Description

The daily operation, management and stewardship of properties in Coyote Valley proper that are owned by Peninsula Open Space Trust (POST) and managed by the Authority.

Expenditure Overview

Fiscal Years	Funder	Funding Source	Amount
FY 2015-2024	Open Space Authority	Measure Q Parcel Tax	\$3,892
FY 2015-2024	Open Space Authority	Measure T Parcel Tax	\$232,960
FY 2024-2025	Open Space Authority	Measure Q Parcel Tax	-
FY 2024-2025	Open Space Authority	Measure T Parcel Tax	\$186,272
PROJECT TOTAL COST			\$423,124

FY 2024/2025 Expenditure Breakdown

Expense Category	MQ Amount	MT Amount
Payroll and Benefits	-	\$138,776
Supplies and Consumables	-	\$7,547
Outside Services	-	\$7,882
Other Services and Fees	-	-
Equipment and Maintenance	-	\$32,067
Facilities and Utilities	-	-
Acquisitions	-	-
TOTAL FOR FISCAL YEAR 2024/2025	-	\$186,272

Outside Services include: Agricultural Improvements; Vegetation Mgmt

Note: Information on the types of expenditures that may be classified into each expense category can be found on page 9 of this report.

EPC #3

Rancho Cañada del Oro Open Space Preserve Backcountry Trail Planning

Project
Number
P-000324

Program
Capital
Improvement

Status
In Progress -
On Track

Project Description

Public access feasibility study for area of Rancho Cañada del Oro Open Space Preserve, formerly known as Blair Ranch.

Received draft Existing Conditions, Opportunities, Constraints, and Preliminary Alternatives Report. First public survey completed.

Expenditure Overview

Fiscal Years	Funder	Funding Source	Amount
FY 2015-2024	Open Space Authority	Measure Q Parcel Tax	-
FY 2015-2024	Open Space Authority	Measure T Parcel Tax	\$24,790
FY 2024-2025	Open Space Authority	Measure Q Parcel Tax	\$58,919
FY 2024-2025	Open Space Authority	Measure T Parcel Tax	\$46,622
PROJECT TOTAL COST			\$130,331

FY 2024/2025 Expenditure Breakdown

Expense Category	MQ Amount	MT Amount
Payroll and Benefits	-	\$46,622
Supplies and Consumables	-	-
Outside Services	\$58,919	-
Other Services and Fees	-	-
Equipment and Maintenance	-	-
Facilities and Utilities	-	-
Acquisitions	-	-
TOTAL FOR FISCAL YEAR 2024/2025	\$58,919	\$46,622

Outside Services include: Prime Design; Translations; Community Relations

Note: Information on the types of expenditures that may be classified into each expense category can be found on page 9 of this report.

EPC #3

Monarch Habitat Restoration

Project
Number
P-000336

Program
Resource
Management

Status
In Progress -
On Track

Project Description

Plan and implement a community-based restoration project to plant native species that benefit the monarch butterfly and other pollinating invertebrates, and compile educational resources to increase pollinator awareness in Coyote Valley.

FY24-25 maintenance and monitoring is complete. Final period of maintenance and monitoring will continue until January of 2026.

Expenditure Overview

Fiscal Years	Funder	Funding Source	Amount
FY 2015-2024	Open Space Authority	Measure Q Parcel Tax	-
FY 2015-2024	Open Space Authority	Measure T Parcel Tax	\$6,285
FY 2024-2025	Open Space Authority	Measure Q Parcel Tax	-
FY 2024-2025	Open Space Authority	Measure T Parcel Tax	\$9,207
PROJECT TOTAL COST			\$15,492

FY 2024/2025 Expenditure Breakdown

Expense Category	MQ Amount	MT Amount
Payroll and Benefits	-	\$877
Supplies and Consumables	-	-
Outside Services	-	\$8,329
Other Services and Fees	-	-
Equipment and Maintenance	-	-
Facilities and Utilities	-	-
Acquisitions	-	-
TOTAL FOR FISCAL YEAR 2024/2025	-	\$9,207

Outside Services include: Habitat Enhancement; Environmental Education Partnerships

Note: Information on the types of expenditures that may be classified into each expense category can be found on page 9 of this report.

EPC #3

Tilton Ranch Complex Home Improvements

Project
Number
P-000346

Program
Capital
Improvement

Status
Completed

Project Description

The Tilton Ranch Complex is a remodeled 1917 3,200-square-foot ranch home on 60 acres. The home is on a raised foundation constructed of poured concrete with a basement. The Authority received a home inspection report upon purchase that recommends foundation improvements, seismic retrofit, and sump pump installation. Furthermore, the electrical work needs to be brought up to code and will require an electrician to assess and recommend updates.

Expenditure Overview

Fiscal Years	Funder	Funding Source	Amount
FY 2015-2024	Open Space Authority	Measure Q Parcel Tax	\$28,911
FY 2015-2024	Open Space Authority	Measure T Parcel Tax	\$94,953
FY 2024-2025	Open Space Authority	Measure Q Parcel Tax	\$32,060
FY 2024-2025	Open Space Authority	Measure T Parcel Tax	\$807
PROJECT TOTAL COST			\$156,731

FY 2024/2025 Expenditure Breakdown

Expense Category	MQ Amount	MT Amount
Payroll and Benefits	-	\$580
Supplies and Consumables	-	-
Outside Services	\$32,060	\$228
Other Services and Fees	-	-
Equipment and Maintenance	-	-
Facilities and Utilities	-	-
Acquisitions	-	-
TOTAL FOR FISCAL YEAR 2024/2025	\$32,060	\$807

Outside Services include: Construction; Prime Engineering

Note: Information on the types of expenditures that may be classified into each expense category can be found on page 9 of this report.

EPC #3

Croy Redwoods Preserve General Operations & Maintenance

Project
Number
P-000350

Program
Operations

Status
Ongoing

Project Description

The daily operation, management and stewardship of the Authority's lands and public access facilities includes trail and preserve maintenance, resource management such as grazing management, invasive plant management, site monitoring, resource and habitat enhancement, monitoring and maintaining capital structures, and careful stewardship and reporting for contract land management and mitigation.

Croy Redwoods is nestled in the Santa Cruz Mountains in Uvas Creek Canyon. This small preserve includes tributaries of Uvas Creek as well as several small groves of redwood trees. Steep terrain and dense vegetation are hallmarks of this preserve. Access is via a private road. The property is strategically located between Little Uvas Preserve and Uvas Canyon County Park.

This property has no public access at this time and is surrounded by private property.

Expenditure Overview

Fiscal Years	Funder	Funding Source	Amount
FY 2015-2024	Open Space Authority	Measure Q Parcel Tax	-
FY 2015-2024	Open Space Authority	Measure T Parcel Tax	\$579
FY 2024-2025	Open Space Authority	Measure Q Parcel Tax	-
FY 2024-2025	Open Space Authority	Measure T Parcel Tax	-
PROJECT TOTAL COST			\$579

FY 2024/2025 Expenditure Breakdown

Expense Category	MQ Amount	MT Amount
Payroll and Benefits	-	-
Supplies and Consumables	-	-
Outside Services	-	-
Other Services and Fees	-	-
Equipment and Maintenance	-	-
Facilities and Utilities	-	-
Acquisitions	-	-
TOTAL FOR FISCAL YEAR 2024/2025	-	-

Outside Services include:

Note: Information on the types of expenditures that may be classified into each expense category can be found on page 9 of this report.

EPC #3

Coyote Valley Proper General Operations & Maintenance

Project
Number
P-000352

Program
Operations

Status
Ongoing

Project Description

The daily operation, management and stewardship of the Authority's lands and public access facilities includes trail and preserve maintenance, resource management such as grazing management, invasive plant management, site monitoring, resource and habitat enhancement, monitoring and maintaining capital structures, and careful stewardship and reporting for contract land management and mitigation.

Coyote Valley encompasses a total of 7,000 acres south of Santa Clara Valley and is home to wide range of flora and fauna alongside a diverse agricultural industry. The Authority owns and manages various parcels within this 7000-acre valley. Each unit within this area is managed with wildlife connectivity or agricultural preservation.

Docent led hikes and special access days connect the public to these lands and the history of Coyote Valley.

Expenditure Overview

Fiscal Years	Funder	Funding Source	Amount
FY 2015-2024	Open Space Authority	Measure Q Parcel Tax	-
FY 2015-2024	Open Space Authority	Measure T Parcel Tax	\$23,255
FY 2024-2025	Open Space Authority	Measure Q Parcel Tax	-
FY 2024-2025	Open Space Authority	Measure T Parcel Tax	\$36,549
PROJECT TOTAL COST			\$59,805

FY 2024/2025 Expenditure Breakdown

Expense Category	MQ Amount	MT Amount
Payroll and Benefits	-	\$17,648
Supplies and Consumables	-	\$14,512
Outside Services	-	-
Other Services and Fees	-	-
Equipment and Maintenance	-	\$4,389
Facilities and Utilities	-	-
Acquisitions	-	-
TOTAL FOR FISCAL YEAR 2024/2025	-	\$36,549

Outside Services include:

Note: Information on the types of expenditures that may be classified into each expense category can be found on page 9 of this report.

EPC #3

2023 Winter Storms Emergency Response and Repairs

Project
Number
P-000353

Program
Operations

Status
In Progress -
On Track

Project Description

Due to the impacts of the winter storms of 2023 throughout the agency's Preserve System, additional maintenance and safety work is required to mitigate damage caused by the series of storms impacting our geographical area. This project will help to isolate the work performed in service of the storms and help isolate specific work in the case of future FEMA funding

Work is completed. Pending project closeout with FEMA and CalOES.

Expenditure Overview

Fiscal Years	Funder	Funding Source	Amount
FY 2015-2024	Open Space Authority	Measure Q Parcel Tax	-
FY 2015-2024	Open Space Authority	Measure T Parcel Tax	\$120,684
FY 2024-2025	Open Space Authority	Measure Q Parcel Tax	-
FY 2024-2025	Open Space Authority	Measure T Parcel Tax	\$934
PROJECT TOTAL COST			\$121,618

FY 2024/2025 Expenditure Breakdown

Expense Category	MQ Amount	MT Amount
Payroll and Benefits	-	\$934
Supplies and Consumables	-	-
Outside Services	-	-
Other Services and Fees	-	-
Equipment and Maintenance	-	-
Facilities and Utilities	-	-
Acquisitions	-	-
TOTAL FOR FISCAL YEAR 2024/2025	-	\$934

Outside Services include:

Note: Information on the types of expenditures that may be classified into each expense category can be found on page 9 of this report.

EPC #3

Tilton Ranch and Compound Master Planning

Project
Number
P-000354

Program
Capital
Improvement

Status
In Progress -
On Track

Project Description

Master planning for Tilton Ranch and Compound to determine preferred scope of work and phasing of development and improvements of trails, staging areas, and other public access features.

Draft trail easement agreement prepared and staff coordinating with County Parks on trail easement negotiation.

Expenditure Overview

Fiscal Years	Funder	Funding Source	Amount
FY 2015-2024	Open Space Authority	Measure Q Parcel Tax	\$1,123
FY 2015-2024	Open Space Authority	Measure T Parcel Tax	\$22,325
FY 2024-2025	Open Space Authority	Measure Q Parcel Tax	\$29,049
FY 2024-2025	Open Space Authority	Measure T Parcel Tax	\$4,510
PROJECT TOTAL COST			\$57,008

FY 2024/2025 Expenditure Breakdown

Expense Category	MQ Amount	MT Amount
Payroll and Benefits	-	\$4,510
Supplies and Consumables	-	-
Outside Services	\$29,049	-
Other Services and Fees	-	-
Equipment and Maintenance	-	-
Facilities and Utilities	-	-
Acquisitions	-	-
TOTAL FOR FISCAL YEAR 2024/2025	\$29,049	\$4,510

Outside Services include: Wildlife Management

Note: Information on the types of expenditures that may be classified into each expense category can be found on page 9 of this report.

EPC #3

Agricultural Strategic Plan

Project
Number
P-000357

Program
Resource
Management

Status
In Progress -
On Track

Project Description

Develop a focused implementation guidance document for the Authority's agricultural mission. Integrate internal and external stakeholders feedback into defining the Authority's role, how it protects agricultural lands, and how it supports agricultural in the region.

Contract finalized with SAGE; CVCAMP timeline changed due to consultant onboarding

Expenditure Overview

Fiscal Years	Funder	Funding Source	Amount
FY 2015-2024	Open Space Authority	Measure Q Parcel Tax	-
FY 2015-2024	Open Space Authority	Measure T Parcel Tax	\$1,476
FY 2024-2025	Open Space Authority	Measure Q Parcel Tax	-
FY 2024-2025	Open Space Authority	Measure T Parcel Tax	\$808
PROJECT TOTAL COST			\$2,284

FY 2024/2025 Expenditure Breakdown

Expense Category	MQ Amount	MT Amount
Payroll and Benefits	-	\$634
Supplies and Consumables	-	-
Outside Services	-	\$173
Other Services and Fees	-	-
Equipment and Maintenance	-	-
Facilities and Utilities	-	-
Acquisitions	-	-
TOTAL FOR FISCAL YEAR 2024/2025	-	\$808

Outside Services include: Legal Services

Note: Information on the types of expenditures that may be classified into each expense category can be found on page 9 of this report.

EPC #3

Coyote Valley Open Space Preserve Repairs Caused by Unauthorized Vehicles

Project
Number
P-000377

Program
Operations

Status
Completed

Project Description

Repair of Coyote Valley Open Space Preserve from damage received by an unauthorized vehicle access. Damage includes assessment of repair needs, repair of fencing, repair or replace fiberglass bridge and other associate cleanup.

Expenditure Overview

Fiscal Years	Funder	Funding Source	Amount
FY 2015-2024	Open Space Authority	Measure Q Parcel Tax	-
FY 2015-2024	Open Space Authority	Measure T Parcel Tax	\$7,547
FY 2024-2025	Open Space Authority	Measure Q Parcel Tax	-
FY 2024-2025	Open Space Authority	Measure T Parcel Tax	\$3,495
PROJECT TOTAL COST			\$11,041

FY 2024/2025 Expenditure Breakdown

Expense Category	MQ Amount	MT Amount
Payroll and Benefits	-	\$2,595
Supplies and Consumables	-	-
Outside Services	-	\$900
Other Services and Fees	-	-
Equipment and Maintenance	-	-
Facilities and Utilities	-	-
Acquisitions	-	-
TOTAL FOR FISCAL YEAR 2024/2025	-	\$3,495

Outside Services include: Construction

Note: Information on the types of expenditures that may be classified into each expense category can be found on page 9 of this report.

EPC #3

Máayan 'Ooyákma - Coyote Ridge Native Plant Gateway Restoration

Project
Number
P-000383

Program
Resource
Management

Status
In Progress -
On Track

Project Description

The opening of Máayan 'Ooyákma - Coyote Ridge as the Authority's newest preserve presents a unique opportunity to restore native plant presence at the newly constructed staging area, where visitors will be able to appreciate and learn about the diverse species found there. This project will include tending native plant seedlings at the main shade structures, seeding the bare soil along the path heading to the Máayan Wáayi trail, and removal of non-native grasses followed by native grass re-seeding in the parking area islands. This project will also include the creation and placement of plant identification placards at select representatives of native plants behind the main shade structure, which will be able to be moved and adjusted each year when plants reemerge

Second generation of native plants at the shade structure grew to maturity and went to seed. Weed Barrier in the parking area islands suppressed native grasses, and first generation of plants grew from native seed. First year of flash grazing has occurred

Expenditure Overview

Fiscal Years	Funder	Funding Source	Amount
FY 2015-2024	Open Space Authority	Measure Q Parcel Tax	
FY 2015-2024	Open Space Authority	Measure T Parcel Tax	-
FY 2024-2025	Open Space Authority	Measure Q Parcel Tax	-
FY 2024-2025	Open Space Authority	Measure T Parcel Tax	\$17,559
PROJECT TOTAL COST			\$17,559

FY 2024/2025 Expenditure Breakdown

Expense Category	MQ Amount	MT Amount
Payroll and Benefits	-	\$5,387
Supplies and Consumables	-	\$11,341
Outside Services	-	\$831
Other Services and Fees	-	-
Equipment and Maintenance	-	-
Facilities and Utilities	-	-
Acquisitions	-	-
TOTAL FOR FISCAL YEAR 2024/2025	-	\$17,559

Outside Services include: Vegetation Mgmt; Habitat Enhancement

Note: Information on the types of expenditures that may be classified into each expense category can be found on page 9 of this report.

EPC #3

El Toro Public Access

Project
Number
P-000384

Program
Capital
Improvement

Status
In Progress -
On Track

Project Description

In partnership with the City of Morgan Hill, the Authority will plan and develop trails and other amenities to provide public access to El Toro Peak. The project will include a robust public outreach process following initial feasibility studies, as well as partnership, access, and operations agreements. Subsequent phases of the project will include concept design, environmental review, construction documentation, and construction.

Expenditure Overview

Fiscal Years	Funder	Funding Source	Amount
FY 2015-2024	Open Space Authority	Measure Q Parcel Tax	
FY 2015-2024	Open Space Authority	Measure T Parcel Tax	-
FY 2024-2025	Open Space Authority	Measure Q Parcel Tax	-
FY 2024-2025	Open Space Authority	Measure T Parcel Tax	\$2,108
PROJECT TOTAL COST			\$2,108

FY 2024/2025 Expenditure Breakdown

Expense Category	MQ Amount	MT Amount
Payroll and Benefits	-	\$2,108
Supplies and Consumables	-	-
Outside Services	-	-
Other Services and Fees	-	-
Equipment and Maintenance	-	-
Facilities and Utilities	-	-
Acquisitions	-	-
TOTAL FOR FISCAL YEAR 2024/2025	-	\$2,108

Outside Services include:

Note: Information on the types of expenditures that may be classified into each expense category can be found on page 9 of this report.

EPC #3

Natural Resources GIS Monitoring Tools

Project
Number
P-000385

Program
Resource
Management

Status
In Progress -
Delayed

Project Description

This project will enhance data-capture capabilities within the Natural Resources department by migrating critical workflows from paper to digital tools. The highest priority workflow to migrate is for annual mulch monitoring. Other workflows to address include monitoring at OSA-managed properties, wildlife observation tracking, and botanical monitoring. Reinventing these workflows with digital tools will improve efficiency during data gathering in the field, aggregate observations into a queryable database, integrate into other agency-wide datasets, and reduce time spent collating reporting materials. This work will utilize Esri's ArcGIS Survey123 and Field Maps software, which the Authority is already licensed for.

Expenditure Overview

Fiscal Years	Funder	Funding Source	Amount
FY 2015-2024	Open Space Authority	Measure Q Parcel Tax	
FY 2015-2024	Open Space Authority	Measure T Parcel Tax	-
FY 2024-2025	Open Space Authority	Measure Q Parcel Tax	-
FY 2024-2025	Open Space Authority	Measure T Parcel Tax	\$197
PROJECT TOTAL COST			\$197

FY 2024/2025 Expenditure Breakdown

Expense Category	MQ Amount	MT Amount
Payroll and Benefits	-	\$197
Supplies and Consumables	-	-
Outside Services	-	-
Other Services and Fees	-	-
Equipment and Maintenance	-	-
Facilities and Utilities	-	-
Acquisitions	-	-
TOTAL FOR FISCAL YEAR 2024/2025	-	\$197

Outside Services include:

Note: Information on the types of expenditures that may be classified into each expense category can be found on page 9 of this report.

(for printing purposes – this page intentionally left blank)



Urban Grant Program and Disbursements

(for printing purposes – this page intentionally left blank)

Grant Program Funded by Measure Q and Measure T

The Urban Grant Program is funded by both Measure Q and Measure T and offer grants that will benefit communities and neighborhoods within the Authority's jurisdiction. The Authority's jurisdiction includes the cities of San Jose, Milpitas, Santa Clara, Campbell, Morgan Hill and unincorporated areas of Santa Clara County.

The Urban Grant Program addresses the needs of urban communities, including areas that currently have limited access to preserves and parks. The grant program aims to fund projects that will improve the quality of life for urban residents. The competitive grants are open to non-profits, public agencies, schools, and school districts, and are awarded in one or more of these four categories:

- Environmental Stewardship and Restoration
- Parks, Trails, and Public Access
- Environmental Education
- Urban Agriculture/Food Systems



Bay Area Ridge Trail - Very Important Trails

Each fiscal year, the Authority may set aside up to 25% of the parcel tax revenue received from Measure Q and Measure T to fund the grant programs. These **allocations** are earmarked as restricted funds and made available for the next grant cycle. The Authority's Board of Directors solicits applications and approves the grant **awards**. The Authority records and reports the **disbursement** when payment is made to reimburse the grantee.

Starting in Fiscal Year 2021/2022, the Authority no longer allocates any funds towards the grant program using Measure Q funds. In its replacement, the Board approved an allocation of \$100,000 in FY 2024/2025 to fund the grant program.

Urban Grant Program Guidelines

Prior to each grant solicitation cycle, the Board approves an [*Urban Grant Program Guidelines*](#) document outlining the process and criteria the Authority will use to solicit grant applications, evaluate proposals, and award grants.

The document provides applicants with general information about the current solicitation, such as total funds available for award, eligibility, public workshop times and locations, and important dates and deadlines. It further defines the project categories, types, and requirements, as well as the evaluation criteria to which the Authority's review committee adheres when reviewing and scoring each application. A staff review team is formed to review and make recommendations to the Board of Directors. For capital or planning grants, the applications are also presented at a publicly-noticed Citizens' Advisory Committee (CAC) meeting where committee members review and provide feedback to staff for inclusion in final recommendations to the Board of Directors. The Board makes final award decisions in line with the goals and objectives of the Measure Q and Measure T Expenditure Plans.

Grant agreements are drafted and reviewed by the Authority's Legal Counsel. The grant agreements include the general terms and conditions of funding as well as a detailed Scope of Work, Project Goals, and Project Budget that are used to evaluate reimbursement requests, project deliverables, and work progress. Grantees are required to submit final reports confirming completion of the project and project goal results, which the Authority verifies against the grant agreement.

During the independent audit, disbursements paid during the fiscal year are reviewed against the grant agreements.

Through this process from award to disbursement, the Board provides feedback and approval on the grant awards, staff reviews and processes reimbursements, and the independent auditor examines disbursements to ensure all projects funded by the Authority with Measure Q and Measure T funds support the urban communities within the Authority's boundaries and are consistent with the Authority's mission and objectives of the *Expenditure Plans*.

Grant Disbursements and Balances as of June 30, 2025

A summary of all awards and disbursements made since the inception of the Urban Grant Program to June 30, 2025, is shown below.

Table 12: Urban Grant Program

Grantee	Award	Total Disbursements	Balance
Children's Discovery Museum	308,765	308,765	-
SAGE	10,000	10,000	-
Guadalupe River Park Conservancy	24,987	24,987	-
Latinos United for a New America (LUNA)	250,000	250,000	-
Bay Area Wilderness Training	40,000	40,000	-
Joseph George Middle School / Citizen Schools	24,675	14,532	_*
San Jose State University Research Foundation	166,740	162,184	_*
City of Campbell	35,762	20,815	_*
Santa Clara County Public Health Department	250,000	250,000	-
Santa Clara County Creeks Coalition	12,142	12,142	-
Bay Area Ridge Trail Council	51,401	51,401	-
The Regents of the University of California / UCCE Santa Clara Cty	167,411	130,842	_*
The Santa Clara County Food System Alliance	24,999	24,963	_*
Keep Coyote Creek Beautiful	76,703	62,468	_*
City of Morgan Hill	248,012	239,658	_*
San Francisco Bay Bird Observatory	34,500	34,500	-
Friends of Master Gardeners of Santa Clara County	132,353	124,021	_*
Bay Area Ridge Trail Council	62,122	62,115	_*
Bay Area Wilderness Training	62,705	62,705	-
City of Morgan Hill	100,000	100,000	-
City of San Jose	30,000	29,788	_*
City of Santa Clara	59,250	59,245	_*
Guadalupe River Park Conservancy	27,010	22,864	_*
Keep Coyote Creek Beautiful	67,134	66,657	_*
Living Classroom	65,000	65,000	-
Our City Forest	100,000	99,431	_*
Sacred Heart Community Service	100,000	-	_* **
Valley Verde	45,000	45,000	-
Veggielution	75,040	75,040	-
Bay Area Older Adults	8,000	8,000	-
Bay Area Wilderness Training	15,000	15,000	-
Guadalupe River Park Conservancy	22,038	22,038	-
Keep Coyote Creek Beautiful	14,312	14,312	-
Living Classroom	10,000	10,000	-
Sacred Heart Community Service	24,971	24,971	-
San Francisco Bay Wildlife Society	6,055	6,055	-

Annual Expenditure Plan Status Report – FY 2024/2025

Grantee	Total		
	Award	Disbursements	Balance
San Jose Children’s Discovery Museum	24,875	24,875	-
Veggielution	20,000	19,986	- *
Saved By Nature	39,951	39,327	- *
Environmental Volunteers	32,063	31,355	- *
Sacred Heart Community Service	39,900	38,750	- *
Earth Island Institute - BAWT	24,960	24,960	-
Santa Clara Unified School District	31,750	29,828	- *
Keep Coyote Creek Beautiful	37,702	37,568	- *
Veggielution	150,000	150,000	-
Santa Clara Valley Audubon Society	79,608	24,353	55,255
Bay Area Older Adults	95,561	95,561	-
Guadalupe River Park Conservancy	130,000	45,235	84,765
Santa Clara County Public Health Department	100,000	100,000	- *
San Jose State University Research Foundation	160,000	140,280	- *
Living Classroom	40,000	40,000	-
Bay Area Ridge Trail Council	40,000	40,000	-
Silicon Valley Bicycle Coalition	40,000	36,658	- *
San Francisco Bay Bird Observatory	40,000	39,845	155
Acterra: Action for a Healthy Planet	99,719	63,375	36,344
Bay Area Ridge Trail Council	28,007	15,604	12,403
City of Santa Clara Parks and Recreation Department	21,076	-	21,076
Earth Island Institute – Bay Area Wilderness Training	34,306	8,805	25,501
Garden to Table Silicon Valley	50,000	28,463	21,537
Green Foothills	94,776	94,776	-
Guadalupe River Park Conservancy	44,400	25,246	19,154
San Jose Conservation Corps and Charter School	100,000	51,452	48,548
San Jose State University Research Foundation	100,000	51,462	48,538
Santa Clara Unified School District	64,580	42,183	22,397
Saved by Nature	99,985	45,398	54,587
Valley Verde	75,000	60,308	14,692
Veggielution	100,000	62,715	37,285
City of San Jose	50,000	45,000	5,000
Our City Forest	25,000	-	25,000
San Jose Children’s Discovery Museum	124,000	124,000	-
Santa Clara Unified School District	200,000	200,000	-
School of Arts and Culture at MHP	200,000	5,000	195,000
Veggielution	200,000	26,364	173,636
TOTALS	\$5,589,306	\$4,458,148	\$900,872

*Grantee did not claim eligible disbursements in the full award amount

**Grant canceled



EPOC and Administrative Expenditures



(for printing purposes – this page intentionally left blank)

Expenditure Plan Oversight Committee Costs

Expenditure Plan Oversight Committee Costs represent expenditures related to the ongoing costs of administering committee meetings. Expenses include fees for the annual audit preparation, expenses for public meetings conducted by the EPOC, legal costs for EPOC, and staff time for board packet preparation related to EPOC meetings. Expenses charged to this program cannot exceed $\frac{1}{10}$ of 1% of parcel tax gross revenues. Any amount in excess of the allowance is charged to the administrative costs allowance. Table 13 summarizes the expenses incurred for Fiscal Year 2024/2025.

Table 13: Breakdown of EPOC Costs	Amount
Committee Expenses and Board Packet Preparation	\$6,038
Annual Independent Financial Audit Services and Preparation	\$2,000
TOTAL EPOC COSTS	\$8,038

Administrative Costs

Administrative expenses are costs that the Authority incurs during the ordinary course of business, and not directly associated with a specific expense category or Measure Q or T-eligible project.

Administrative expenses may include but are not limited to legal services, facility maintenance, electricity and other utilities, business insurance, fees and taxes, general office supplies, computer software and equipment, and printing and courier expenses.

Under the Measure T Expenditure Plan guidelines, the Board approves an allowance for administrative expenses each fiscal year. For Fiscal Year 2024/2025, the Board approved a budget of \$2,000,000 of Measure T revenues to partially fund the agency's administrative expenses. Accordingly, the Authority only charges a portion of its total annual administrative expenses to Measure T. Any remaining balance is charged to other funding sources. The administrative expenses are reviewed and verified by the independent auditor to ensure the portion charged to Measure T does not exceed the Board-approved allowance.

Administrative expenses charged to the Urban Grant Program primarily consist of staff time spent reviewing and processing grant agreements and disbursements and managing the overall grant cycle process. Besides administrative expenses incurred by the Authority for the grant program, grant applicants may request administrative budget for their projects. If the grant is awarded, any disbursements for administrative expenses made to the grantee count towards the five percent allowance.

Additional administrative expenses related to Measure T include staff time spent preparing and publishing the Annual Expenditure Plan Status Report and contracting for parcel tax engineering services with a tax administrator.

Other general administrative costs related to running the Authority are allowed under the Expenditure Plan. In this Fiscal Year 2024/2025, Measure T allowed the Authority to purchase vehicles and field equipment, land management supplies, small tools, and fuel used by the general office and field staff.

Table 14 summarizes the expenses incurred and charged to the Measure T fund in Fiscal Year 2024/2025.

Table 14: Breakdown of Administrative Costs	Amount
GIS Program Management	\$34,032
Communications and Media Program	\$42,322
Urban Grant Program Administration	\$104,572
General Grant Funding Research and Writing	\$87,681
Strategic Preserve Planning Program	\$10,646
Annual Expenditure Plan Status Report Preparation	\$5,095
Measure Q and T Parcel Tax Engineering Services	\$9,200
Committee Packet Preparation and Attendance	\$19,715
Legal Counsel Services	\$99,135
Worker's Compensation Insurance	\$246,890
Business Insurance	\$198,735
Radio and Cellular Services	\$36,522
General Supplies and Consumables	\$694,210
TOTAL ADMINISTRATIVE COSTS	\$1,588,754



Appendices



- A. Index of Projects Funded by Measure Q and Measure T in Fiscal Year 2024/2025
- B. Responses to the Measure Q Oversight Report and Recommendations
- C. The Open Space, Wildlife Habitat, Clean Water and Increased Public Access Expenditure Plan (Measure Q)
- D. 2020 Expenditure Plan (Measure T)

(for printing purposes – this page intentionally left blank)

Index of Projects Funded by Measure Q and Measure T in Fiscal Year 2024/2025

Project Number	EPC	Project	MQ Funds Expended in FY 24/25	MT Funds Expended in FY 24/25	Status	Page Number
K-000188	1	Regional Project Reviews		211,441.78	Ongoing	31
K-000373	3	Habitat Stewardship Program		158,727.91	Ongoing	53
K-000374	3	Agriculture Program		88,112.55	Ongoing	54
P-000014	1	Fuels Management Plan		809.13	In Progress - Delayed	32
P-000019	1	Priority Land Acquisition Projects	33,535.00	263,961.57	Ongoing	33
P-000024	1	Coyote Valley Conservation Strategy		28,120.77	Ongoing	34
P-000032	3	Coyote Valley Open Space Preserve Improved North Meadow Public Access	106,860.03	96,520.25	In Progress - On Track	55
P-000035	3	Coyote Valley Open Space Preserve Equestrian Lot Improvements		39,906.32	Completed	56
P-000036	3	Rancho Cañada del Oro Llagas Creek Bridge and Day Use Area	2,105.86	5,394.22	Completed	57
P-000087	3	Coyote Valley Open Space Preserve Operations & Maintenance		448,194.90	Ongoing	58
P-000088	3	Sierra Vista Open Space Preserve Operations & Maintenance		605,075.36	Ongoing	59
P-000089	3	Coyote Ridge Open Space Preserve Operations & Maintenance		364,896.14	Ongoing	60
P-000090	3	Rancho Cañada del Oro Open Space Preserve Operations & Maintenance		344,972.76	Ongoing	61
P-000091	3	Diablo Foothills Open Space Preserve Operations & Maintenance		16,935.86	Ongoing	62
P-000092	3	Little Uvas Open Space Preserve Operations & Maintenance		4,243.53	Ongoing	63
P-000093	3	Palassou Ridge Open Space Preserve Operations & Maintenance		12,989.50	Ongoing	64
P-000095	3	North Pajaro River Agricultural Preserve Operations & Maintenance		17,487.82	Ongoing	65
P-000096	3	Santa Teresa Foothills Open Space Preserve Operations & Maintenance		5,657.76	Ongoing	66
P-000097	3	Upper Uvas Open Space Preserve Operations & Maintenance		1,687.72	Ongoing	67
P-000098	3	Mount Chual Open Space Preserve Operations & Maintenance		1,849.41	Ongoing	68
P-000099	3	El Toro Open Space Preserve Operations & Maintenance		15,345.76	Ongoing	69
P-000112	1	Conservation Easement Monitoring		9,790.11	Ongoing	35
P-000123	1	Natural Resource Policy and Planning		44,884.64	Ongoing	36
P-000202	3	South Pajaro River AP Operations & Maintenance		14,604.66	Ongoing	70
P-000203	1	Tilton Ranch Acquisition		19,859.78	In Progress - Delayed	37

Project Number	EPC	Project	MQ Funds Expended in FY 24/25	MT Funds Expended in FY 24/25	Status	Page Number
P-000227	2	Blair Ranch Pond Habitat Enhancement (RC-07 & RC-10)	186,653.98	40,026.77	In Progress - On Track	43
P-000247	3	Interp & Environmental Education Program		359,639.49	Ongoing	71
P-000248	3	Volunteer Program		116,786.26	Ongoing	72
P-000249	1	Coyote Valley Acquisitions	100,078.40	41,320.58	In Progress - On Track	38
P-000250	1	Coyote Valley Conservation Areas Master Plan	433,109.43	327,166.03	In Progress - Delayed	39
P-000251	2	Pajaro River Riparian Restoration		3,956.30	Completed	44
P-000267	3	North Coyote Valley Conservation Area Operations & Maintenance		52,106.78	Ongoing	73
P-000268	3	Tulare Meadows Operations & Maintenance		21,943.42	Ongoing	74
P-000272	3	Fisher's Bend Agricultural Preserve Operations & Maintenance		616.89	Ongoing	75
P-000283	3	Parking Reservation System		250.84	Cancelled	76
P-000307	2	Spreckles Wetland Enhancement Project	24,307.73	8,641.08	In Progress - On Track	45
P-000308	2	Fisher Creek Riparian Habitat Restoration (BEF-Funded)		2,616.69	In Progress - On Track	46
P-000309	3	COVA Operations and Maintenance		186,272.21	Ongoing	77
P-000324	3	Rancho Cañada del Oro Open Space Preserve Regional Trail Planning	58,919.32	46,622.09	In Progress - On Track	78
P-000336	3	Monarch Habitat Restoration Project		9,206.60	In Progress - On Track	79
P-000343	2	Fisher Creek Riparian Habitat Restoration (NFWF-Funded)		5,349.95	In Progress - On Track	47
P-000344	2	Llagas Creek and Pajaro River Confluence Restoration Project		2,895.50	In Progress - Delayed	48
P-000346	3	Tilton House Complex Home Improvements	32,060.00	807.34	Completed	80
P-000350	3	Croy Redwoods Operation & Maintenance			Ongoing	81
P-000352	3	Coyote Valley Operation & Maintenance		36,549.38	Ongoing	82

Project Number	EPC	Project	MQ Funds Expended in FY 24/25	MT Funds Expended in FY 24/25	Status	Page Number
P-000353	3	2023 Winter Storms Emergency Response and Repairs		933.87	In Progress - On Track	83
P-000354	3	Tilton Ranch Complex Master Planning	29,049.26	4,510.43	In Progress - On Track	84
P-000356	1	Acquisition Strategy Document		2,589.74	On Hold	40
P-000357	3	Agricultural Strategic Plan		807.70	In Progress - On Track	85
P-000359	2	CVCAMP Restoration Pilot Project (stepping stone)	35,613.11	52,718.91	In Progress - On Track	49
P-000377	3	Coyote Valley Open Space Preserve Repairs Unauthorized Vehicles		3,494.67	Completed	86
P-000383	3	MOCR Native Plant Gateway Restoration		17,559.36	In Progress - On Track	87
P-000384	3	El Toro Public Access		2,107.76	In Progress - On Track	88
P-000385	3	Natural Resources GIS Monitoring Tools		196.84	In Progress - Delayed	89

Authority Board of Directors' Response to EPOC Oversight Report Recommendations for Fiscal Year 2023/2024

The Expenditure Plan Oversight Committee (EPOC) provides an independent review of all revenues and expenditures of Measure Q and Measure T Funds. The Committee, appointed by the Authority Board of Directors pursuant to Measure Q and Measure T, ensures accountability, transparency and public oversight of all funds collected and allocated under the parcel tax.

The Committee's roles and responsibilities, as defined by the Expenditure Plans, are to:

- Review Expenditure Plan expenditures on an annual basis to ensure they conform to the Expenditure Plan.
- Review the annual audit and report prepared by an independent auditor; and
- Submit the Committee's recommendations and oversight report to the Open Space Authority Board.

The Committee does not oversee any other Authority financial information, nor do they set policy or provide input or direction on projects, budgets, work plans or financial matters pertaining to other Authority funds.

On July 24, 2025, the Expenditure Plan Oversight Committee (EPOC) presented the Annual Expenditure Plan Oversight Committee Report to the Open Space Authority Board of Directors, providing a summary and recommendations on Measure Q and Measure T expenditures for FY 2023/2024. At the meeting, Staff stated they would bring the recommendations to the Board for review and response to the recommendations.

On September 25, 2025, Staff brought the recommendations to the Board of Directors for review. Staff provided an update on actions they had implemented in response to the EPOC's feedback. The Board approved the Authority's responses and actions for each of the EPOC's recommendations, which are documented herein.

Based on the sample transactions audit:

- Remove all transactions less than \$1,000 from the selection list
- Align transaction categories with Expenditure Plan Categories 1 – 4

Staff Response: Staff will not include any transactions under \$1,000 in the transactions list provided to the committee. Starting from fiscal year 2024/2025, EPOC will be presented with a transactions list with transactions sorted into four categories aligned with those outlined in the Expenditure Plans:

1. *Transactions related to the protection and conservation of natural and working lands*
2. *Transactions related to protection and restoration of water resources*
3. *Transactions related to new public access projects, operations and maintenance of existing preserves, and environmental education programs*
4. *Transactions related to the Urban Grant Program*

Based on the sample transactions cover sheet:

- Add “Reimbursement Request for Grants” after “Invoice” in line 4
- Change “matches PO” to “is less than or equal to PO” in line 7
- Add “Board Resolution for Grants” after “expense purchase order” in line 8

Staff Response: Staff will update the cover sheet to rename all the categories to align with the Expenditure Plan Categories. Staff will work with the committee to review the cover sheet prior to the sample audit and make any appropriate edits.

Based on the payroll/timecard audit:

- Provide most recent RACI document with each selected transaction, if available
- Change language in line 8 as follows: Does the number of hours/labor costs appear appropriate to the staff levels projected in the RACI?

Staff Response: Labor hours by position spreadsheet had been provided for FY 2022/2023, but staff will rename the columns on the existing report for clarity.

Based on review of the SCVOSA website:

- Rename the Investing in Nature page to “Investing in Nature - Measure Q/Measure T”
- Make the additional three key programs funded with Measure Q and Measure T revenues – Protect Lands, Environmental Education Programs, and Urban Grant Programs – equally visible to the Preserves on the main page of the SCVOSA website

Staff Response: During the budget and work plan development process, project managers provide a rough estimate of labor hours for the core project team members to help assess general staff capacity to ensure the agency can balance the commitments of the proposed annual work plan. The RASCI chart is not intended to be used to budget labor hours/costs.

To aid the committee with review of the timecards, staff may provide a list of the core project team members associated with the project selected for review, as well as a brief description of their role and the scope of work completed during the fiscal year.

The Open Space, Wildlife Habitat, Clean Water and Increased Public Access Expenditure Plan

A. Summary

Since its creation in 1993, the Santa Clara County Open Space Authority (OSA) has protected over 16,000 acres of open space and natural areas, preserving the natural beauty and health of our area, and protecting our region's water resources, air quality, wildlife and scenic views for residents today and future generations. Governed by a publicly elected board of directors, OSA has used funds wisely, bringing in state, federal, and private grant money, and providing annual audits in a transparent public process.

However, the Santa Clara County Open Space Authority currently faces significant challenges. As our region continues to grow, protecting hillsides and open spaces are increasingly important to our community. If adopted by voters, the Open Space, Wildlife Habitat, Clean Water, and Increased Public Access Measure (Measure) would allow OSA to protect and preserve natural open space areas for future generations by: improving parks, open spaces and trails; protecting land around creeks, rivers and streams to prevent pollution and improve local water quality; preserving wildlife habitat; expanding public access; enhancing environmental education; and protecting scenic hillsides.

The Santa Clara County Open Space Authority will ensure that the revenue generated is spent in the most efficient and effective manner possible, consistent with serving the public interest and in accordance with existing law. The Authority shall use the funding only for the purposes set forth in this Expenditure Plan ("Plan") and it shall give priority to projects in this Plan.

The high priority potential projects listed in the Plan are the result of a broad public engagement process to create a shared vision for the future of the region's open space. This vision plan developed by the Santa Clara County Open Space Authority, called the *Santa Clara Valley Greenprint*, identifies high priority open space and natural resource lands as identified in this Plan. If approved, the proceeds from the parcel tax would be allocated to fund high priority projects distributed throughout the Santa Clara County Open Space Authority's jurisdiction such as those listed below.

The Authority may annually review and propose amendments to the Plan to provide for the use of additional federal, state and local funds, to account for unexpected revenues, or to take into consideration unforeseen circumstances, provided, however, that all funds collected pursuant to the Measure shall be used solely for the purposes of this Plan as presented to the voters.

B. Program Descriptions

1. Protect Open Space, Redwood Forests, Wildlife Habitat, Scenic Hillsides and Agricultural Land

The purpose of this program is to permanently protect new open space lands essential to completing connections in the region's park, open space and habitat systems as identified in the Authority's *Santa Clara Valley Greenprint*, the *County Parks Acquisition Plan*, *Santa Clara Valley Habitat Plan*, and other adopted plans.

- a. Ensure permanent protection of essential open space, water resources and wildlife habitat. Areas for open space protection can include but are not limited to Baylands, East San Jose Foothills, Upper Alameda Creek Watershed, Coyote Ridge, Coyote Valley, Upper Coyote Creek Watershed, Southern Santa Cruz Mountains, Sargent Hills, Upper Pajaro River Watershed, Pacheco Creek Watershed. Protect, restore and enhance critical habitat to implement the Valley Habitat Plan such as serpentine grasslands, wetlands, redwood forests and riparian areas along creeks, rivers and streams.
- b. Leverage public and private funding and coordinate protection efforts to complete critical open space preservation
- c. Conserve the region's last remaining farmland and rangelands in and around areas such as the Coyote Valley, Morgan Hill, Gilroy and Pajaro River to protect local food and maintain environmental benefits provided by agricultural lands including water supply, groundwater recharge, flood risk reduction, and habitat protection.
 - i. Conserve high priority farmland and rangelands through voluntary agreements with willing landowners.
 - ii. Provide grants to resource conservation districts (RCDs) and other agricultural organizations to work with farmers and ranchers to promote natural resource stewardship.

2. Protect Land around Creeks, Rivers and Streams to Prevent Pollution and Improve Local Water Quality and Supply

The purpose of this program is to protect and restore natural areas that buffer our rivers, lakes and streams, including the Guadalupe River, Coyote Creek, Fisher Creek, Penitencia Creek, Upper Alameda Creek, Uvas Creek, Llagas Creek, Pacheco Creek, Pescadero Creek and the Pajaro River to protect water supply and water quality.

- a. Protect clean, safe drinking water supplies by restoring and enhancing natural areas around local creeks, rivers and streams from their headwaters in the hills to the Bay.
- b. Preserve key open space areas to enhance local water supply and recharge groundwater.
- c. Protect water resources, floodplains, wetlands and riparian corridors.

3. Open, Improve and Maintain Parks, Open Space, and Trails

The purpose of this program is to maintain existing Open Space Preserves, safeguard the health of natural areas and wildlife habitat; reduce the risk of wildfires; provide more hiking and walking trails and increase opportunities for environmental education experiences.

- a. Open and expand Preserves on existing lands, including more trails for walking, hiking and biking and more access points for residents. Develop science-based environmental education programs and facilities, trails, and other public access facilities in appropriate locations including East San Jose/Penitencia Creek/Milpitas Foothills, Coyote Ridge, Coyote Valley, Morgan Hill El Toro Peak, Almaden Valley/Santa Teresa Hills.
- b. Construct new trails and close gaps in regional hiking and bicycle trails (such as the Bay Area Ridge Trail, San Francisco Bay Trail, Coyote Creek Trail and Guadalupe River).
- c. Reduce the risk of wildfire near communities, protect air and water quality and control invasive, non-native weeds through vegetation management in coordination with fire districts, cities and the County.
- d. Provide safe, well-maintained Open Space Preserves and recreational trails, including the Bay Area Ridge Trail, San Francisco Bay Trail, Guadalupe River Trail and Coyote Creek Trail.
- e. Work with qualified organizations and entities, including, but not limited to, the California Conservation Corps, the San Jose Conservation Corps, AmeriCorps and others, to maintain facilities in Open Space Preserves including, but not limited to, cultural and historic structures, bridges, roads, and other infrastructure.
- f. Prevent pollution and vandalism of open space, water resources and wildlife habitat.

4. Urban Open Space, Parks and Environmental Education Program

The purpose of this Grant Program is to assist municipalities, schools and applicable non-profit organizations within the cities of Milpitas, Santa Clara, San Jose, Campbell, Morgan Hill and urban County areas to create healthy and safe open space and park areas for their communities by creating or improving parks, preserving open space and maintaining or creating trails; enhancing and restoring habitat, natural resources and water resources; and enhancing access to healthy food through urban farms and gardens.

No more than 25 percent of the revenues generated by this funding measure will be made available for this Grant Program. The Grant Program would provide grants to cities, the County, schools and non-profit organizations on a competitive basis for the types of projects listed below within the boundaries of the OSA. Funds shall be available through an annual grant allocation process designed by the Santa Clara County Open Space Authority, in coordination with cities, the County, schools and non-profit organizations within the boundaries of the OSA. Grant allocations shall reward a diversity of projects and be balanced geographically across the Santa Clara County Open Space Authority's jurisdiction. The grant allocation process and the individual projects shall be subject to approval by the Authority's Governing Board of Directors ("Board").

Urban Open Space Project Criteria:

- a. Protect and enhance open space, wildlife habitat and wildlife corridors, and develop land for nature-based parks, open space preserves, trails and greenbelts.
- b. Create, develop and implement pedestrian and bicycle trail connections to connect urban communities to local and regional parks, Open Space Preserves, creeks and flood control channels, to improve public health (i.e. San Francisco Bay Trail, Coyote Creek, Guadalupe River, Silver Creek, Thompson Creek, Penitencia Creek, Three Creeks Trail, Five Wounds Trail).
- c. Implement urban tree planting and tree protection/maintenance.
- d. Create and expand urban farms and community gardens to support public health and local agriculture.
- e. Expand nature and science-based environmental education programs and hands-on youth engagement projects.

EXAMPLES OF HIGH PRIORITY POTENTIAL PROJECTS AND GEOGRAPHIC DISTRIBUTION

1. San Francisco Baylands Restoration: Increase wildlife habitat and reduce pollution by restoring salt ponds to tidal marsh, provide enhanced flood control, and develop new public access to the Bay
2. Alviso Adobe and Higuera Adobe Parks: Establish Alviso Adobe as a historical museum, and refurbish the historic Caretaker's Cottage in Higuera Adobe Park in collaboration with the City of Milpitas
3. San Francisco Bay Trail: Increase public access by closing gaps in Bay Trail walking and biking trail connections
4. San Francisco Bay Area Water Trail: Provide Water Trail public access amenities at Alviso Marina
5. Ulistac Natural Area: Increase educational programming, and restore natural habitat
6. Sierra Vista: Establish staging area and trails, convert historic residence to visitor hostel, restore pond and wildlife habitats for endangered species
7. Penitencia Creek Trail: Complete trail linking Penitencia Creek community to Alum Rock Park and Sierra Vista Open Space Preserve
8. Guadalupe River Nature Center and Environmental Programming: Partner with nonprofits to establish outdoor environmental education learning center and interpretive programming for youth and families
9. Five Wounds Trail: Develop additional trails connecting to future public transit station
10. Coyote Creek Trail: Expand walking and biking trail connections and restore natural habitats
11. Silver Creek Trail: Increase walking and biking opportunities by creating connections to regional trails, parks and transit
12. Three Creeks Trail: Complete eastern trail alignment

13. San Tomas Aquino /Saratoga Creek Trail: Construct walking and biking trails through cities of Campbell and Santa Clara
14. Thompson Creek Trail Improvements: Complete walking and biking trail improvements
15. Guadalupe River Trail: Expand walking and biking trail connections
16. Martial Cottle Park: Partner with County Parks to develop trail link to Blossom Hill Light Rail Station and implement recreation and wetland restoration projects
17. Santa Teresa Hills: Partner with City of San Jose, County and Santa Teresa Neighborhood Association to protect land and develop regional ridgeline trail connections to create more access to local trails
18. Coyote Ridge: Establish new open space preserve with parking and regional trails, and protect and restore habitat for endangered species
19. Calero County Park: Partner with County to establish a staging area, public access and trails at Rancho San Vicente and at McKean Road
20. Coyote Valley Open Space Preserve: Build an outdoor learning center and a loop trail accessible to seniors and people with disabilities, and restore and enhance wetland habitat
21. Coyote Valley Agriculture and Natural Resource Reserve: Preserve agricultural lands, enhance natural resources, establish public access, and protect wildlife corridor
22. Youth Agricultural Education and Demonstration Farm: Partner with Cities of San Jose, Morgan Hill, Sobrato High School, nonprofits and agricultural organizations to establish an agricultural education and demonstration farm in the Coyote Valley Greenbelt
23. Rancho Cañada del Oro Open Space Preserve: Restore wildlife habitat, build an interactive education center, and construct new staging area and regional trails for increased public access
24. El Toro Peak: Partner with City of Morgan Hill to establish an open space preserve with staging area and trails, and restore natural habitat
25. Southern Santa Cruz Mountains: Establish regional trail connections between Uvas Reservoir, Uvas County Park and Rancho Cañada del Oro Open Space Preserve, develop staging area, and protect wildlife corridor
26. Uvas Creek: Protect wildlife habitat and corridor, protect natural lands for water supply and water quality, and increase trails to close gaps in regional trails
27. Palassou Ridge: Establish open space preserve, restore historic stone house for visitor center, develop multi-use trails connecting to Henry Coe State Park; implement wildfire prevention and habitat restoration projects
28. Diablo Foothills: Establish open space preserve, restore wetlands and bird habitat, implement public access improvements
29. Sargent Hills: Protect wildlife corridor, create staging area, public access and regional trail connections to the Bay Area Ridge Trail

30. South County Agriculture: Conserve working farms and ranches near Morgan Hill, Gilroy and Pajaro River for greenbelts and agricultural viability and to enhance flood control, water quality, wildlife habitat and connectivity

C. Administrative Provisions and Fiscal Safeguards

1. Citizen Oversight and Independent Financial Audits

In order to ensure accountability, transparency and public oversight of all funds collected and allocated under this Measure and to comply with state law, all of the following shall apply:

- a. On or before January 1 of each fiscal year, the Authority's chief fiscal officer shall file an annual report with the Board that explains (1) the amount of funds collected and expended under this Measure and (2) the status of the projects authorized to be funded by this revenue in compliance with Government Code Sections 50075.1(d), 50075.3.
- b. No later than June 30, 2015, or the first collection of revenue pursuant to the Measure, whichever is later, an Independent Oversight Committee shall be convened to review the expenditures of all parcel tax revenues collected under this Measure. The Board shall establish by resolution the terms, composition, and specific duties of the Oversight Committee, consistent with the "Citizen Oversight and Independent Financial Audits" provisions set forth in this Part C(1). The Oversight Committee will consist of seven at-large members. In making appointments to the Oversight Committee, the Board will seek to reflect the demographic diversity of its jurisdiction.
- c. Members of the Oversight Committee shall be appointed by the Board and shall be residents within the Santa Clara County Open Space Authority's jurisdiction who are neither elected officials of any government, nor employees from any agency or organization that directly benefits financially from the proceeds of the parcel tax.
- d. Oversight Committee meetings will be announced in advance and will be open to the public. The Oversight Committee shall meet at least once but no more than four times per year.

The responsibilities of this Committee include:

- Reviewing Plan expenditures on an annual basis to ensure they conform to the Plan.
 - Reviewing the annual audit and report prepared by an independent auditor and submitting its recommendations and oversight report thereon.
- e. All actions, including decisions about selecting projects for funding, will be made by the Board in public meetings in compliance with the Brown Act
 - f. Annual levies of the parcel tax would start in 2015.
 - g. To the extent allowable by law, all residential and non-residential parcels will be uniformly taxed.

- h. The revenue raised by the Measure for the purposes described in this Plan will be administered by the Santa Clara County Open Space Authority. All funds shall be placed in a separate account to hold all funds collected pursuant to the Measure.

2. Additional Allocation Criteria and Community Benefits

The Santa Clara Open Space Authority shall ensure that the revenue generated by the Measure is spent in the most efficient and effective manner possible, consistent with serving the public interest and in accordance with existing law and this Plan.

- a. The Santa Clara Open Space Authority shall make all final decisions regarding implementation of the Plan and funding for any specific high priority projects. The Board shall give priority to projects within its jurisdiction that meet multiple objectives of the *Santa Clara Valley Greenprint*, including one or more of the following objectives:
 - i. Have a significant positive effect on the health of land, water, and wildlife habitat, safety and quality of life for OSA residents.
 - ii. Provide for geographic distribution of projects across OSA's jurisdiction.
 - iii. Increase impact by leveraging state and federal resources as well as public/private partnerships.
 - iv. Strengthen connections between communities and open space through regionally-significant trails and transit access.
 - v. Benefit the economy and sustainability of the region by investing in nature-based infrastructure and local workforce development.
 - vi. Engage youth and young adults in local workforce development and assist them in gaining skills and experience related to protection and stewardship of the natural environment, wildlife, water resources and agricultural lands.
- b. The Board shall conduct one or more public meetings annually to gain public input on selection of project grants to expend revenues generated by the Measure.
- c. The Santa Clara County Open Space Authority may accumulate revenue over multiple years so that sufficient funding is available for larger and long-term projects. All interest income shall be used for the purposes identified in this Plan.
- d. No more than 5% of the revenue generated by this measure and provided to the Santa Clara County Open Space Authority may be used for administrative expenses.
- e. Costs of performing or contracting for project related work shall be paid from the revenues of the measure allocated to the appropriate purpose and project.
- f. An annual independent audit shall be conducted to assure that the revenues expended by the Santa Clara County Open Space Authority under this Plan are necessary and reasonable in carrying out its responsibilities under this Plan.

- g. To the extent permitted by law, up to one-tenth of one percent (0.1 %) of the gross proceeds of the parcel tax shall be made available for the Oversight Committee’s activities.
- h. Parcel tax proceeds are intended to augment annual support for the Santa Clara County Open Space Authority and do not substitute for individual city or County obligations. Monies from this program may not go to a city's or the County's "General Fund."



2020 Expenditure Plan

The Open Space, Wildlife Habitat, Clean Water and Increased Public Access Measure Expenditure Plan

A. Summary

Since its creation in 1993, the Santa Clara Valley Open Space Authority (Authority) has protected over 26,000 acres of open space and natural areas, preserving the natural beauty and health of our area, and protecting our region's water resources, air quality, wildlife, and scenic views for residents today and future generations. Governed by a publicly elected board of directors, the Authority has used funds wisely, bringing in state, federal, and private grant money, and providing annual financial audits in a transparent public process.

However, the Authority currently faces significant challenges. As our region continues to grow, protecting hillsides and open spaces are increasingly important to our community. If extended by voters, the Open Space, Wildlife Habitat, Clean Water, and Increased Public Access Measure (Measure) would allow the Authority to continue to protect and preserve natural open space areas for future generations by: (1) protecting open space, redwood forests, wildlife habitat, scenic hillsides, and agricultural land; (2) protecting land around creeks, rivers, and streams to prevent pollution and improve local water quality and supply; (3) opening, improving and maintaining parks, open space, and trails; and (4) providing urban open space, parks, and environmental education through a competitive Urban Grant Program.

The Authority will ensure that the revenue generated is spent in an efficient and effective manner, consistent with serving the public interest and in accordance with existing law. The Authority shall use the funding only for the purposes set forth in this Expenditure Plan (Plan) and it shall give priority to programs in this Plan.

The potential projects listed in the Plan were informed by the *Santa Clara Valley Greenprint*, a vision plan for the future of the region's open space developed by the Santa Clara Valley Open Space Authority. If approved, the proceeds from the parcel tax would be allocated to fund projects distributed throughout the Authority's jurisdiction including, but not limited to, those listed below.

The Authority may annually review and propose amendments to the Plan to provide for the use of additional federal, state, and local funds, to account for unexpected revenues, or to take into consideration unforeseen circumstances, provided, however, that all funds collected pursuant to the Measure shall be used solely for the purposes of this Plan as presented to the voters.

B. Program Descriptions**1. Protect Open Space, Redwood Forests, Wildlife Habitat, Scenic Hillsides, and Agricultural Land**

The purpose of this program is to permanently protect new open space and agricultural lands essential to completing connections in the region's park, open space, and habitat systems as identified in the Authority's *Santa Clara Valley Greenprint*, the *County Parks Acquisition Plan*, *Santa Clara Valley Habitat Plan*, *Santa Clara Valley Agricultural Plan*, *Santa Clara County Regional Conservation Investment Strategy*, and other adopted plans.

- a. Ensure permanent protection of essential open space, water resources, and wildlife habitat. Areas for open space protection can include but are not limited to Baylands, East San Jose Foothills, Upper Alameda Creek Watershed, Coyote Ridge, Coyote Valley, Upper Coyote Creek Watershed, Southern Santa Cruz Mountains, Sargent Hills, Upper Pajaro River Watershed, Pacheco Creek Watershed. Protect, restore, and enhance critical habitat to implement the Valley Habitat Plan such as serpentine grasslands, wetlands, redwood forests, and riparian areas along creeks, rivers, and streams.
- b. Leverage public and private funding and coordinate protection efforts to complete critical open space preservation.
- c. Conserve the region's last remaining farmland and rangelands in and around areas such as the Coyote Valley, Morgan Hill, San Martin, Gilroy, and Pajaro River to protect local food sources and address food security, reduce impacts of climate change, and maintain environmental benefits provided by agricultural lands including water supply, groundwater recharge, flood risk reduction, habitat protection, and climate resilience.
 - i. Conserve high priority farmland and rangelands through voluntary agreements with willing landowners.
 - ii. Provide grants to resource conservation districts (RCDs) and other agricultural organizations to work with farmers and ranchers to promote natural resource stewardship.

2. Protect Land around Creeks, Rivers, and Streams to Prevent Pollution and Improve Local Water Quality and Supply

The purpose of this program is to protect and restore natural areas that buffer our rivers, creeks, and streams, including the Guadalupe River, Coyote Creek, Fisher Creek, Penitencia Creek, Upper Alameda Creek, Uvas Creek, Llagas Creek, Pacheco Creek, Pescadero Creek, and the Pajaro River to protect water supply, water quality, and enhance resilience to climate change.

- a. Protect clean, safe drinking water supplies by restoring and enhancing natural areas around local creeks, rivers, and streams from their headwaters in the hills to the Bay.
- b. Preserve key open space areas to enhance local water supply and recharge groundwater.
- c. Protect water resources, floodplains, wetlands, and riparian corridors.

3. Open, Improve and Maintain Parks, Open Space, and Trails

The purpose of this program is to maintain existing open space preserves; safeguard the health of natural areas and wildlife habitat; reduce the risk of wildfires; provide more hiking and walking trails; and increase opportunities for environmental education experiences.

- a. Open and expand preserves on existing lands, including more trails for walking, hiking, and biking and more access points for residents. Develop science-based environmental education programs and facilities, trails, and other public access facilities in appropriate locations including East San Jose/Penitencia Creek/Milpitas Foothills, Coyote Ridge, Coyote Valley, Morgan Hill/El Toro Peak, Almaden Valley/Santa Teresa Hills.
- b. Construct new trails and close gaps in regional hiking and bicycle trails (such as the Bay Area Ridge Trail, San Francisco Bay Trail, Coyote Creek Trail, Juan Bautista de Anza National Historic Trail, and Guadalupe River Trail).
- c. Reduce the risk of wildfire near communities, protect air and water quality, and control invasive, non-native weeds through vegetation management in coordination with fire districts, cities, and the County.
- d. Provide safe, well-maintained open space preserves and recreational trails, with connections to the Bay Area Ridge Trail, San Francisco Bay Trail, Guadalupe River Trail, and Coyote Creek Trail.
- e. Work with qualified organizations and entities, including, but not limited to, the California Conservation Corps, the San Jose Conservation Corps, AmeriCorps, and others to maintain facilities in open space preserves including, but not limited to, cultural and historic structures, bridges, roads, and other infrastructure.
- f. Prevent pollution and vandalism of open space, water resources, and wildlife habitat.

4. Urban Open Space, Parks, and Environmental Education Program

The purpose of this Grant Program is to assist municipalities, schools, and applicable nonprofit organizations with projects within the cities of Milpitas, Santa Clara, San Jose, Campbell, Morgan Hill, and urban County areas to create healthy and safe open space and park areas for their communities by creating or improving parks, preserving open space, and maintaining or creating trails; enhancing and restoring habitat, natural resources, and water resources; and enhancing access to healthy food through urban farms and gardens.

No more than 25 percent of the revenues generated by this funding measure will be made available for this grant program. The Urban Grant Program would provide grants to cities, the County, schools, and nonprofit organizations on a competitive basis according to the Urban Open Space Project Criteria listed below. Funds shall be available through an annual grant allocation process designed by the Santa Clara Valley Open Space Authority, in coordination with cities, the County, schools, and non-profit organizations within the boundaries of the Authority. Grant allocations shall reward a diversity of projects, with the goal of achieving a reasonable geographic distribution across the Santa Clara Valley Open Space Authority's jurisdiction. The grant allocation process and the individual projects shall be subject to approval by the Authority's Governing Board of Directors ("Board").

Urban Open Space Project Criteria:

- a. Protect and enhance open space and wildlife habitat, creeks and streams, and develop land for nature-based parks, open space preserves, trails, and greenbelts in urban areas.
- b. Create, develop, and implement pedestrian and bicycle trail connections to connect urban communities to local and regional parks, open space preserves, creeks and flood control channels, to improve public health (e.g., San Francisco Bay Trail, Bay Area Ridge Trail, Coyote Creek, Guadalupe River, Silver Creek, Thompson Creek, Penitencia Creek, Three Creeks Trail, Five Wounds Trail).
- c. Implement urban tree planting and tree protection/maintenance.
- d. Create and expand urban farms and community gardens to support public health and local agriculture.
- e. Expand nature and science-based environmental education programs and youth engagement projects.

EXAMPLES OF PROJECTS THAT COULD POTENTIALLY BE FUNDED BY THE MEASURE INCLUDE BUT ARE NOT LIMITED TO:

1. Alviso Adobe and Higuera Adobe Parks: Establish Alviso Adobe as a historical museum, and refurbish the historic Caretaker's Cottage in Higuera Adobe Park in collaboration with the City of Milpitas
2. Calera Creek Connection: Partner with City of Milpitas to connect the Bay Area Ridge Trail to the Higuera Adobe via a proposed Calera Creek Trail
3. San Francisco Bay Trail: Increase public access by closing gaps in Bay Trail walking and biking trail connections
4. Bay Area Ridge Trail: Increase public access by closing gaps in the Bay Area Ridge Trail
5. San Francisco Bay Area Water Trail: Provide Water Trail public access amenities at Alviso Marina
6. Ulistac Natural Area: Increase educational programming and restore natural habitat
7. Sierra Vista Open Space Preserve: Expand trail system and connections to regional trails, restore ponds and wildlife habitats for endangered species
8. BART/Penitencia Creek Trail Connection: Complete trail linking Berryessa BART station via Penitencia Creek to Alum Rock Park and Sierra Vista Open Space Preserve
9. Guadalupe River Nature Center and Environmental Programming: Partner with nonprofits to establish outdoor environmental education learning center and expand interpretive programming for youth and families
10. Five Wounds Trail: Acquire right of way to develop new trails connecting Coyote Creek Trail to Berryessa BART station in coordination with City of San Jose, County Parks, and Valley Transportation Authority
11. Coyote Creek Trail: Expand walking and biking trail connections and restore natural habitats, including connections to Coyote Valley
12. Silver Creek Trail: Increase walking and biking opportunities by creating connections to regional trails, parks, and transit
13. Three Creeks Trail: Complete eastern trail alignment
14. San Tomas Aquino/Saratoga Creek Trail: Construct walking and biking trails through cities of Campbell and Santa Clara
15. Thompson Creek Trail Improvements: Complete walking and biking trail improvements
16. Guadalupe River Trail: Expand walking and biking trail connections and trail amenities
17. Martial Cottle Park: Partner with County Parks to enhance trail connections to Blossom Hill Light Rail Station and implement recreation, farm demonstration, and wetland restoration projects
18. Santa Teresa Foothills: Partner with City of San Jose, County, and Santa Teresa Foothills Neighborhood Association to protect land and develop regional ridgeline trail connection to local and regional parks and open space
19. Coyote Ridge Open Space Preserve: Open new public trailhead and parking area with connections to Bay Area Ridge Trail, regional trails, and protect and restore additional open space and habitat for endangered species
20. Coyote Valley Open Space Preserve: Build trail accessible to seniors and people with disabilities, expand protected areas and trail system, and restore and enhance wetland and endangered species habitat
21. North Coyote Valley Conservation Area: Expand protected areas and create a regionally significant preserve system that includes wildlife movement corridors, enhanced floodplains, restored

wetlands and habitats, public trails and nature-based recreational amenities, environmental education programs, and agritourism.

22. Youth Agricultural Education and Demonstration Farm: Partner with cities, schools, nonprofits, and agricultural organizations to establish an agricultural education and demonstration farm in the Coyote Valley Greenbelt
23. Rancho Cañada del Oro Open Space Preserve: Restore wildlife habitat, expand educational opportunities, and construct new public access amenities and trail connection to Blair Ranch
24. El Toro Peak: Partner with City of Morgan Hill to establish an open space preserve with staging area and trails, and restore natural habitat
25. Southern Santa Cruz Mountains: Establish regional trail connections between Uvas Reservoir, Uvas County Park, and Rancho Cañada del Oro Open Space Preserve, develop new staging area, protect wildlife corridor, and manage wildland-urban interface for fire safety
26. Palassou Ridge: Establish open space preserve, restore historic stone house as a visitor amenity, develop multi-use trails connecting to Henry Coe State Park, implement wildfire prevention, and habitat restoration projects
27. Diablo Foothills: Enhance public access with new staging area and trails, restore grasslands, wetlands, and wildlife habitat
28. Sargent Hills: Protect wildlife corridor, create staging area, public access and regional trail connections to the Bay Area Ridge Trail
29. South County Agriculture: Conserve working farms and ranches near Morgan Hill, San Martin, and Pajaro River for greenbelts and agricultural viability and to enhance flood control, water quality, wildlife habitat, and connectivity
30. Youth Conservation Internship Program: Establish new internship program for youth from underserved communities to develop conservation and career skills
31. Backcountry Camping: Build new backcountry camping sites, increase access for underserved youth by partnering with community-based nonprofits
32. Work with Cities, County, parks, and transportation agencies on the feasibility of equitable and sustainable transportation alternatives to connect people to parks, open space, and trails

C. Administrative Provisions and Fiscal Safeguards

1. Citizen Oversight and Independent Financial Audits

In order to ensure accountability, transparency, and public oversight of all funds collected and allocated under this Measure and to comply with state law, all of the following shall apply:

- a. On or before January 1 of each fiscal year, the Authority's chief fiscal officer shall file an annual report with the Board that explains (1) the amount of funds collected and expended under this Measure and (2) the status of the projects authorized to be funded by this revenue in compliance with Government Code Sections 50075.1(d), 50075.3.
- b. The Independent Oversight Committee created in 2015 to review the expenditures of all parcel tax revenues collected under Measure Q shall continue to review the expenditures of all parcel tax revenues collected under this Measure. The resolution the Board adopted on April 23, 2015 to govern the terms, composition, and specific duties of the Oversight

Committee shall continue to govern the Oversight Committee, unless amended, and any such amendments shall be consistent with the “Citizen Oversight and Independent Financial Audits” provisions set forth in this Part C(1). The Oversight Committee will consist of seven at-large members. In making appointments to the Oversight Committee, the Board will seek to reflect the demographic diversity of its jurisdiction.

- c. Members of the Oversight Committee shall be appointed by the Board and shall be residents within the Santa Clara Valley Open Space Authority’s jurisdiction who are neither elected officials of any government, nor employees from any agency or organization that directly benefits financially from the proceeds of the parcel tax.
- d. Oversight Committee meetings will be announced in advance and will be open to the public. The Oversight Committee shall meet at least once but no more than four times per year.

The responsibilities of this Committee include:

- Reviewing Plan expenditures on an annual basis to ensure they conform to the Plan.
 - Reviewing the annual financial audit and report prepared by an independent financial auditor and submitting its recommendations and oversight report thereon.
- e. All actions, including decisions about selecting projects for funding, will be made by the Board in public meetings in compliance with the Brown Act.
 - f. To the extent allowable by law, all residential and non-residential parcels will be uniformly taxed.
 - g. The revenue raised by the Measure for the purposes described in this Plan will be administered by the Santa Clara Valley Open Space Authority. All funds shall be placed in a separate account to hold all funds collected pursuant to the Measure.

2. Additional Allocation Criteria and Community Benefits

The Authority shall ensure that the revenue generated by the Measure is spent in an efficient and effective manner, consistent with serving the public interest and in accordance with existing law and this Plan.

- a. The Authority shall make all final decisions regarding implementation of the Plan and funding for any specific project. The Board shall give priority to projects within its jurisdiction that meet multiple objectives of the *Santa Clara Valley Greenprint*, including one or more of the following objectives:

- i. Have a significant positive effect on the health of land, water, and wildlife habitat, safety, and quality of life for residents within the Authority's jurisdiction.
 - ii. Provide for geographic distribution of projects across the Authority's jurisdiction.
 - iii. Increase impact by leveraging state and federal resources as well as public/private partnerships.
 - iv. Strengthen connections between communities and open space through regionally-significant trails and transit access.
 - v. Benefit the economy, sustainability, and climate resiliency of the region by investing in nature-based infrastructure and local workforce development.
 - vi. Engage youth and young adults in local workforce development and assist them in gaining skills and experience related to protection and stewardship of the natural environment, wildlife, water resources, and agricultural lands.
- b. The Board shall conduct one or more public meetings annually to gain public input on selection of project grants to expend revenues generated by the Measure.
- c. The Santa Clara Valley Open Space Authority may accumulate revenue over multiple years so that sufficient funding is available for larger and long-term projects. All interest income shall be used for the purposes identified in this Plan.
- d. Revenue generated by this measure and provided to the Santa Clara Valley Open Space Authority may also be used for such administrative expenses as the Board determines are reasonable and necessary through its annual budget process or other appropriate mechanism.
- e. Costs of performing or contracting for project-related work shall be paid from the revenues of the measure and allocated to the appropriate purpose and project.
- f. An annual independent financial audit shall be conducted.
- g. To the extent permitted by law, up to one-tenth of one percent (0.1 %) of the gross proceeds of the parcel tax shall be made available for the Oversight Committee's activities.
- h. Parcel tax proceeds are intended to augment annual support for the Authority and do not substitute for individual city or County obligations. Monies from this program may not go to a city's or the County's "General Fund."
