

Survey Responses: Accessibility in Open Space

The Santa Clara Valley Open Space Authority (Authority) distributed a survey in an effort to collect information about the preferences and priorities of the community who have an interest in accessible and inclusive open spaces.

The survey was available in the five Santa Clara County threshold languages: English, Chinese, Spanish, Tagalog, and Vietnamese. The survey was distributed through multiple outlets, including through the following community organization newsletters:

- Santa Clara Valley Open Space Authority's July Newsletter
- Silicon Valley Independent Living Center E-news Post
- Age Friendly Santa Clara County August Newsletter
- State Council on Developmental Disabilities Central Coast Office Newsletter

The Authority received nine (9) responses total: eight (8) in English and one (1) in Spanish. The full survey content is included below, followed by individual responses. Information about survey respondents has been redacted.

Accessibility in Open Space Survey Questions

The Santa Clara Valley Open Space Authority (Open Space Authority) is seeking to understand the perspectives and priorities of community members in accessing open space facilities, programs, and related services.

The Open Space Authority is currently in the process of developing an Americans with Disabilities Act (ADA) Self-Evaluation and Transition Plan, and as part of this process, will be evaluating facilities, programs, services, and communications for barriers to accessibility. We will take these findings and develop an implementation plan for addressing barriers and improving operations to increase accessibility.

Thank you for your interest in this process and your time to provide us with feedback and insights.

1. If you would like to share information about yourself, including your name, contact information, or organization with the Open Space Authority, please provide here:
2. Have you ever visited an Open Space Authority preserve?
 - a. Yes
 - b. No
 - c. Unsure
3. If yes, which one(s)?

- a. Coyote Valley Open Space Preserve
 - b. Rancho Cañada del Oro Open Space Preserve
 - c. Sierra Vista Open Space Preserve
 - d. Máyyan 'Ooyákma – Coyote Ridge Open Space Preserve
 - e. Unsure
4. Which Open Space Authority preserve is most important to you?
- a. Coyote Valley Open Space Preserve
 - b. Rancho Cañada del Oro Open Space Preserve
 - c. Sierra Vista Open Space Preserve
 - d. Máyyan 'Ooyákma – Coyote Ridge Open Space Preserve
 - e. Unsure
5. Have you ever participated in an Open Space Authority event or program?
- a. Yes
 - b. No
 - c. Unsure
6. If yes, which one(s)?
- a. Docent-led guided hike
 - b. Trail building event
 - c. "Art-in-Nature" event (e.g. group nature journaling, poetry, photography, painting, crafts)
 - d. Astronomy event (stargazing)
 - e. "Open Access" event (self-led hike at a closed preserve)
 - f. Virtual educational programming
 - g. School program
 - h. Specially adapted program
 - i. Restoration event (e.g. trash clean up, fence pulling, invasive plant removal)
 - j. Other
7. Are there Open Space Authority facilities, programs, or activities that you or someone you know cannot participate in or enjoy because of a disability?
- a. Yes
 - b. No
 - c. Unsure
8. If your answer above was "Yes," please describe.
9. Are you able to find information about accessible facilities or programs on the Open Space Authority's website?
- a. Yes
 - b. No
 - c. Unsure
10. Please rank the following Open Space Authority amenities in order of importance to you. Use the up/down arrows to the right on each line to move the amenity type in order of priority or importance, beginning with the most important.

- a. Trails
 - b. Picnic areas
 - c. Benches and other seating areas
 - d. Shade structures
 - e. Parking
 - f. Interpretive/educational features (e.g. signage)
 - g. Cultural and historic resources
 - h. Restrooms
 - i. Other
11. If you answered "Other" above, please describe.
 12. How would you like to see the Open Space Authority exceed minimum accessibility standards?
 13. Is there anything else you would like to share?

Thank you for your input!

Please find more information about the Open Space Authority's ADA Transition Plan project here: <https://www.openspaceauthority.org/our-work/current-projects/Americans-with-Disabilities-Act-ADA-Self-Evaluation-and-Transition-Plan.html>.

Survey Response #1

1. If you would like to share information about yourself, including your name, contact information, or organization with the Open Space Authority, please provide here:
 - a. [Redacted]
2. Have you ever visited an Open Space Authority preserve?
 - a. Yes
3. If yes, which one(s)?
 - a. Rancho Cañada del Oro Open Space Preserve
4. Which Open Space Authority preserve is most important to you?
 - a. Unsure
5. Have you ever participated in an Open Space Authority event or program?
 - a. No
6. If yes, which one(s)?
 - a. [N/A]
7. Are there Open Space Authority facilities, programs, or activities that you or someone you know cannot participate in or enjoy because of a disability?
 - a. Yes
8. If your answer above was "Yes," please describe.
 - a. Some trails at RCAN that are inaccessible. Website is difficult to find information about accessible facilities.

9. Are you able to find information about accessible facilities or programs on the Open Space Authority's website?
 - a. Unsure
10. Please rank the following Open Space Authority amenities in order of importance to you. Use the up/down arrows to the right on each line to move the amenity type in order of priority or importance, beginning with the most important.
 - a. Trails;
 - b. Parking;
 - c. Restrooms;
 - d. Shade structures;
 - e. Interpretive/educational features (e.g. signage);
 - f. Picnic areas;
 - g. Cultural and historic resources;
 - h. Benches and other seating areas;
 - i. Other;
11. If you answered "Other" above, please describe.
 - a. Information on website or phone # about accessible features.
12. How would you like to see the Open Space Authority exceed minimum accessibility standards?
 - a. Front door to open space is providing adequate information to make informed decisions. Not see ADA as minimum, exceed maximum. Especially in terms of parking. Parking requirements are not consistent with demographics (# accessible spaces). Making programming more inclusive. Hiring staff with disabilities or advisory group. Offering accessible transportation, important barrier. Para transit will not take someone to a park or place that does not have an address (drop-off point). Paratransit drop-off point (address) available on website.
13. Is there anything else you would like to share?
 - a. Another good question: What barriers prevent you from getting to preserves?
 - Transportation
 - Host, guide, partner
 - Weather
 - Schedule, programmatic start timesWhen changes are made to website, don't bury it deep, make visible upfront. Make readily available. Have people with disabilities in pics shown on website and in other marketing materials. Have materials available in alternative format (brochure?). Having adaptive equipment that people can borrow that allows them to use accessible trails/features. (Allow more trails to be accessible to visitors). Exceed minimums in dimensions, quantities. Group picnic areas where more than one person in a wheelchair could sit at the table.

Survey Response #2

1. If you would like to share information about yourself, including your name, contact information, or organization with the Open Space Authority, please provide here:
 - a. [Redacted]
2. Have you ever visited an Open Space Authority preserve?
 - a. Yes
3. If yes, which one(s)?
 - a. Coyote Valley Open Space Preserve
 - b. Rancho Cañada del Oro Open Space Preserve
4. Which Open Space Authority preserve is most important to you?
 - a. Rancho Cañada del Oro Open Space Preserve
5. Have you ever participated in an Open Space Authority event or program?
 - a. Yes
6. If yes, which one(s)?
 - a. Zoom presentations on ADA and accessible parks and trails.
7. Are there Open Space Authority facilities, programs, or activities that you or someone you know cannot participate in or enjoy because of a disability?
 - a. Unsure
8. If your answer above was "Yes," please describe.
9. Are you able to find information about accessible facilities or programs on the Open Space Authority's website?
 - a. Yes
10. Please rank the following Open Space Authority amenities in order of importance to you. Use the up/down arrows to the right on each line to move the amenity type in order of priority or importance, beginning with the most important.
 - a. Trails;Parking;
 - b. Restrooms;
 - c. Shade structures;
 - d. Picnic areas;
 - e. Benches and other seating areas;
 - f. Cultural and historic resources;
 - g. Interpretive/educational features (e.g. signage);
 - h. Other;
 - i. Trails
11. If you answered "Other" above, please describe.
12. How would you like to see the Open Space Authority exceed minimum accessibility standards?

- a. Have the disability community more involved. Having a person, like in a wheelchair, demonstrate in person on where there are access issues.
13. Is there anything else you would like to share?
- a. Continue asking for feedback from the disability community.

Survey Response #3

1. If you would like to share information about yourself, including your name, contact information, or organization with the Open Space Authority, please provide here:
 - a. [Redacted]
2. Have you ever visited an Open Space Authority preserve?
 - a. Yes
3. If yes, which one(s)?
 - a. Coyote Valley Open Space Preserve
 - b. Rancho Cañada del Oro Open Space Preserve
 - c. Sierra Vista Open Space Preserve
 - d. Máyyan 'Ooyákma – Coyote Ridge Open Space Preserve
 - e. Also visited closed preserves.
4. Which Open Space Authority preserve is most important to you?
 - a. All of them! Special accessible characteristics and views. Plus exercise.
5. Have you ever participated in an Open Space Authority event or program?
 - a. Unsure
6. If yes, which one(s)?
 - a. Interested in collaborating on programs.
7. Are there Open Space Authority facilities, programs, or activities that you or someone you know cannot participate in or enjoy because of a disability?
 - a. Yes
8. If your answer above was "Yes," please describe.
 - a. Challenges with hills.
9. Are you able to find information about accessible facilities or programs on the Open Space Authority's website?
 - a. No
10. Please rank the following Open Space Authority amenities in order of importance to you. Use the up/down arrows to the right on each line to move the amenity type in order of priority or importance, beginning with the most important.
 - a. Parking;
 - b. Restrooms;
 - c. Benches and other seating areas;
 - d. Trails;
 - e. Shade structures;

- f. Picnic areas;
 - g. Interpretive/educational features (e.g. signage);
 - h. Cultural and historic resources;
 - i. Other;
11. If you answered "Other" above, please describe.
- a. Benches after 1-ish mile of trail. Making interpretive signage accessible, or audio for hearing-impaired. Having interpretive materials available on website. Ability to thermo-regulate gets worse as people age. May to October difficult to find shaded areas.
12. How would you like to see the Open Space Authority exceed minimum accessibility standards?
- a. With walkers and canes, important to have relatively stable terrain. Hard with rocks and gravel. For visual impairment, main thing is canes (plus guide dogs). Ability to feel edge of trail (differentiate surfaces between trail surface what is not trail). Mountain bike warnings for visual and hearing impairment, consider some trails that are just pedestrian.
13. Is there anything else you would like to share?
- a. With older adults and general and people with limited mobility (including porta-potty). Having the ability to go to the bathroom. Important for visitors to stay hydrated plus providing restroom. Coyote Valley to picnic area is good. RCAN is good loop trail with wildflowers. Taking visually impaired people on meadow trail.

Survey Response #4

1. If you would like to share information about yourself, including your name, contact information, or organization with the Open Space Authority, please provide here:
 - a. [Redacted]
2. Have you ever visited an Open Space Authority preserve?
 - a. No
3. If yes, which one(s)?
 - a. [N/A]
4. Which Open Space Authority preserve is most important to you?
 - a. Unsure
5. Have you ever participated in an Open Space Authority event or program?
 - a. No
6. If yes, which one(s)?
 - a. [N/A]
7. Are there Open Space Authority facilities, programs, or activities that you or someone you know cannot participate in or enjoy because of a disability?
 - a. Yes

8. If your answer above was "Yes," please describe.
 - a. Up until 2021, I did not have a vehicle to travel to the open spaces and public transportation to and from is difficult. Ultimately, the trip is not worth it because of the extra barriers that will likely be present to a wheelchair user without access to devices that would allow me to take to the trails with less worry.
9. Are you able to find information about accessible facilities or programs on the Open Space Authority's website?
 - a. No
10. Please rank the following Open Space Authority amenities in order of importance to you. Use the up/down arrows to the right on each line to move the amenity type in order of priority or importance, beginning with the most important.
 - a. Benches and other seating areas;
 - b. Interpretive/educational features (e.g. signage)
 - c. ;Shade structures;
 - d. Parking;
 - e. Restrooms;
 - f. Trails;
 - g. Picnic areas;
 - h. Cultural and historic resources;
 - i. Other;
11. If you answered "Other" above, please describe.
 - a. [N/A]
12. How would you like to see the Open Space Authority exceed minimum accessibility standards?
 - a. The best way to exceed minimum accessibility standards is to engage the community and learn from those with disabilities on what they need and how to better meet those needs. This outreach is an opportunity to discuss the needs and dreams of adults with disabilities, families with a disabled member, seniors, and children. Programs may need to be created that invite disabled people into your spaces to create the opportunity to learn from one another. There are many access barriers built into the system s (e.g., inadequate transportation, paratransit program gaps, cost of vehicles and adaptive equipment, and more). Those barriers also impact accessibility and the Open Space Authority may need to get creative about addressing those gaps.

Training staff becomes an important element too because when the person who is assigned ADA knowledge isn't present, their answers reflect on the overall accessibility of the Open Space Authority and its programs. Separate programs are not equal and the process of separating them excludes people. When all employees have knowledge around accessibility variables, then trust improves and access and communication does also.

13. Is there anything else you would like to share?

- a. For years, I thought I just did not deserve access to open spaces because of the needs of the non-disabled community. Who am I to ask for these changes that are actually counter to nature on some levels. So I am not as informed about the experience of the Open Spaces as with other spaces. I am a wheelchair user and also neurodiverse so these realities give me a more creative approach to problems at times. I see the potential to create amazing programs by connecting with the members of the disability community.

With the disability community, novel solutions can be created especially if we think outside the box. As those with disabilities feel comfortable and listened to, you will have more feedback to include in your programs.

Part of exceeding accessibility elements is in the intentional inclusion of those voices that are not often heard from and often are misunderstood.

Survey Response #5

1. If you would like to share information about yourself, including your name, contact information, or organization with the Open Space Authority, please provide here:
 - a. [Redacted]
2. Have you ever visited an Open Space Authority preserve?
 - a. Yes
3. If yes, which one(s)?
 - a. Coyote Valley Open Space Preserve
 - b. Rancho Cañada del Oro Open Space Preserve
 - c. Sierra Vista Open Space Preserve
 - d. Máyyan 'Ooyákma – Coyote Ridge Open Space Preserve
 - e. Some closed preserves too.
4. Which Open Space Authority preserve is most important to you?
 - a. Máyyan 'Ooyákma – Coyote Ridge Open Space Preserve
5. Have you ever participated in an Open Space Authority event or program?
 - a. Yes
6. If yes, which one(s)?
 - a. Docent-led guided hike
 - b. Trail building event
 - c. "Art-in-Nature" event (e.g. group nature journaling, poetry, photography, painting, crafts)
 - d. Astronomy event (stargazing)
 - e. "Open Access" event (self-led hike at a closed preserve)

- f. Virtual educational programming
 - g. School program
 - h. Specially adapted program
 - i. Restoration event (e.g. trash clean up, fence pulling, invasive plant removal)
7. Are there Open Space Authority facilities, programs, or activities that you or someone you know cannot participate in or enjoy because of a disability?
 - a. Senior citizens (65+) as well as people using wheelchairs may have challenges accessing trails due to difficulty of terrain or utilities/phone reception (infrastructure) for safety.
 8. If your answer above was "Yes," please describe.
 - a. Drive up to Metcalf, driving up to top and walking along the Ridge. Public hike that was simultaneously virtual. First hike by Saved by Nature.
 9. Are you able to find information about accessible facilities or programs on the Open Space Authority's website?
 - a. Yes
 10. Please rank the following Open Space Authority amenities in order of importance to you. Use the up/down arrows to the right on each line to move the amenity type in order of priority or importance, beginning with the most important.
 - a. Other;
 - b. Cultural and historic resources;
 - c. Interpretive/educational features (e.g. signage);
 - d. Parking;
 - e. Trails;
 - f. Restrooms;
 - g. Shade structures;
 - h. Benches and other seating areas;
 - i. Picnic areas;
 11. If you answered "Other" above, please describe.
 - a. Preserve and nature protection.
 12. How would you like to see the Open Space Authority exceed minimum accessibility standards?
 - a. It would be helpful to have shade structures for wind and rain protection for programming. RCAN has best ADA accessible loop (range of types of features you can see - oaks, wildflowers, creek, wildlife) but only 1/2 mile. Having firm and stable trail surfaces. Exceeding accessibility standards by providing additional mileage so that it is still accessible but can provide a more challenging outing by distance. Providing trail distance with a range of experiences along the trail. Thinking about the quality of experience.
 13. Is there anything else you would like to share?

Survey Response #6

1. If you would like to share information about yourself, including your name, contact information, or organization with the Open Space Authority, please provide here:
 - a. [Redacted]
2. Have you ever visited an Open Space Authority preserve?
 - a. Unsure
3. If yes, which one(s)?
 - a. Do not know.
4. Which Open Space Authority preserve is most important to you?
 - a. Unsure
5. Have you ever participated in an Open Space Authority event or program?
 - a. Unsure
6. If yes, which one(s)?
 - a. [N/A]
7. Are there Open Space Authority facilities, programs, or activities that you or someone you know cannot participate in or enjoy because of a disability?
 - a. Unsure
8. If your answer above was "Yes," please describe.
 - a. [N/A]
9. Are you able to find information about accessible facilities or programs on the Open Space Authority's website?
 - a. Unsure
10. Please rank the following Open Space Authority amenities in order of importance to you. Use the up/down arrows to the right on each line to move the amenity type in order of priority or importance, beginning with the most important.
 - a. Parking;
 - b. Restrooms;
 - c. Benches and other seating areas;
 - d. Picnic areas;
 - e. Trails;
 - f. Shade structures;
 - g. Interpretive/educational features (e.g. signage);
 - h. Cultural and historic resources;
 - i. Other;
11. If you answered "Other" above, please describe.
 - a. Clear indication of where wheelchair accessible elements are located on all maps and that this same information is accessible by phone or app for those who are low vision/blind.
12. How would you like to see the Open Space Authority exceed minimum accessibility standards?

- a. Going beyond standard ADA thresholds to an even more diverse series of physical and programmatic offerings to as wide a variety of disabilities as possible. This review starts this process, but invite people with lived experiences to review [progress at every stage- including "boots on the ground" in these open spaces.
13. Is there anything else you would like to share?
- a. [N/A]

Survey Response #7

1. If you would like to share information about yourself, including your name, contact information, or organization with the Open Space Authority, please provide here:
 - a. [Redacted]
2. Have you ever visited an Open Space Authority preserve?
 - a. No
3. If yes, which one(s)?
 - a. [N/A]
4. Which Open Space Authority preserve is most important to you?
 - a. ANY Open Land is very important to me.
5. Have you ever participated in an Open Space Authority event or program?
 - a. No
6. If yes, which one(s)?
 - a. [N/A]
7. Are there Open Space Authority facilities, programs, or activities that you or someone you know cannot participate in or enjoy because of a disability?
 - a. Yes
8. If your answer above was "Yes," please describe.
 - a. I work with older adults who may not be able to walk as far or steep hills. However, our Citywide Team would like to organize events where the seniors from all Centers can go together on their own and partake an event outdoors. For instance, my parents used to love to go camping. Now they can't. I would love to get them outdoors to enjoy but my mom cannot walk fast or far.
9. Are you able to find information about accessible facilities or programs on the Open Space Authority's website?
 - a. Unsure
10. Please rank the following Open Space Authority amenities in order of importance to you. Use the up/down arrows to the right on each line to move the amenity type in order of priority or importance, beginning with the most important.
 - a. Benches and other seating areas;
 - b. Other;

- c. Picnic areas;
 - d. Shade structures;
 - e. Restrooms;
 - f. Trails;
 - g. Cultural and historic resources;
 - h. Parking;
 - i. Interpretive/educational features (e.g. signage);
11. If you answered "Other" above, please describe.
 - a. Safe walking paths for those with walkers, canes, or wheelchairs.
 12. How would you like to see the Open Space Authority exceed minimum accessibility standards?
 - a. If you have historical sites like the new one you opened in Coyote Valley, could there be any way to take seniors on the trail such as a small tractor with a wagon behind; similar to hay rides. So those with disabilities can get farther and enjoy these beautiful spaces.
 13. Is there anything else you would like to share?
 - a. I love what you do to preserve open space in the bay area! Thank you!!

Survey Response #8

1. If you would like to share information about yourself, including your name, contact information, or organization with the Open Space Authority, please provide here:
 - a. [Redacted]
2. Have you ever visited an Open Space Authority preserve?
 - a. Unsure
3. If yes, which one(s)?
 - a. Unsure
4. Which Open Space Authority preserve is most important to you?
 - a. Coyote Valley Open Space Preserve
5. Have you ever participated in an Open Space Authority event or program?
 - a. Unsure
6. If yes, which one(s)?
 - a. [N/A]
7. Are there Open Space Authority facilities, programs, or activities that you or someone you know cannot participate in or enjoy because of a disability?
 - a. Unsure
8. If your answer above was "Yes," please describe.
 - a. [N/A]
9. Are you able to find information about accessible facilities or programs on the Open Space Authority's website?

- a. Unsure
- 10. Please rank the following Open Space Authority amenities in order of importance to you. Use the up/down arrows to the right on each line to move the amenity type in order of priority or importance, beginning with the most important.
 - a. Trails;
 - b. Benches and other seating areas;
 - c. Restrooms;
 - d. Cultural and historic resources;
 - e. Interpretive/educational features (e.g. signage);
 - f. Picnic areas;
 - g. Parking;
 - h. Shade structures;
 - i. Other;
- 11. If you answered "Other" above, please describe.
 - a. [N/A]
- 12. How would you like to see the Open Space Authority exceed minimum accessibility standards?
 - a. [N/A]
- 13. Is there anything else you would like to share?
 - a. I'm embarrassed that I don't know these open spaces. I'll go see them. Advertise more?

Survey Response #9 [Translated from Spanish]

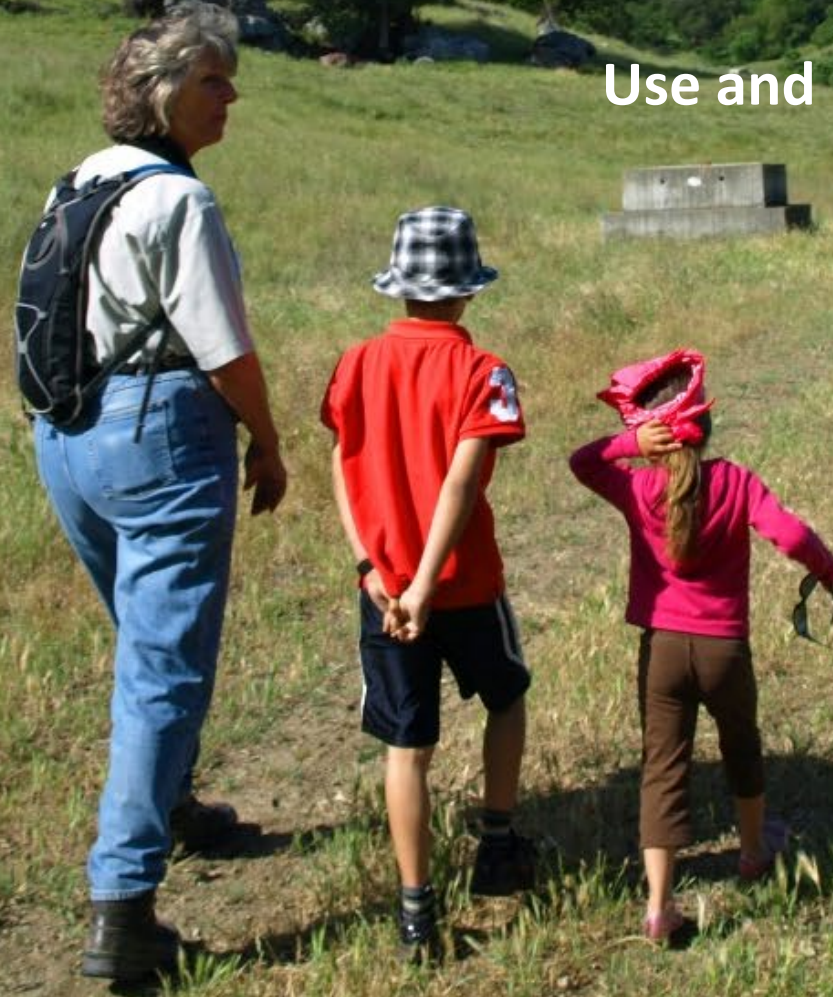
- 1. If you would like to share information about yourself, including your name, contact information, or organization with the Open Space Authority, please provide here:
 - a. [Redacted]
- 2. Have you ever visited an Open Space Authority preserve?
 - a. Yes
- 3. If yes, which one(s)?
 - a. Coyote Valley Open Space Preserve
- 4. Which Open Space Authority preserve is most important to you?
 - a. Coyote Valley Open Space Preserve
- 5. Have you ever participated in an Open Space Authority event or program?
 - a. No
- 6. If yes, which one(s)?
 - a. [N/A]
- 7. Are there Open Space Authority facilities, programs, or activities that you or someone you know cannot participate in or enjoy because of a disability?
 - a. No

8. If your answer above was "Yes," please describe.
 - a. [N/A]
9. Are you able to find information about accessible facilities or programs on the Open Space Authority's website?
 - a. No
10. Please rank the following Open Space Authority amenities in order of importance to you. Use the up/down arrows to the right on each line to move the amenity type in order of priority or importance, beginning with the most important.
 - a. Shade structures;
 - b. Benches and other seating areas;
 - c. Restrooms;
 - d. Trails;
 - e. Picnic areas;
 - f. Parking;
 - g. Cultural and historic resources;
 - h. Interpretive/educational features (e.g. signage);
 - i. Other
11. If you answered "Other" above, please describe.
 - a. [N/A]
12. How would you like to see the Open Space Authority exceed minimum accessibility standards?
 - a. It would be nice.
13. Is there anything else you would like to share?
 - a. We need more walking areas with benches and shade.

Americans with Disabilities Act (ADA) Self-Evaluation and Transition Plan

Use and Management Committee Meeting

July 28, 2022





Justice
Equity
Diversity
Inclusion
**Access &
Accessibility**



Disability Statistics

American Community Survey (2014)

- **27.2%** of the population (85.3 million people) have a disability
- **17.6%** of the population (55.2 million people) have a severe disability
- People 75 years and older are 5x as likely to have a disability as people 18-24 years old



Applicable Rules and Guidelines for Accessibility

- Americans with Disabilities Act of (1990)
- ADA Standards for Accessible Design (2010)
- U.S. Access Board Guidelines for Outdoor Accessible Areas (2014)
- California Building Code (2019)



Americans with Disabilities Act

The Americans with Disabilities Act (ADA) is a civil rights law that mandates equal opportunities for individuals with disabilities.



ADA Title II and Section 504 Requirements

- Public-serving programs, activities and services, and communications
- Self-Evaluation
- ADA Transition Plan
- ADA Coordinator



What are the Authority's current actions toward Accessibility?

- Programming
- Partnerships
- Communications
- Preserves – New and Existing



ADA Transition Plan Goals

- Identify accessibility barriers
- Inventory in GIS
- Implementation plan for addressing barriers and improving accessibility
- Build relationships with accessibility advocates
- Involve the public in the planning process
- Increase Staff awareness and knowledge



Interdepartmental Project Team

- Field Operations
- Educational Programs
- Public Affairs
- Administrative Operations
- Planning



Process

1. Assessments
 - a. Staff Questionnaire
 - b. Facilities
 - c. Programs and Services
 - d. Communications and Webpage
2. Draft Transition Plan
 - a. Self-Evaluation Draft Report
 - b. Barrier Removal Implementation Plan
3. Final Transition Plan



Public Engagement

- Project webpage
- Accessibility advocates and stakeholder outreach
- 3+ public meetings or workshops (virtual and in-person)
- Survey
- Board, CAC, and U+M engagement



Project Schedule

Spring 2022

- Project Kick-off

Fall 2022

- Public Meeting #1
- Facilities, Programs and Services, and Communications Assessments

Winter 2022 - 2023

- Public Meeting #2
- Self-Evaluation Report

Spring 2023

- Public Meeting #3
- Draft ADA Transition Plan
- Final ADA Transition Plan



ADA Transition Plan Outcomes and Impact

- Applicable regulations and guidelines summarized in one place.
- Understand current barriers and costs of barrier removal.
- Prioritize barrier removal projects with input from the public and staff.
- Tool to inform future work plans and capacity planning.



Questions and Discussion

ADA Transition Plan

Citizens' Advisory Committee

March 27, 2023





Tonight's Topics

- ADA Transition Plan Overview
- Public Engagement
- Barrier Removal Prioritization Criteria



Justice
Equity
Diversity
Inclusion
**Access &
Accessibility**



Disability Statistics

American Community Survey (2014)

- **27.2%** of the population (85.3 million people) have a disability
- **17.6%** of the population (55.2 million people) have a severe disability
- People 75 years and older are 5x as likely to have a disability as people 18-24 years old



Americans with Disabilities Act

The Americans with Disabilities Act (ADA) is a civil rights law that mandates equal opportunities for individuals with disabilities.



ADA Title II and Section 504 Requirements

- Public-serving programs, activities and services, and communications
- Self-Evaluation and Facilities Assessments
- ADA Transition Plan
- ADA Coordinator



What are the Authority's current actions toward Accessibility?

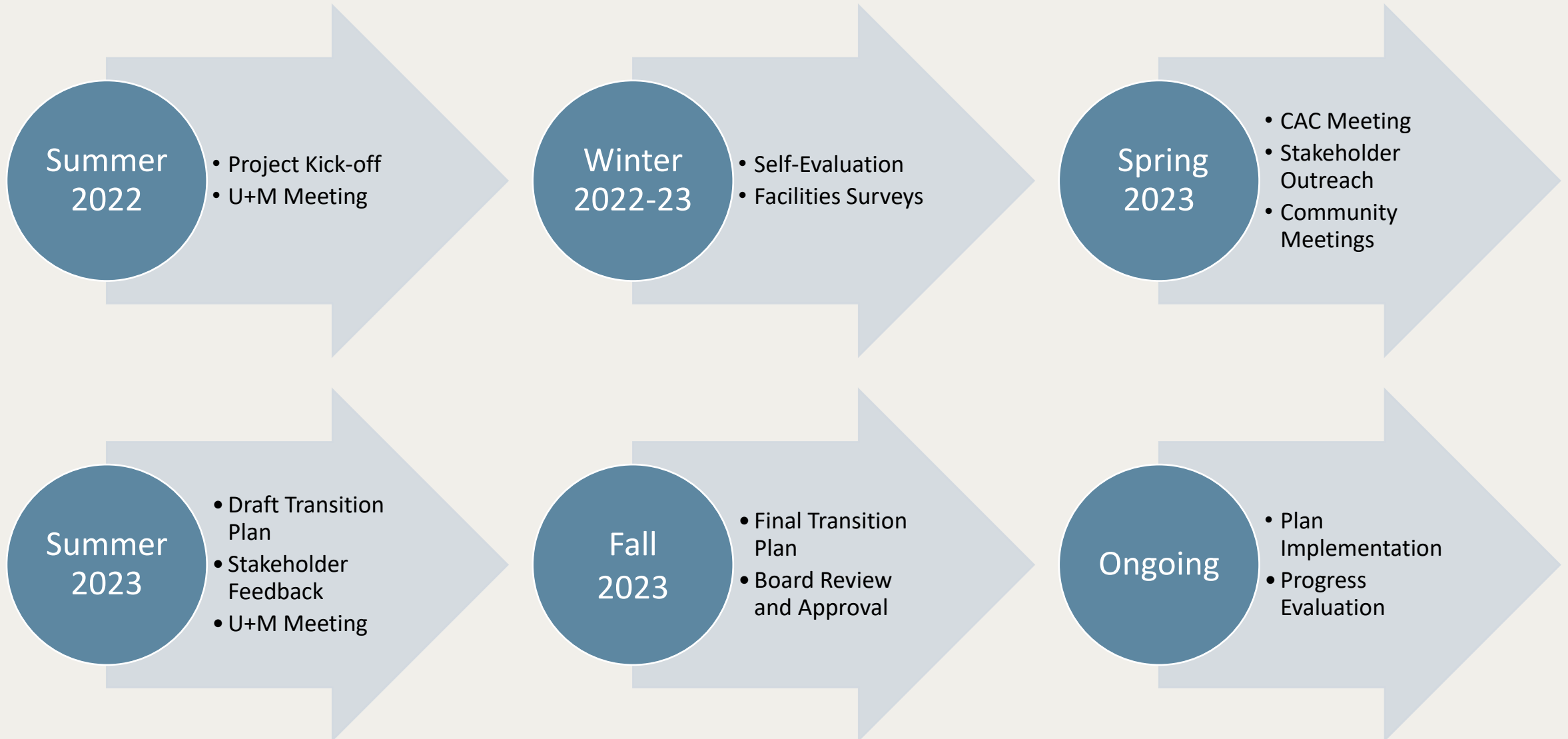
- Programming
- Partnerships
- Communications
- Preserves – New and Existing



ADA Transition Plan Contents

- Introduction and Process Overview
- Results of Assessments
 - Self-Evaluation Questionnaire
 - Facilities Surveys
- Recommendations for Improvement
 - Programs, Services, and Communications
- Barrier Removal Implementation Plan
 - Prioritization Criteria
- Grievance Procedure
- Responsible Staff

ADA Transition Plan Timeline





Public Engagement

- Project webpage
- Accessibility advocates and stakeholder outreach
- Community meetings or workshops (virtual and in-person)
- Asking questions, listen to feedback (survey, focused interviews)
- CAC, U+M, and Board engagement



Prioritization Criteria

- Safety
- Geographic Distribution
- Usage Levels
- Public Feedback and Requests
- Project Readiness



Questions and Discussion



30 YEARS

OPEN SPACE AUTHORITY
SANTA CLARA VALLEY

Accessibility in Open Space

Access and Functional Needs

Silicon Valley Independent Living Center

July 27, 2023

Jennifer Hooper



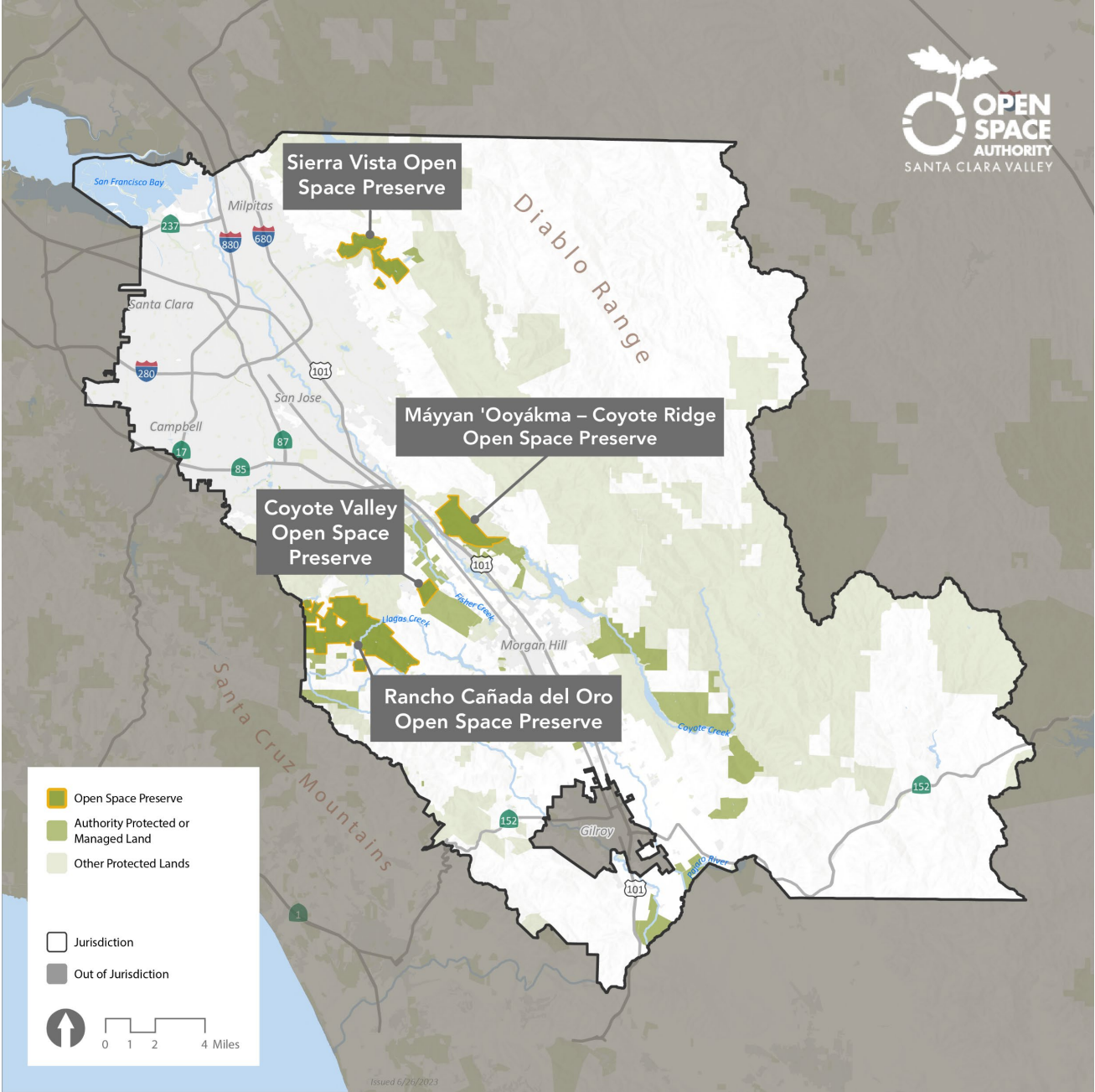


Today's Agenda

- Introduction
- ADA Self-Evaluation and Transition Plan Overview
- Early Takeaways

Mission

The Santa Clara Valley Open Space Authority conserves the natural environment, supports agriculture, and connects people to nature by protecting open spaces, natural areas, and working farms and ranches for future generations.





About the Open Space Authority:

- Own and manage 30,000 acres
- 3 open space preserves (soon 4!)
- 20+ miles of trails for hiking, biking, and equestrian use
- Educational and volunteer programming



Justice
Equity
Diversity
Inclusion
Access &
Accessibility



What are the Authority's current actions toward Accessibility?

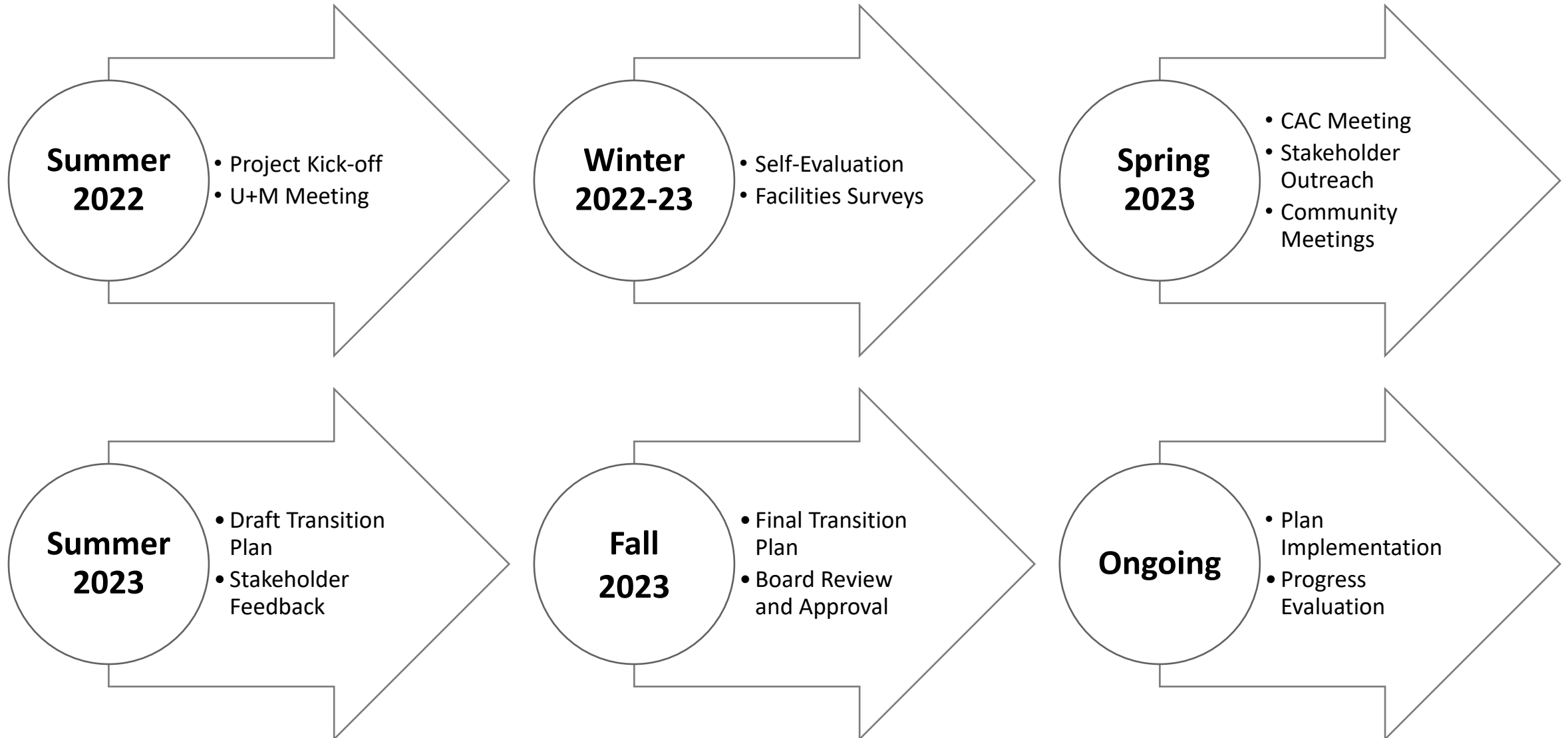
- Programming
- Partnerships
- Communications
- Preserves – New and Existing



Draft ADA Self-Evaluation and Transition Plan

- Results of Assessments
 - Self-Evaluation Questionnaire
 - Facilities Surveys
- Recommendations for Improvement
 - Programs, Services, and Communications
- Barrier Removal Implementation Plan
 - Prioritization Criteria
- Grievance Procedure
- Responsible Staff

ADA Transition Plan Timeline





Public Engagement

- Project webpage
- Accessibility advocates and stakeholder outreach
- Community events and meetings
- Asking questions, listen to feedback (survey, focused interviews)
- Committee and Board engagement



Early Takeaways

- Transportation to/from preserves
- Availability of information on website
- Availability of information onsite
- Adaptive equipment
- Exceed minimum dimensions/quantities
- Outreach and communication
- Partnerships
- Representation
- Staff training



Thank You